



# HATCHETT CREEK 190 ACRES

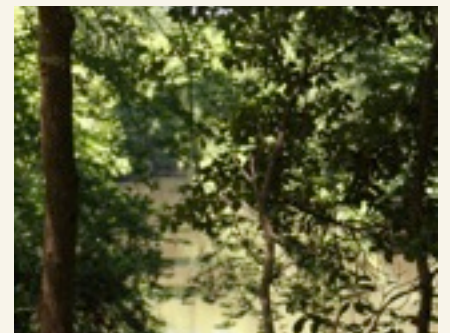
**Coosa County**

**\$674,000**

- ▶ 190 +/- Acre Prime Recreational Property - Access from Hwy 280
- ▶ Over 3,000 Feet of Frontage on Hatchett Creek
- ▶ One Hour from Birmingham - 45 Minutes from Auburn - 20 Minutes from Lake Martin
- ▶ Beautiful Ridge Views
- ▶ Large Green Fields with Shooting Houses
- ▶ Mature Hardwood Bottoms & Loblolly Pine Timber
- ▶ Spectacular Homesite on Hatchett Creek

The combination of larger acreage, frontage on Hatchett Creek, easy access directly from Hwy 280, mature timber, and proximity to Birmingham, Auburn & Lake Martin gives this tract a unique appeal for a year-round family getaway. Call today for more information or to schedule a tour.

**Contact: Chas Pell**  
[cpell@blackridgeland.com](mailto:cpell@blackridgeland.com)  
 205.919.6504 (cell)



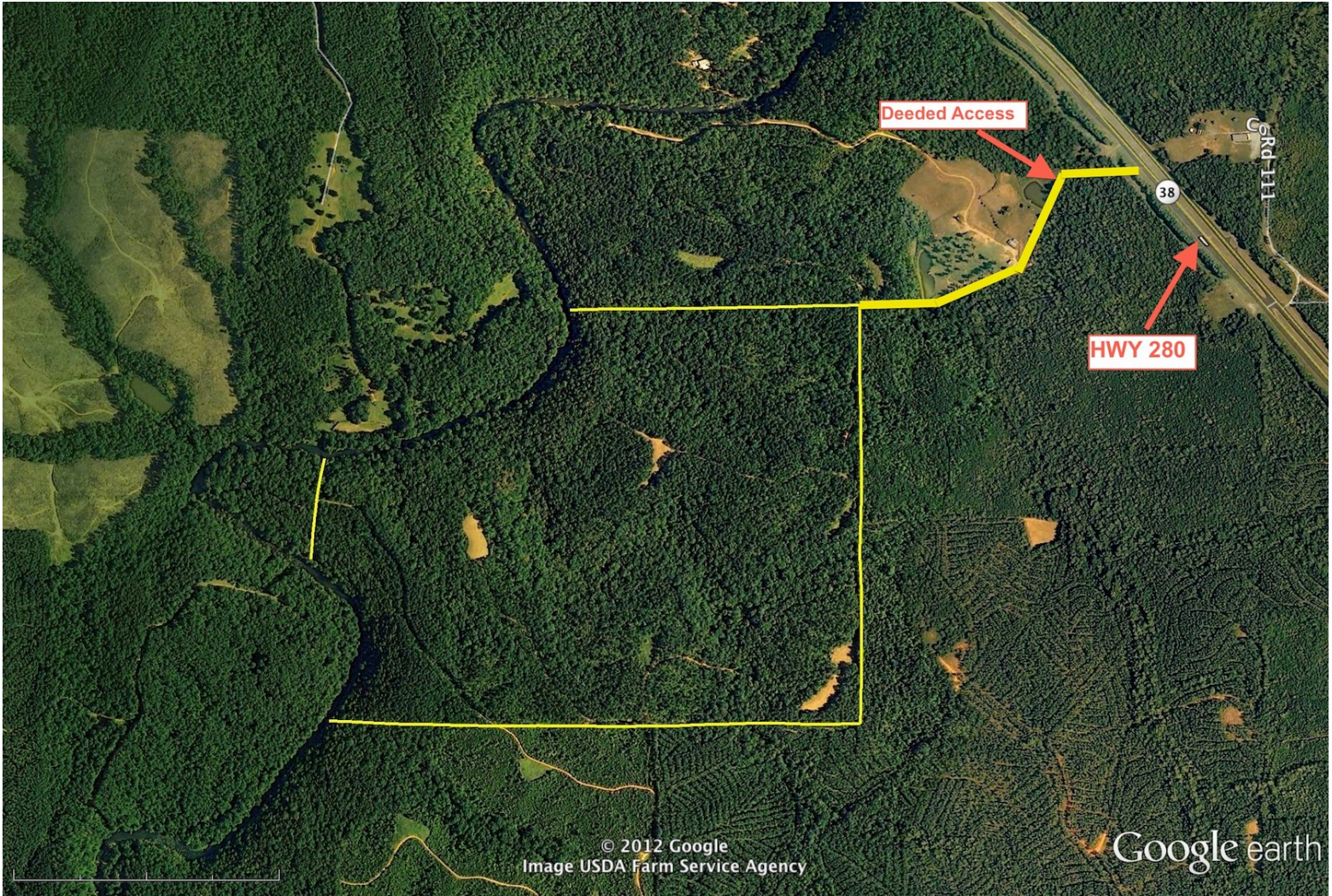
See Reverse for Maps



TEL 205/322/2647  
 FAX 205/322/8563  
 EML info@blackridgeland.com

[www.BLACKRIDGELAND.com](http://www.BLACKRIDGELAND.com)





SCALE OF MILES 1/2  
 10 1320 1980 2640 SCALE OF FEET 5280

TWP.24N-RNG.19E - SOUTHEAST  
 COOSA COUNTY, ALABAMA (LOCATOR 2)

