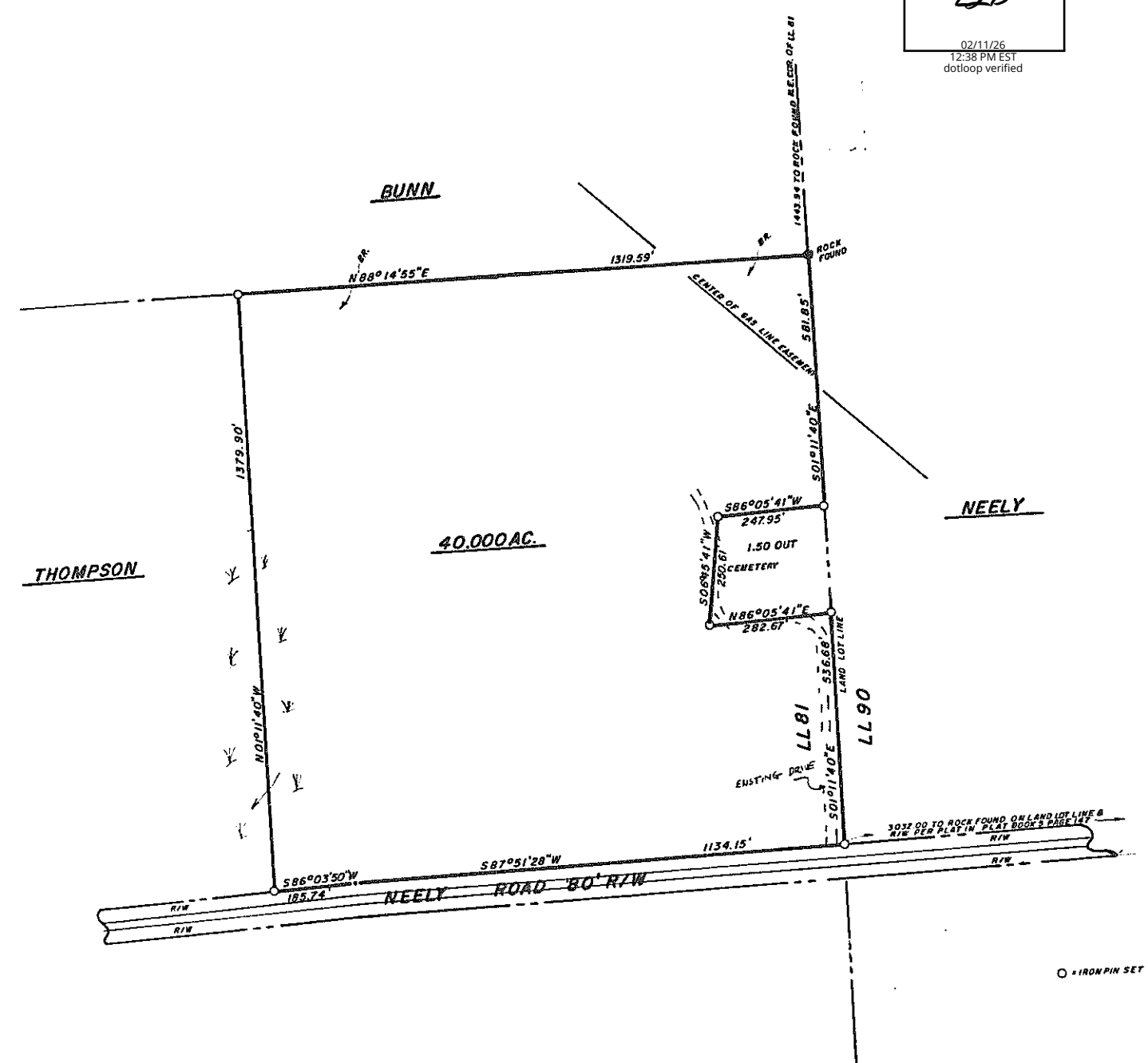


EXHIBIT "A"

ELB
02/11/26
12:38 PM EST
dotloop verified



IN MY OPINION, THIS IS A TRUE AND CORRECT REPRESENTATION OF THE PLATTED PROPERTY AND HAS BEEN PREPARED IN CONFORMITY WITH THE STANDARDS AND REQUIREMENTS OF LAW

GEORGIA, COWETA COUNTY, CLERK SUPERIOR COURT
FILED IN OFFICE, THIS 9 DAY OF July
1987 AT 1:35 P.M. RECORDED IN BOOK 43
PAGE 31 THIS 9 DAY OF July 1987
Deborah Elson
CLERK

SURVEY FOR	
ELNORA LANGFORD BATTLE	
SCALE 1"=200'	APPROVED BY:
DATE 5/16/87	DRAWN BY TOMMY
LAND LOT 81 LAND DIST. 1 COWETA COUNTY, GEORGIA	
SURVEY BY John R. Christopher	
DRAWING NUMBER 87037	

