

# FOR SALE - COURTESY COURT MOTEL

2240 Gray Highway  
Macon, GA 31211



Summary

Area Info

Photos

Aerial

Site Map



**SALE PRICE: \$1,100,000**

## CONTACT

**Joseph Bowen**  
478-746-9421 Office  
478-538-6026 Cell  
[jbowen@fickling.com](mailto:jbowen@fickling.com)



577 Mulberry St, Suite 1100  
Macon, GA 31201  
478.746.9421 Office  
<https://commercial.fickling.com>

This information is from resources deemed to be reliable and is subject to change without notice. No warranties or guarantees for accuracy are made by Fickling and Company.

FOR SALE - COURTESY COURT MOTEL  
2240 Gray Highway  
Macon, GA 31211



Summary    Area Info    Photos    Aerial    Site Map

PROPERTY INFORMATION

BUILDING

**Property Address:** 2240 Gray Highway  
Macon, GA 31211

**County:** Bibb

**Total Size:** 7,500± SF

**Frontage:** 401'± (Motel Frontage)  
1,100'± (Property Frontage)

**Year Built:** 1952

**Utilities:** All Available

**Parking:** 40± parking spaces

**Traffic Count:** Gray Highway - 12,448 VPD

SITE


**Site Size:** 10.79± Acres

**Parcel ID:** S053-0011

**Zoning:** C-4

Demographics 2025	1 Miles	5 Miles	10 Miles
Population	1,662	57,926	154,575
Avg HH Income	\$63,315	\$70,169	\$82,788
Median Age	35.1	36.2	36.3

**CONTACT**    **Joseph Bowen**  
478-746-9421 Office  
478-538-6026 Cell  
jbowen@fickling.com

 577 Mulberry St, Suite 1100  
Macon, GA 31201  
478.746.9421 Office  
<https://commercial.fickling.com>

# FOR SALE - COURTESY COURT MOTEL

2240 Gray Highway  
Macon, GA 31211



Summary

Area Info

Photos

Aerial

Site Map

## PROPERTY INFORMATION

### NOTES

Fully Operational, 17-Unit, Motel/Extended Stay, with Ample Parking (40± spots) fronting Gray Highway, in Macon-Bibb County. This property is consistently occupied, with very little vacancy. Over 10 acres of land accompanies this nearly 8,000 sf motel as well. Brand new roof installed in late 2023.

### LOCATION

Conveniently situated in Bibb County, this property is just over two miles from Historic Downtown Macon and all of its attractions and amenities. The location also offers easy access to public transportation and is approximately 2.5± miles from both I-16 and I-75.



### CONTACT

**Joseph Bowen**  
478-746-9421 Office  
478-538-6026 Cell  
jbowen@fickling.com



577 Mulberry St, Suite 1100  
Macon, GA 31201  
478.746.9421 Office  
<https://commercial.fickling.com>



# FOR SALE - COURTESY COURT MOTEL

2240 Gray Highway  
Macon, GA 31211



Summary

Area Info

Photos

Aerial

Site Map



## CONTACT

**Joseph Bowen**  
478-746-9421 Office  
478-538-6026 Cell  
[jbowen@fickling.com](mailto:jbowen@fickling.com)



577 Mulberry St, Suite 1100  
Macon, GA 31201  
478.746.9421 Office  
<https://commercial.fickling.com>



# FOR SALE - COURTESY COURT MOTEL

2240 Gray Highway  
Macon, GA 31211



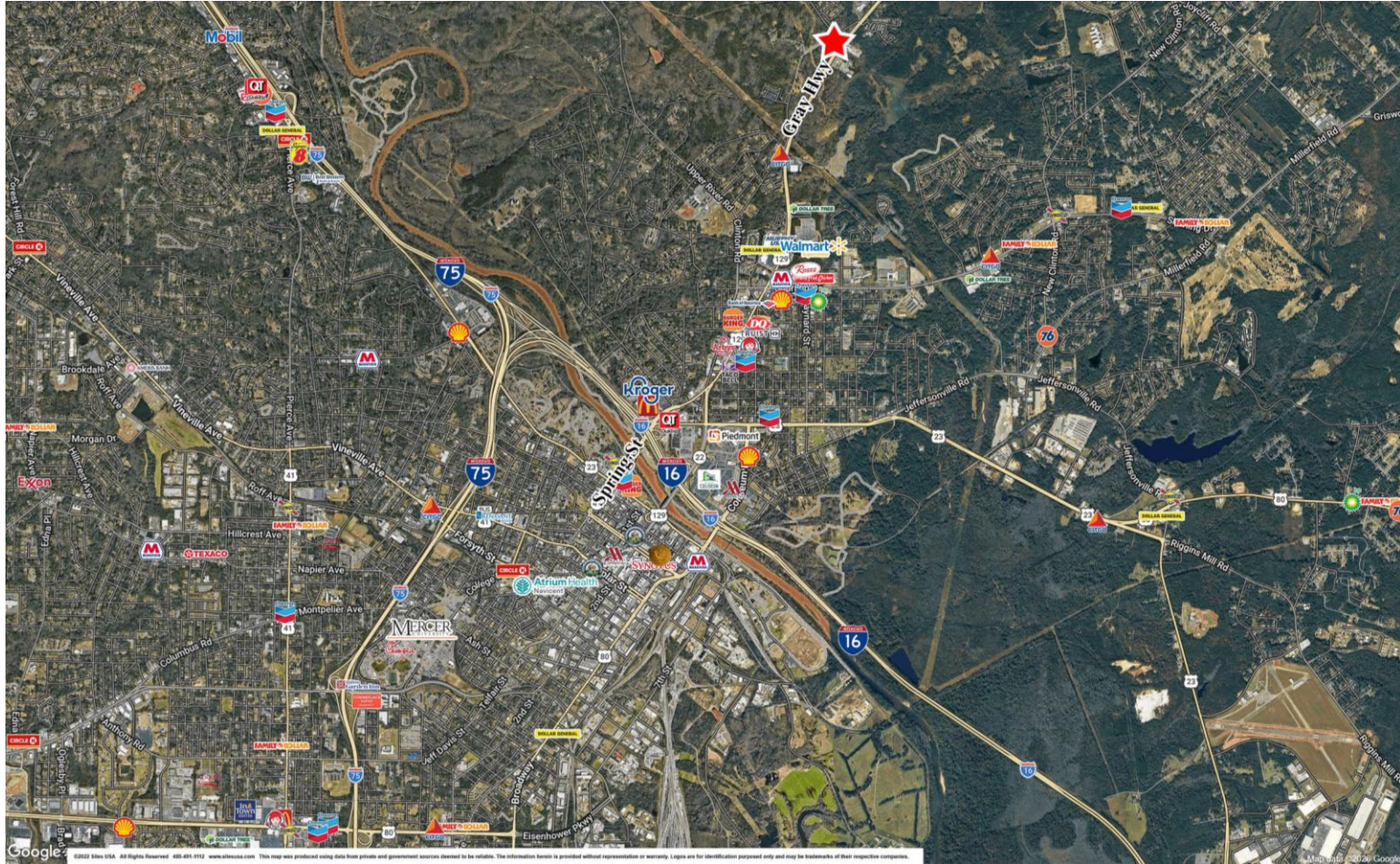
Summary

Area Info

Photos

Aerial

Site Map



## CONTACT

**Joseph Bowen**  
478-746-9421 Office  
478-538-6026 Cell  
[jbowen@fickling.com](mailto:jbowen@fickling.com)



577 Mulberry St, Suite 1100  
Macon, GA 31201  
478.746.9421 Office  
<https://commercial.fickling.com>



# FOR SALE - COURTESY COURT MOTEL

2240 Gray Highway  
Macon, GA 31211



Summary

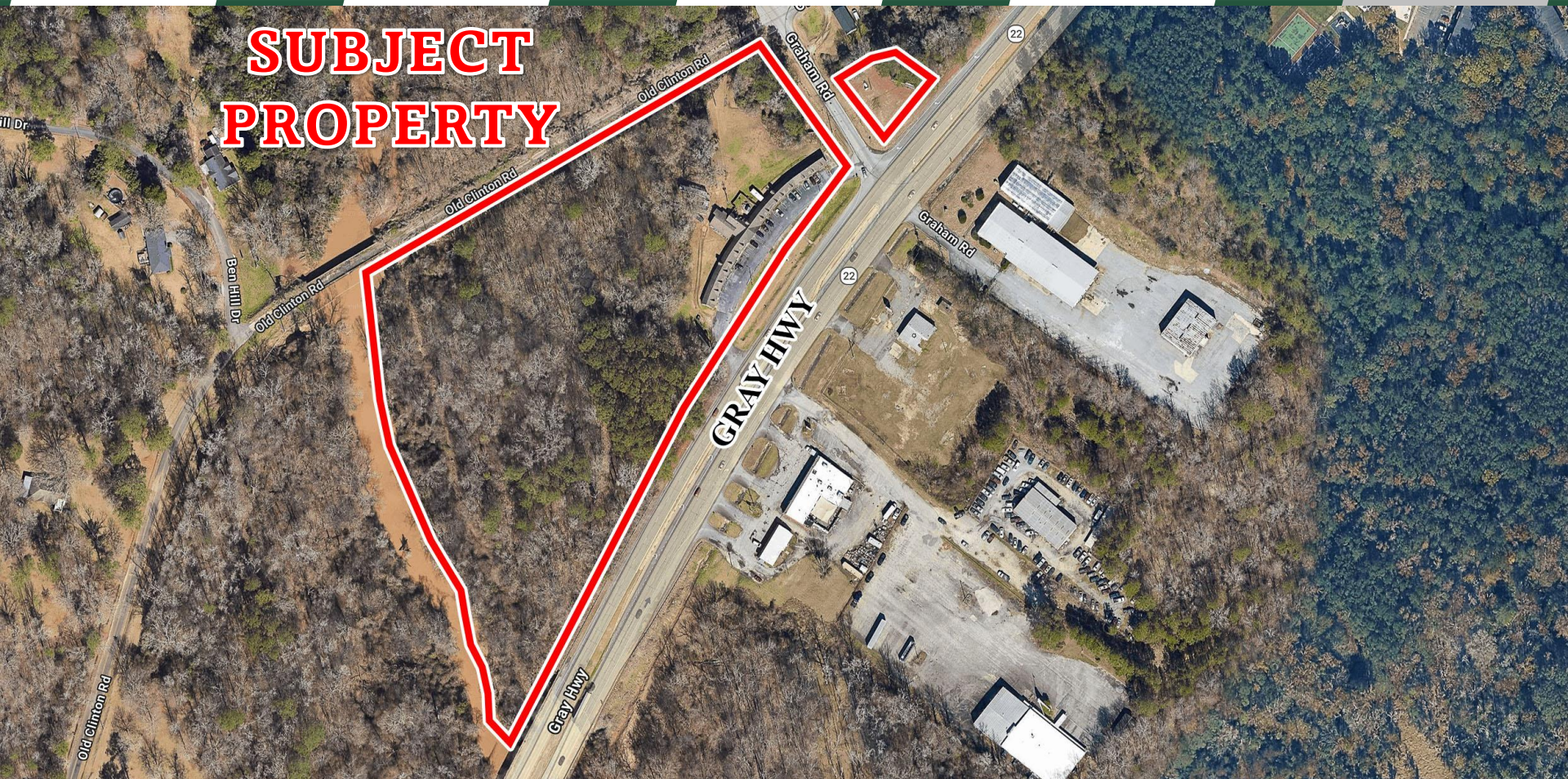
Area Info

Photos

Aerial

Site Map

**SUBJECT  
PROPERTY**



## CONTACT

**Joseph Bowen**  
478-746-9421 Office  
478-538-6026 Cell  
[jbowen@fickling.com](mailto:jbowen@fickling.com)



577 Mulberry St, Suite 1100  
Macon, GA 31201  
478.746.9421 Office  
<https://commercial.fickling.com>