



SMALLTOWN

**HUNTING PROPERTIES
& REAL ESTATESM**

100± ACRES
JONES COUNTY, MS
\$435,000



OFFICE (769) 760-0005 | WWW.SMALLTOWNPROPERTIES.COM

THE JONES 100

PROPERTY PROFILE

LOCATION:

- Timothy Road
Ellisville, MS 39437
- Jones County
- 12± Miles E of Collins
- 15± Miles NW of Ellisville
- 22± Miles W of Laurel

COORDINATES:

- 31.66, -89.39405

TAX INFORMATION:

- Parcel # 099-15-00-010.00
- \$314.40 (2025)

PROPERTY USE:

- Hunting
- Recreational
- Investment
- Development

PROPERTY INFORMATION:

- 100± Total Acres
- Rolling Topography
- Internal Road System
- Road Frontage
- Pine Timber
- Deer & Turkey
- Food Plots



SMALLTOWN
HUNTING PROPERTIES
& REAL ESTATESM

DEWAYNE ATKINSON

LAND SPECIALIST

C: 601-832-3075

O: 769-760-0005

dewayne@smalltownproperties.com

2121 5th St., Ste 206 - Meridian, MS 39301

smalltownproperties.com

Information is believed to be accurate but not guaranteed.

WELCOME TO THE JONES 100

WELCOME TO THE JONES 100, LOCATED BETWEEN ELLISVILLE AND COLLINS, MISSISSIPPI! This 100± acre tract in Jones County offers a strong blend of timber value, access, and long-term development potential. The property was recently thinned and is stocked with a well-managed stand of 18 to 20 year-old pine timber, giving buyers both immediate and future income opportunities.

An excellent internal road system provides easy access throughout the entire tract, and the property features paved road frontage along its boundary, making it suitable for residential development, poultry farm construction, or a long-term investment hold.



SMALLTOWN
HUNTING PROPERTIES
& REAL ESTATESM

DEWAYNE ATKINSON
LAND SPECIALIST

C: 601-832-3075

O: 769-760-0005

dewayne@smalltownproperties.com

2121 5th St., Ste 206 - Meridian, MS 39301

smalltownproperties.com

Information is believed to be accurate but not guaranteed.

MORE ABOUT THE JONES 100

The land features a gently rolling hill topography with multiple high-ground building sites and good natural drainage. Wildlife sign is consistent across the property, with heavy deer and turkey activity, making it a strong recreational option for hunting and year-round enjoyment.

Whether you are looking for a productive timber investment, a poultry farm site, a development tract, or a versatile recreational property, the Jones 100 checks all the boxes and is positioned well for a wide range of uses.

Contact Dewayne Atkinson today to schedule a private showing and experience #TheSmallTownWay.



SMALLTOWN
HUNTING PROPERTIES
& REAL ESTATESM

DEWAYNE ATKINSON
LAND SPECIALIST

C: 601-832-3075

O: 769-760-0005

dewayne@smalltownproperties.com

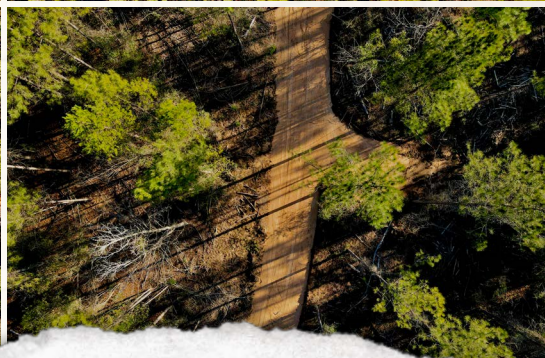
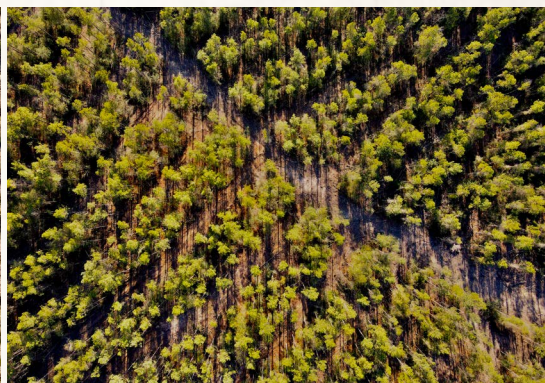
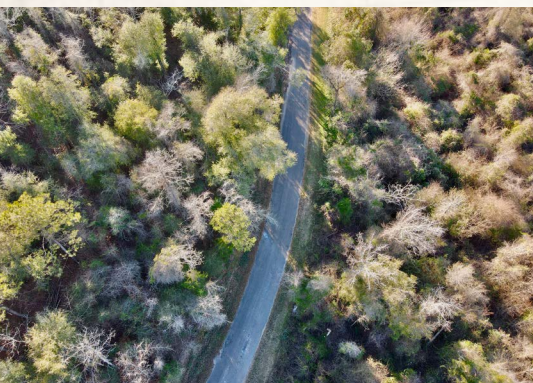
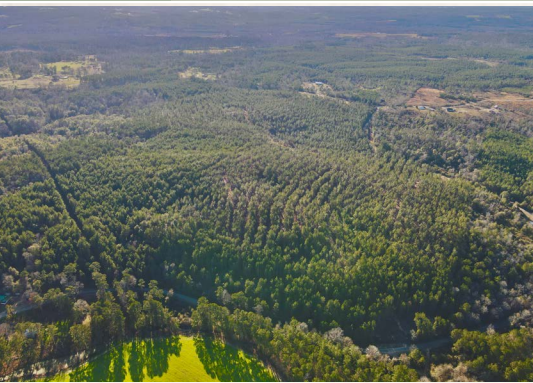
2121 5th St., Ste 206 - Meridian, MS 39301

smalltownproperties.com

Information is believed to be accurate but not guaranteed.

100± ACRES

JONES COUNTY, MISSISSIPPI



SMALLTOWN
HUNTING PROPERTIES
& REAL ESTATESM

DEWAYNE ATKINSON

LAND SPECIALIST

C: 601-832-3075

O: 769-760-0005

dewayne@smalltownproperties.com

2121 5th St., Ste 206 - Meridian, MS 39301

smalltownproperties.com

Information is believed to be accurate but not guaranteed.

100± ACRES JONES COUNTY, MISSISSIPPI



SMALLTOWN
HUNTING PROPERTIES
& REAL ESTATESM

DEWAYNE ATKINSON
LAND SPECIALIST

C: 601-832-3075

O: 769-760-0005

dewayne@smalltownproperties.com

2121 5th St., Ste 206 - Meridian, MS 39301

smalltownproperties.com

Information is believed to be accurate but not guaranteed.

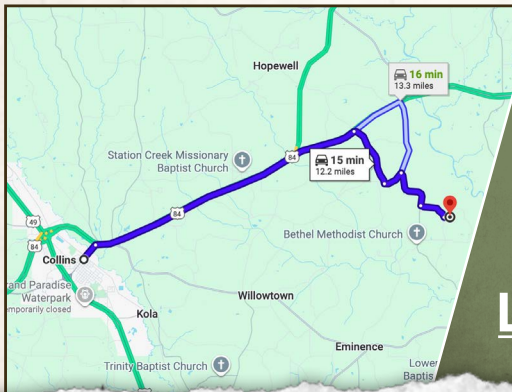
100± ACRES

JONES COUNTY, MISSISSIPPI

land **id.** LINK

Directions From Collins, MS: Travel on US-84 East for 7.4 miles. Turn right onto Magee Road and continue for 1.6 miles. Turn left onto Lead River Church Road, and after 0.6 miles, turn right onto Monroe Road. Travel for 1.2 miles. Turn left onto Oak Bowery Road and proceed for 0.7 miles. Turn left onto Timothy Road and arrive at your destination.

LINK TO GOOGLE MAP DIRECTIONS



SMALLTOWN
HUNTING PROPERTIES
& REAL ESTATESM

DEWAYNE ATKINSON
LAND SPECIALIST

C: 601-832-3075

O: 769-760-0005

dewayne@smalltownproperties.com

2121 5th St., Ste 206 - Meridian, MS 39301

smalltownproperties.com

Information is believed to be accurate but not guaranteed.