



Slade Priest
sladepriest1@gmail.com
Office: (601) 250-0017
Cell: (601) 888-0094
SouthernStatesRealty.com



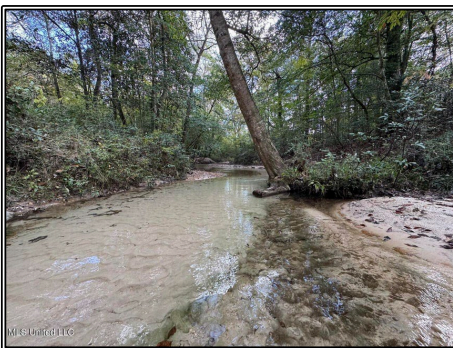
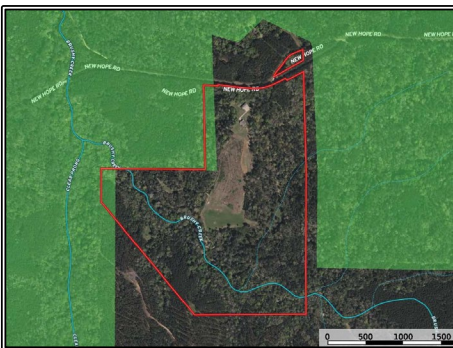
Southern States Realty



Welcome to The Brushy Creek 133, a true outdoorsman's paradise tucked deep in Amite County, Mississippi. This 133-acre retreat is completely surrounded by the Homochitto National Forest, giving you total privacy and direct access to thousands of acres of pristine public land. At its heart sits a beautiful 2,382 sq. ft. camp, featuring 4 bedrooms and 2.5 baths, thoughtfully designed for comfort after long days in the woods. The open living area and spacious kitchen flow perfectly for family gatherings, and the wide porches are made for relaxing evenings, taking in the sounds of the forest. Just steps away, a massive 3,200 sq. ft. shop offers all the space you need for tractors, ATVs, and gear — perfect for managing the property or setting up the ultimate workshop. The land itself is loaded with features every outdoorsman dreams of, including five well-established food plots and an abundant population of deer and turkey. The surrounding National Forest and diverse habitat make this place a magnet for wildlife year-round. But The Brushy Creek 133 isn't just for hunting — it's for making memories. Brushy Creek winds through the property, offering a beautiful, peaceful spot where you can cool off on a hot summer day or let the kids splash and play in the crystal-clear water. It's the kind of natural beauty that makes this place feel alive — a hidden gem where outdoor adventure meets simple, timeless fun. Whether you're looking for a family hunting retreat, a weekend getaway, or a forever home in the woods, The Brushy Creek 133 has it all: seclusion, recreation, and room to roam. Mornings filled with gobbles, evenings by the campfire, and days spent on the creek — this is Mississippi outdoor living at its finest.

5098 New Hope Road, Gloster, MS

31.247381, -90.946374 GPS



\$1,250,000

133± Acres
MLS #4131219



#HUNTINGLANDMAN