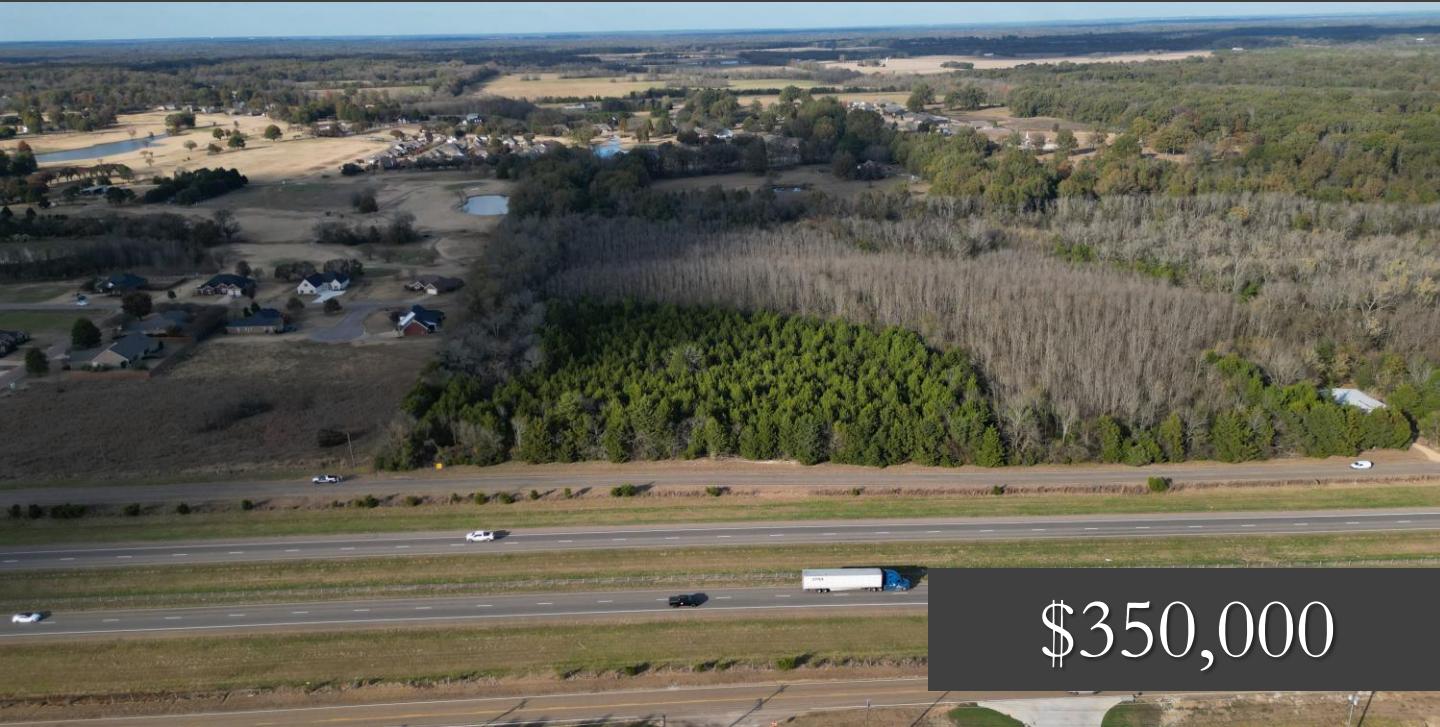


Prime Commercial & Development Potential 10± Acres in Lowndes County, MS



\$350,000

Are you looking for a prime piece of land that has many uses? This 10± acres in Lowndes County, MS is perfect. It features over 500ft of road frontage on North Frontage Rd in Columbus, MS and has access to all utilities. This property is just minutes from both Starkville and Columbus, MS. It lies near Elm Lake Golf Course and many other businesses all along Highway 82 and the Industrial park. Contact Tom Wiseman for more details or to schedule a showing.



**TOM
WISEMAN**

ASSOCIATE BROKER

Office: 662.268.6333

Cell: 662.317.0467

TWiseman@TomSmithLand.com



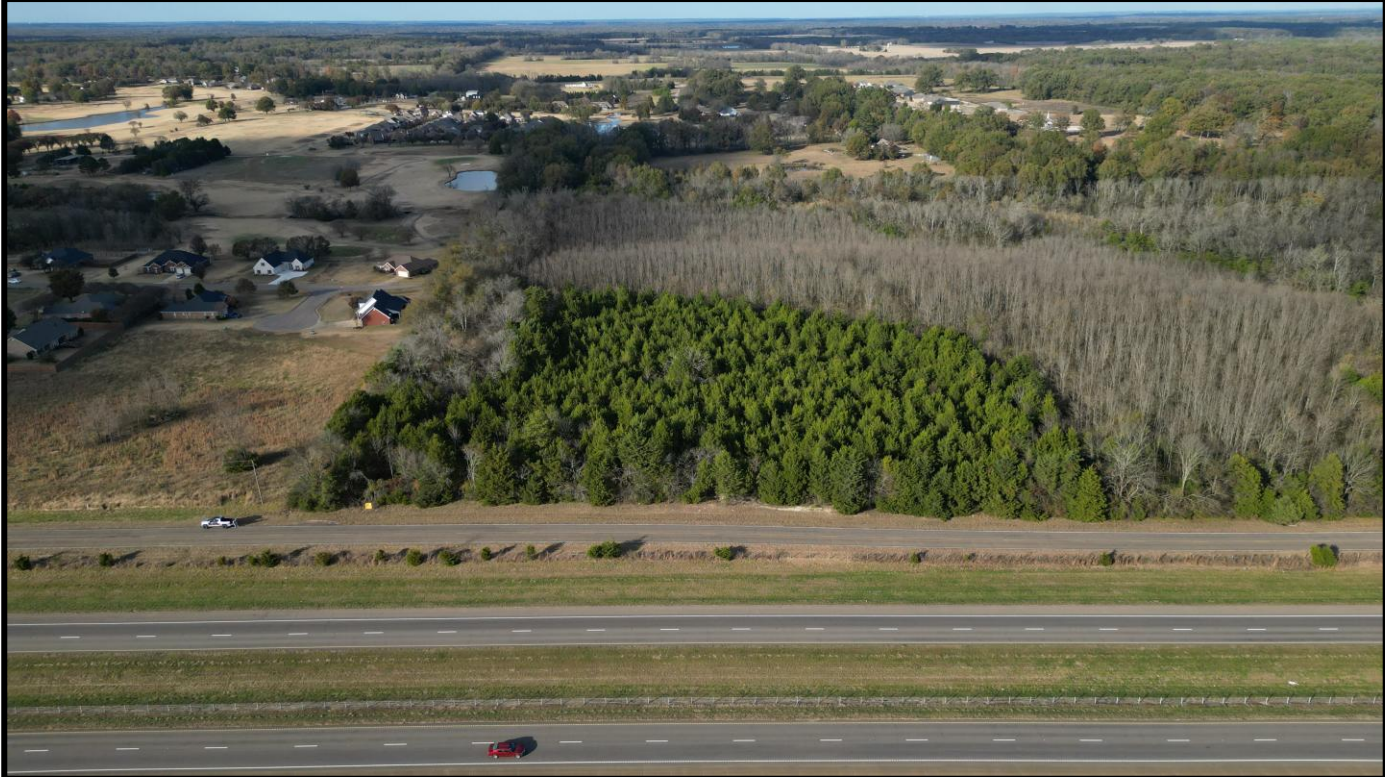
Expect More. Get More.

A Real Estate Expert You Can Trust

TomSmithLandandHomes.com

Information is believed to be accurate but not guaranteed.





A Real Estate Expert You Can Trust!

TOM WISEMAN

ASSOCIATE BROKER

O: 662.268.6333 C: 662.317.0467

TWiseman@TomSmithLand.com

TomSmithLandandHomes.com



Expect More. Get More.



Information is believed to be accurate but not guaranteed.

Aerial Map |



Link



A Real Estate Expert
You Can Trust!

TOM WISEMAN

ASSOCIATE BROKER

O: 662.268.6333 C: 662.317.0467

TWiseman@TomSmithLand.com

TomSmithLandandHomes.com

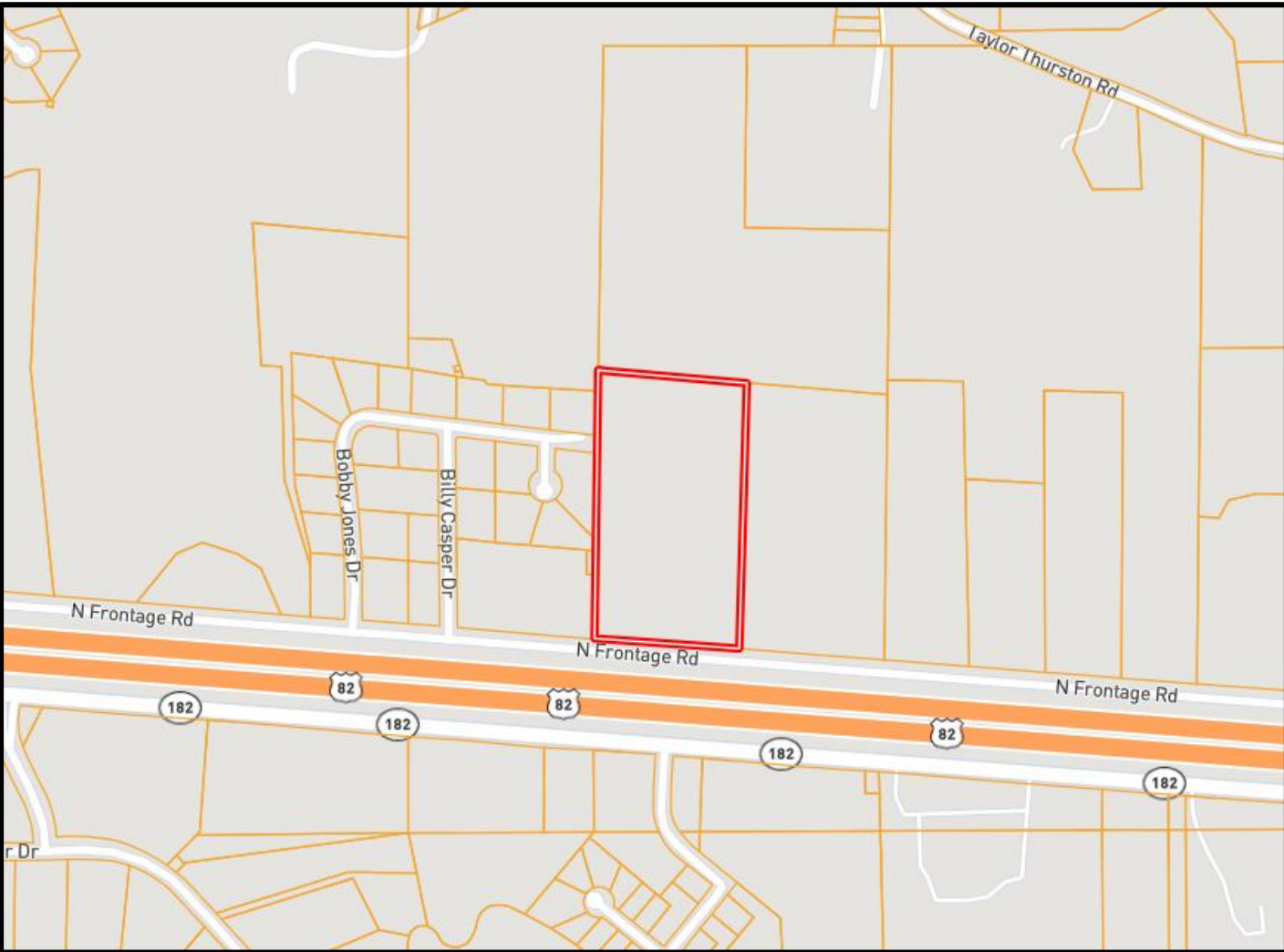


Expect More. Get More.



Information is believed to be accurate but not guaranteed.

Ownership Map



A Real Estate Expert
You Can Trust!

TOM WISEMAN

ASSOCIATE BROKER

O: 662.268.6333 C: 662.317.0467

TWiseman@TomSmithLand.com

TomSmithLandandHomes.com



Expect More. Get More.



Information is believed to be accurate but not guaranteed.

FEMA Map



A Real Estate Expert
You Can Trust!

TOM WISEMAN

ASSOCIATE BROKER

O: 662.268.6333 C: 662.317.0467

TWiseman@TomSmithLand.com

TomSmithLandandHomes.com



Expect More. Get More.

Information is believed to be accurate but not guaranteed.





Directions from U.S 82 in Mathiston, MS: Directions from Starkville: Turn right onto MS-182 E for 3 miles. Then take the US-82 exit ramp towards Columbus for .3 miles. Merge onto MS-12 E/ US-82 E for 10 miles. Then take the MS-791 exit ramp towards Golden Triangle Regional Airport for 3 miles. Turn left onto MS-791 for .3 miles. Turn right onto N Frontage Rd for 2.4 miles and the property will be on your left.

A Real Estate Expert
You Can Trust!

TOM WISEMAN

ASSOCIATE BROKER

O: 662.268.6333 C: 662.317.0467

TWiseman@TomSmithLand.com

TomSmithLandandHomes.com



Expect More. Get More.

