

Trophy Hunting Paradise

348± Acres in Madison County, MS

\$1,354,000



[Click Here for the Property Video](#)



**TOM
SMITH**

ALC®, BROKER

Office: 601.898.2772

Cell: 601.454.9397

Tom@TomSmithLand.com



Expect More. Get More.

Call The Land Man Today!

TomSmithLandandHomes.com

Information is believed to be accurate but not guaranteed.



Madison County Mississippi's Finest



Hunting & Wildlife Features

- Trophy whitetail deer population
- Strong turkey population
- 15 food plots
- 10 shooting houses
- Several ladder stands
- Year-round supplemental feeding program

Lodging & Site Potential

- Multiple lodge and cabin sites to choose from
- Scenic setting with creek access

Land Highlights

- 250± acres of hardwoods
- 75± acres of 18-25 year old pine/hardwood mix
- Two creeks
- Property is surrounded by crop ground & large landowners

Utilities & Access

- Water & power available
- Gas and power lines traversing the property

This property stands among the absolute best in Madison County for producing record bucks year after year. With exceptional cover, outstanding food production, a landscape surrounded by crop ground and large neighboring landowners that have managed and protected their herd for decades, it offers the ideal setting for serious whitetail hunting.

The food plots are not only expansive but also meticulously maintained to maximize both wildlife attraction and hunting enjoyment. A well-developed internal road system provides easy access to all plots and stand locations—no matter the wind direction or terrain—making it a hunter's dream.

Conveniently located, the property is within 30 minutes of virtually any point in the metro area, offering both seclusion and accessibility. Multiple prime sites are available for a lodge or cabin, giving you the perfect opportunity to build your family's private retreat.

This property is simply one of the finest whitetail tracts that I have had the pleasure to see.

Showings by appointment only. Buyers must be pre-qualified.

The Land & Homes Expert
You Can Trust!

TOM SMITH

ALC®, BROKER

O: 601.898.2772 C: 601.454.9397

Tom@TomSmithLand.com

TomSmithLandandHomes.com



Information is believed to be accurate but not guaranteed.





The Land & Homes Expert *You Can Trust!*

TOM SMITH

ALC®, BROKER

O: 601.898.2772 C: 601.454.9397

Tom@TomSmithLand.com

TomSmithLandandHomes.com



Expect More. Get More.

Information is believed to be accurate but not guaranteed.





The Land & Homes Expert *You Can Trust!*

TOM SMITH

ALC®, BROKER

O: 601.898.2772 C: 601.454.9397

Tom@TomSmithLand.com

TomSmithLandandHomes.com



Expect More. Get More.

Information is believed to be accurate but not guaranteed.





The Land & Homes Expert *You Can Trust!*

TOM SMITH

ALC®, BROKER

O: 601.898.2772 C: 601.454.9397

Tom@TomSmithLand.com

TomSmithLandandHomes.com



Expect More. Get More.



Information is believed to be accurate but not guaranteed.



The Land & Homes Expert *You Can Trust!*

TOM SMITH

ALC®, BROKER

O: 601.898.2772 C: 601.454.9397

Tom@TomSmithLand.com

TomSmithLandandHomes.com



Expect More. Get More.

Information is believed to be accurate but not guaranteed.





The Land & Homes Expert *You Can Trust!*

TOM SMITH

ALC®, BROKER

O: 601.898.2772 C: 601.454.9397

Tom@TomSmithLand.com

TomSmithLandandHomes.com



Expect More. Get More.

Information is believed to be accurate but not guaranteed.





The Land & Homes Expert
You Can Trust!

TOM SMITH

ALC®, BROKER

O: 601.898.2772 C: 601.454.9397

Tom@TomSmithLand.com

TomSmithLandandHomes.com



Expect More. Get More.

Information is believed to be accurate but not guaranteed.





The Land & Homes Expert *You Can Trust!*

TOM SMITH

ALC®, BROKER

O: 601.898.2772 C: 601.454.9397

Tom@TomSmithLand.com

TomSmithLandandHomes.com



Expect More. Get More.

Information is believed to be accurate but not guaranteed.





The Land & Homes Expert *You Can Trust!*

TOM SMITH

ALC®, BROKER

O: 601.898.2772 C: 601.454.9397

Tom@TomSmithLand.com

TomSmithLandandHomes.com



Expect More. Get More.

Information is believed to be accurate but not guaranteed.



This premier property **consistently** produces **record-setting bucks**, thanks to its **exceptional cover**, **well-maintained food plots**, and **ideal location** surrounded by crop ground and legacy-managed herds. A **strategic road system** ensures easy access to multiple stand sites in any wind or terrain—making every hunt both accessible and unforgettable.



The Land & Homes Expert
You Can Trust!

TOM SMITH

ALC®, BROKER

O: 601.898.2772 C: 601.454.9397

Tom@TomSmithLand.com

TomSmithLandandHomes.com

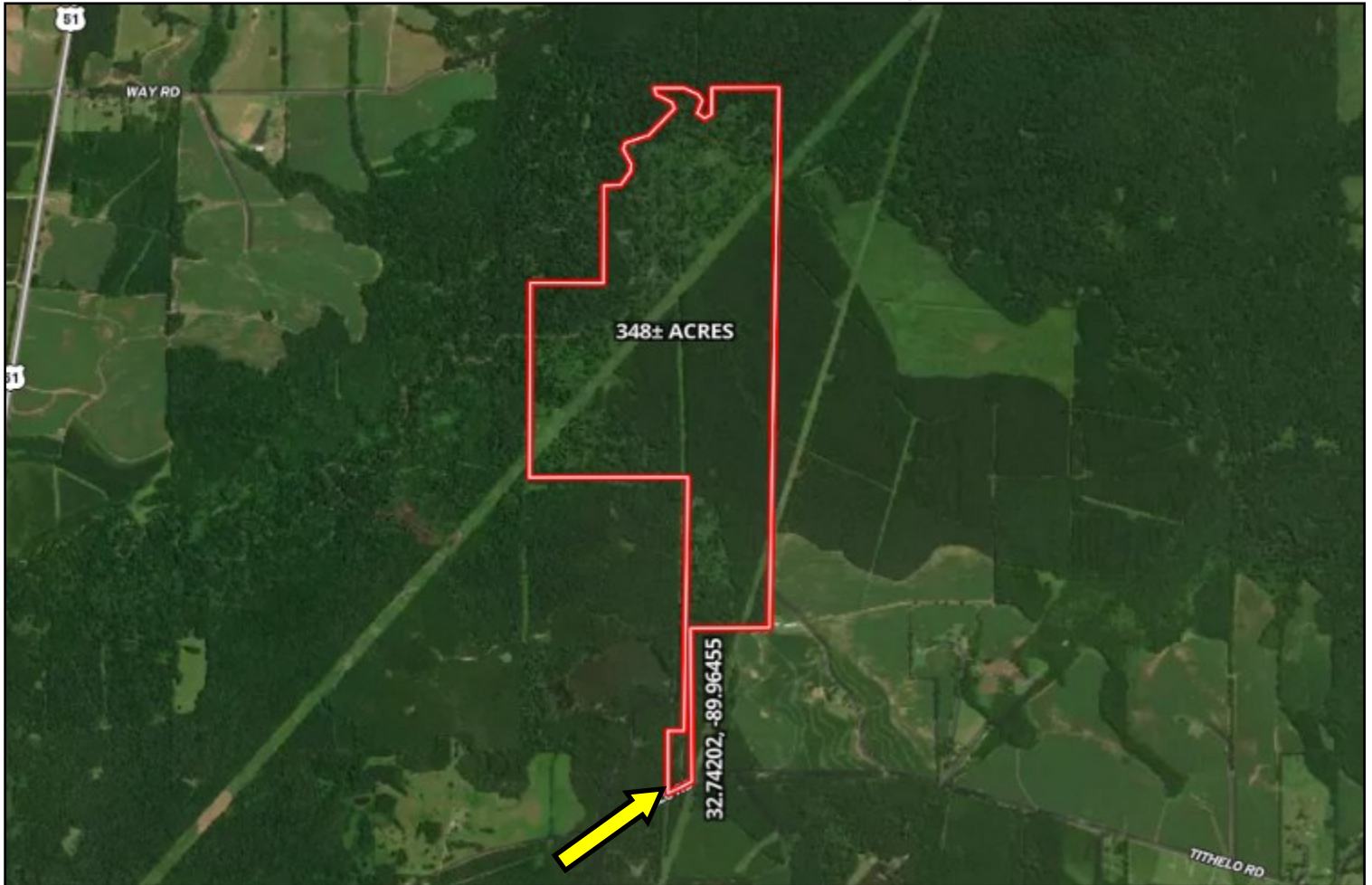


Expect More. Get More.



Information is believed to be accurate but not guaranteed.

Aerial Map



[Click Here for the Landld Interactive Map Link](#)

The Land & Homes Expert
You Can Trust!

TOM SMITH

ALC®, BROKER

O: 601.898.2772 C: 601.454.9397

Tom@TomSmithLand.com

TomSmithLandandHomes.com

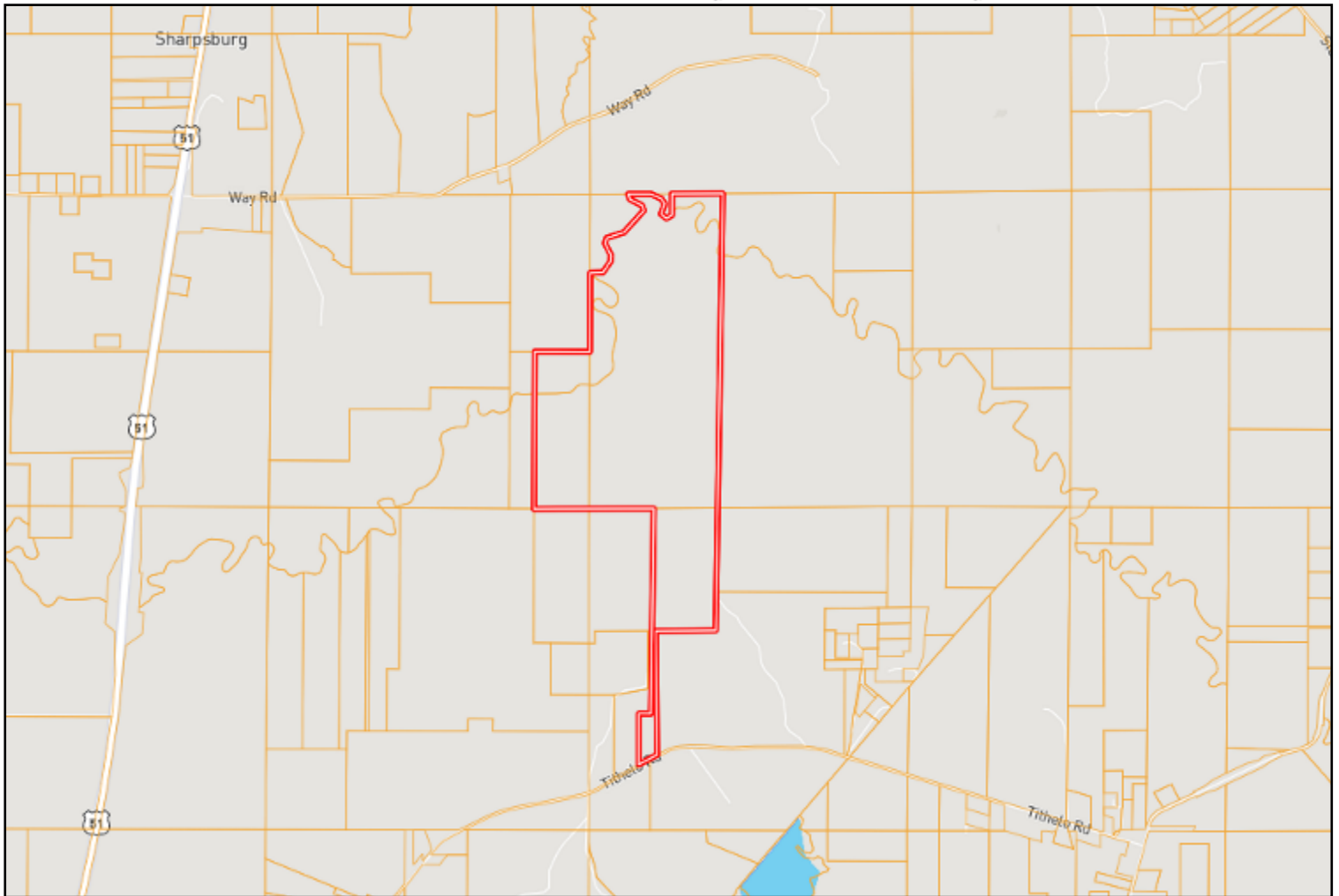


Expect More. Get More.

Information is believed to be accurate but not guaranteed.



Ownership Map



The Land & Homes Expert
You Can Trust!

TOM SMITH

ALC®, BROKER

O: 601.898.2772 C: 601.454.9397

Tom@TomSmithLand.com

TomSmithLandandHomes.com

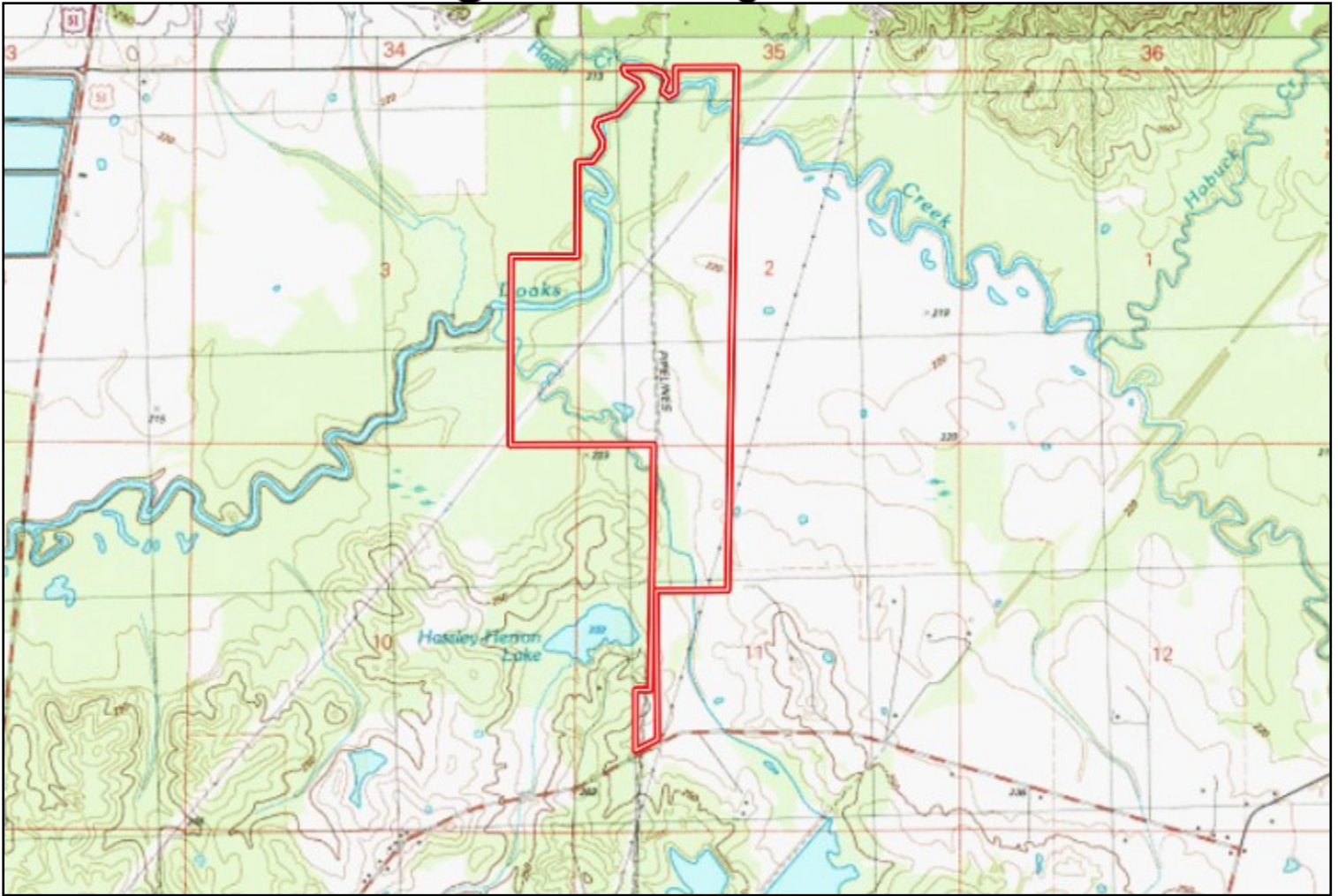


Expect More. Get More.

Information is believed to be accurate but not guaranteed.



Topography Map



The Land & Homes Expert
You Can Trust!

TOM SMITH

ALC®, BROKER

O: 601.898.2772 C: 601.454.9397

Tom@TomSmithLand.com

TomSmithLandandHomes.com

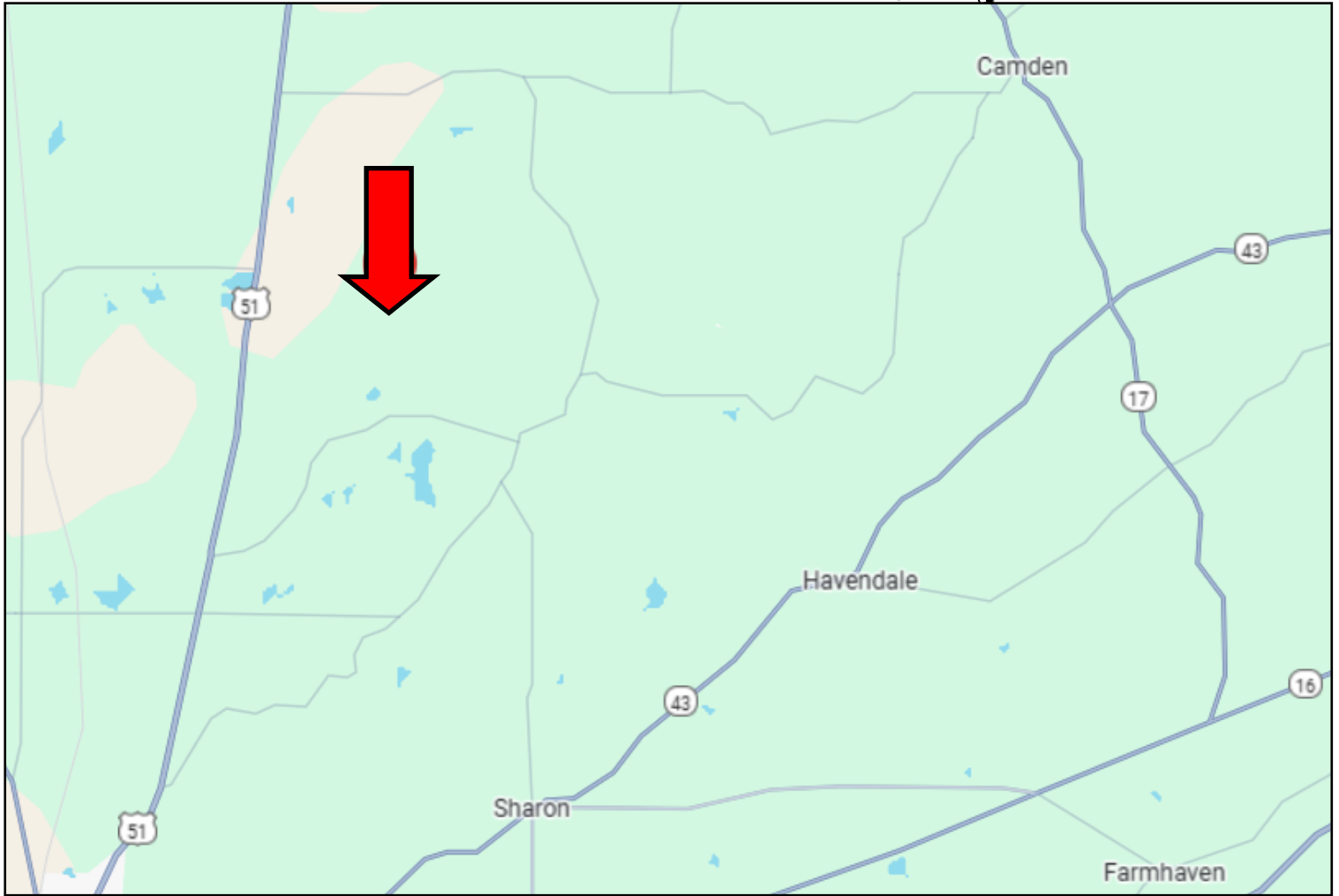


Expect More. Get More.

Information is believed to be accurate but not guaranteed.



Directional Map



Directions from US-51 in Canton, MS: Follow N Liberty St until it turns into US-51 for approximately 6.5mi. Turn right onto Tithelo Rd and in 2.5 mi turn left onto Tithelo Lake Rd. In 358ft, your destination will be on your left. [GOOGLE MAP LINK](#)



**TOM
SMITH**

ALC®, BROKER

Office: 601.898.2772

Cell: 601.454.9397

Tom@TomSmithLand.com



Expect More. Get More.

Call The Land Man Today!

TomSmithLandandHomes.com

Information is believed to be accurate but not guaranteed.

