



Peaceful 12± Acres with Charming Cottage
4402 McGee Road, Plant City

Fischbach
LAND COMPANY

Lifestyle & Luxury



COZY COTTAGE NESTLED AMONG SPRAWLING OAKS AND LUSH PASTURE!

Welcome to this beautifully remodeled 3BR/1BA home where cozy character meets stylish upgrades on a spectacular 12± acres. The kitchen steals the show with granite countertops, bold cabinetry, farmhouse sink, dining nook, and updated appliances. Natural light floods the spacious living room, highlighted by an accent wall and comfortable seating area that make it the heart of the home.

Every detail has been refreshed, from new flooring and paint to updated trim, windows, and doors. Practical spaces shine too, with a closed-in back porch, functional laundry room, and carport with covered walkway.

Acreage: 12.42± Acres
Pricing: \$875,000
Improvements: 1,500 SF 3BR / 1BA Home
30'x50' Pole Barn



 FischbachLandCompany.com/Peaceful12AcreswithCharmingCottage



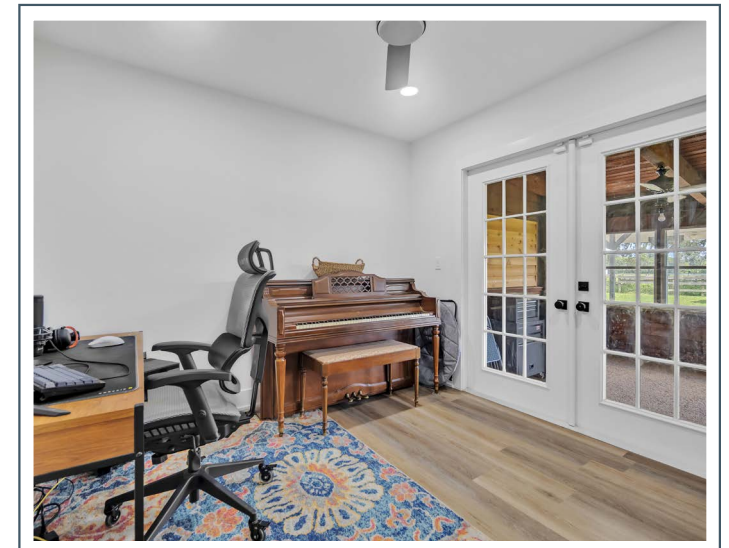
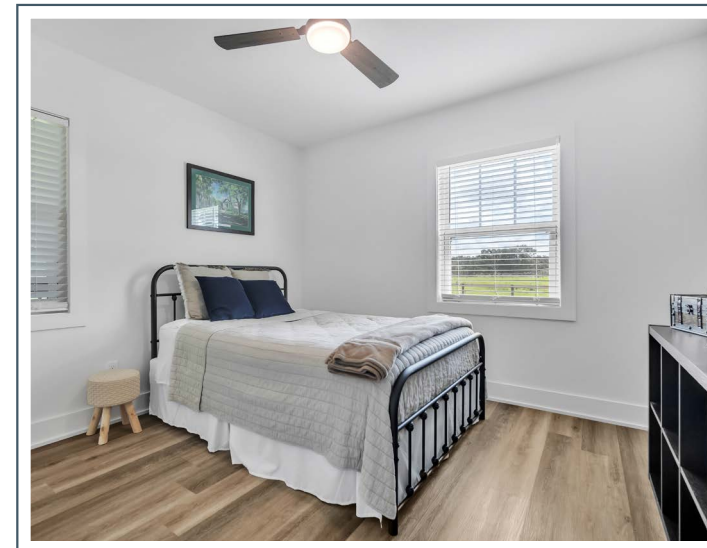
THE HEART OF THE HOME

Granite Countertops
Updated Appliances
Fully Remodeled



DESIGNED FOR EVERYDAY LIVING

Charming and Functional
Cozy and Refreshing





Beyond the home, this property's ranching roots shine through with two ponds, a large equipment barn, an agricultural well, and thriving pasture—ready for cattle, horses, or simply enjoying the open countryside.

Fischbach LAND COMPANY

Lifestyle & Luxury

REPRESENTED EXCLUSIVELY BY:



Reed Fischbach

Broker

reed@fischbachlandcompany.com



Melissa Hinton

Agent

melissa@fischbachlandcompany.com

917 S PARSONS AVENUE | BRANDON, FL 33511 | 813-540-1000