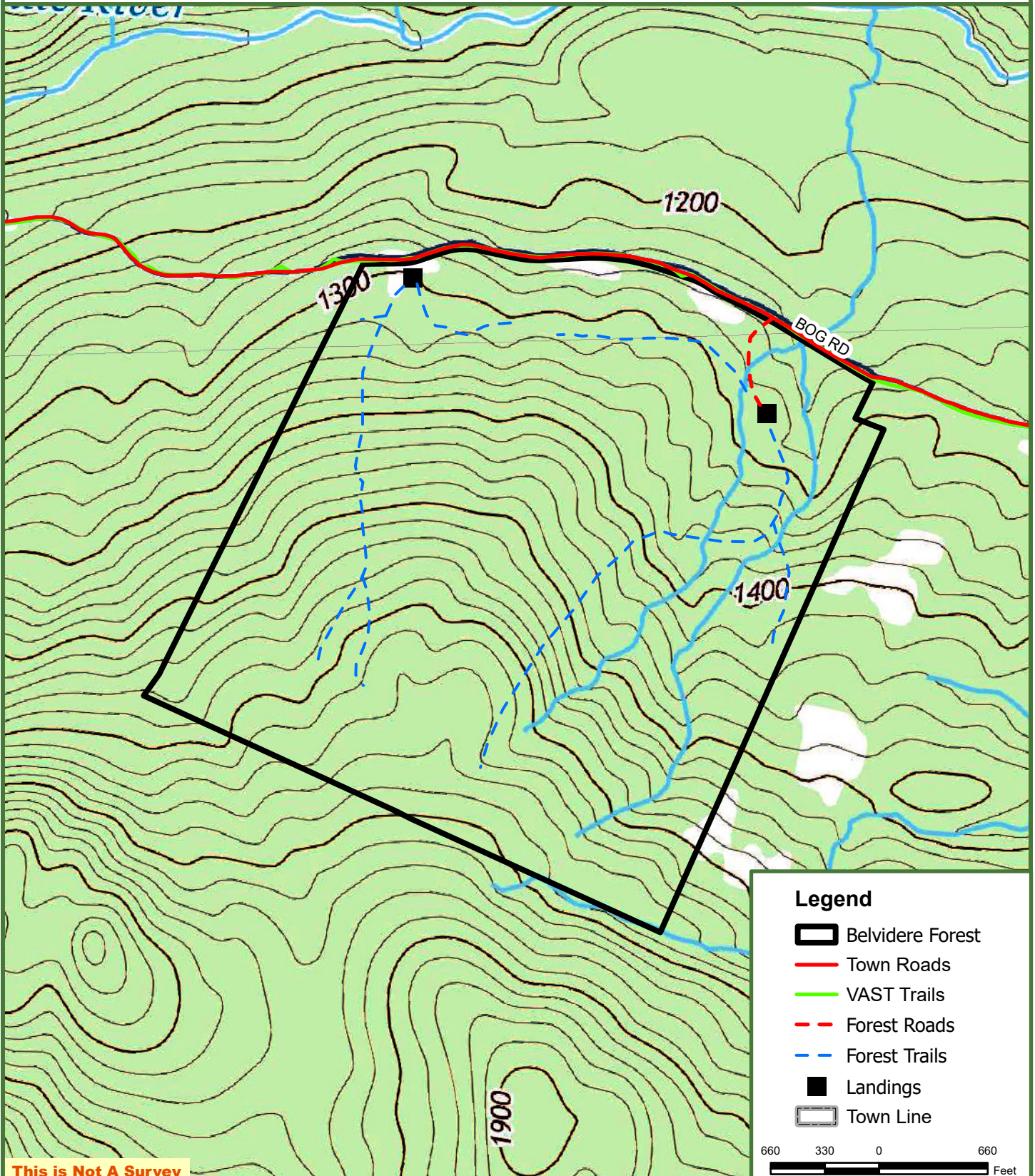




Belvidere Forest

261 Tax Acres
Belvidere, Lamoille County, Vermont



This is Not A Survey

Map produced from the best available information including VCGI town tax maps polygon, hand held GPS data, aerial photography and reference information obtained from publicly available GIS sources. Boundary lines portrayed on this map are approximate and could be different than the actual location of boundaries found in the field. Map is not a survey.