

RECREATIONAL TRACT

117.7± Acres in Franklin County, AL



\$360,000

Are you looking for a place to hunt or a timber investment? Look no further than this 117.7+/- acres in Franklin County, Alabama. This property consist of approximately 18 to 20-year-old pines with huge oaks and hardwoods in the valleys and on the ridges. This would be a great place to hunt because of the diversity and rolling topography. Whether you're looking for deer, turkey, or small game this property has it all. Hurricane Creek winds through the southern portion of this property just south of County Road 23 too. This property features over 1,700 feet of road frontage on County Road 23 and has utilities available at the road. Vina is just a few miles from this property, and it is also not far from the Mississippi State line. To schedule a private showing, call or text Tom Smith today!



**TOM
SMITH**

ALC®, BROKER

Office: 601.898.2772

Cell: 601.454.9397

Tom@TomSmithLand.com



Expect More. Get More.

Call The Land Man Today!

TomSmithLandandHomes.com

Information is believed to be accurate but not guaranteed.





The Land & Homes Expert *You Can Trust!*

TOM SMITH

ALC®, BROKER

O: 601.898.2772 C: 601.454.9397

Tom@TomSmithLand.com

TomSmithLandandHomes.com



Expect More. Get More.

Information is believed to be accurate but not guaranteed.





The Land & Homes Expert *You Can Trust!*

TOM SMITH

ALC®, BROKER

O: 601.898.2772 C: 601.454.9397

Tom@TomSmithLand.com

TomSmithLandandHomes.com

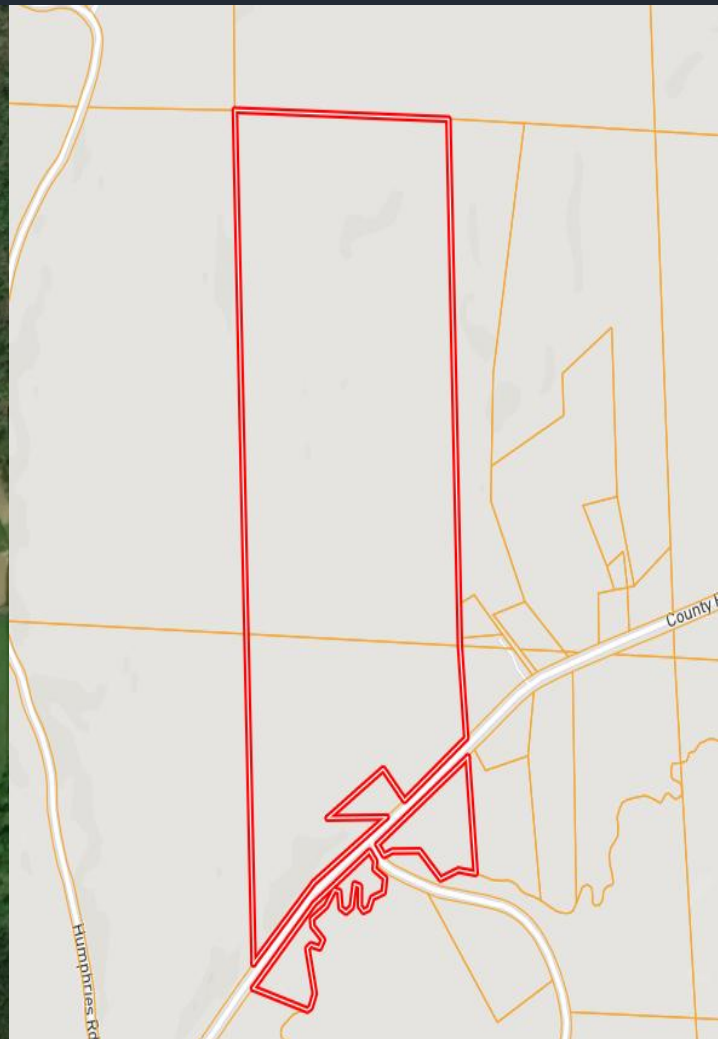
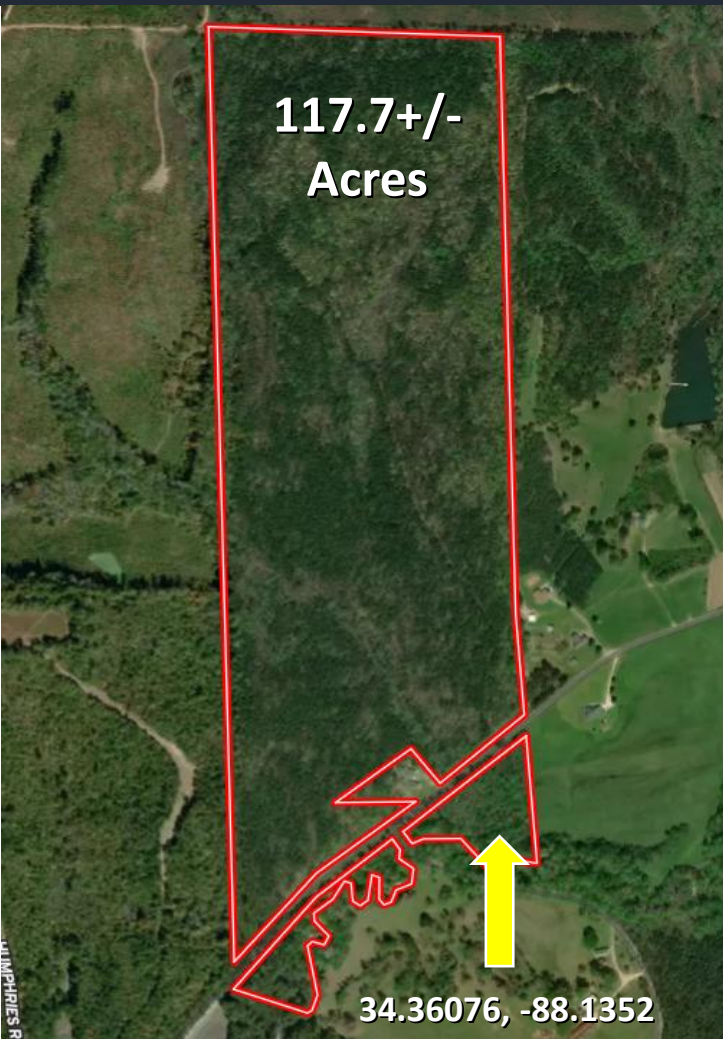


Expect More. Get More.

Information is believed to be accurate but not guaranteed.



Aerial & Ownership Map



[Click Here for Interactive Link](#)

The Land & Homes Expert
You Can Trust!

TOM SMITH

ALC®, BROKER

O: 601.898.2772 C: 601.454.9397

Tom@TomSmithLand.com

TomSmithLandandHomes.com

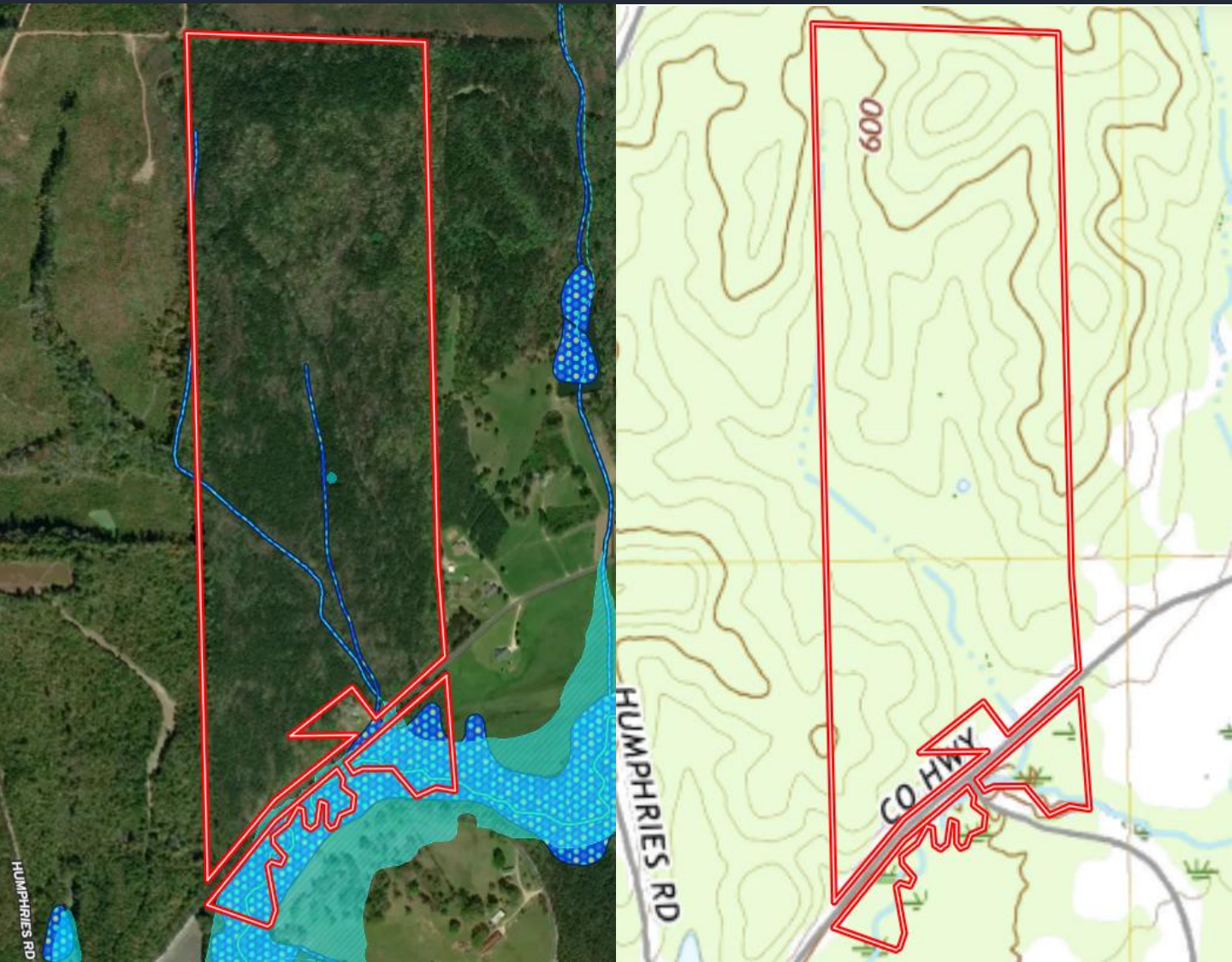


Expect More. Get More.



Information is believed to be accurate but not guaranteed.

Flood & Topo Map



The Land & Homes Expert
You Can Trust!

TOM SMITH

ALC®, BROKER

O: 601.898.2772 C: 601.454.9397

Tom@TomSmithLand.com

TomSmithLandandHomes.com

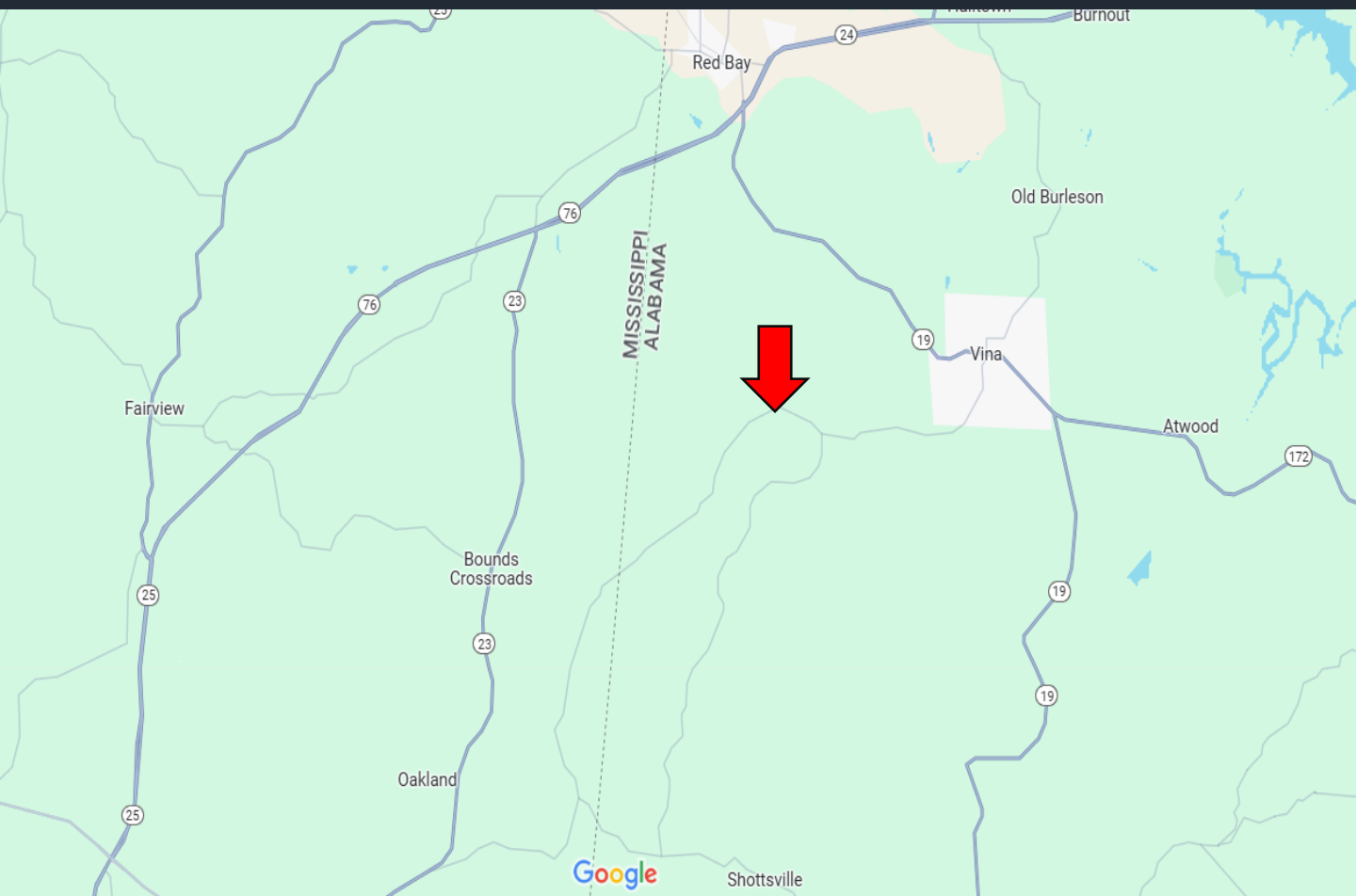


Expect More. Get More.

Information is believed to be accurate but not guaranteed.



Directional Map



Directions from AL-19N in Vina, AL: Leaving Vina, head south on County Road 23 towards AL-19 North for 5.5 miles. The property spans across both sides of the road.

GOOGLE MAP LINK



**TOM
SMITH**

ALC®, BROKER

Office: 601.898.2772

Cell: 601.454.9397

Tom@TomSmithLand.com



Expect More. Get More.

Call The Land Man Today!

TomSmithLandandHomes.com

Information is believed to be accurate but not guaranteed.

