

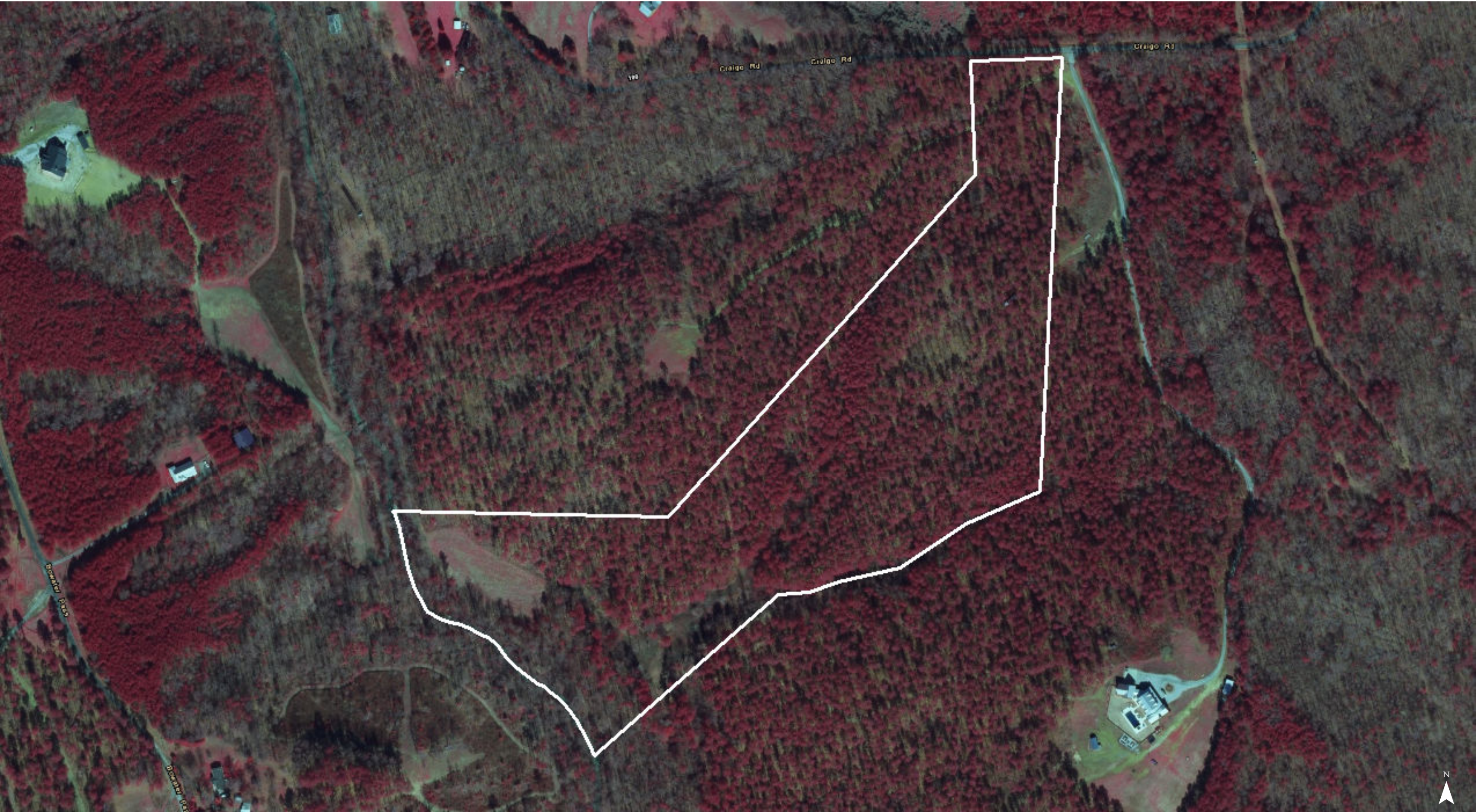


Map Updated: Wednesday, June 11, 2025. This information submitted is not guaranteed. Although obtained from reliable sources, all information should be confirmed prior to use or reliance upon the information. This document may not be reproduced in whole or in part without the express written consent of NAI Avant.

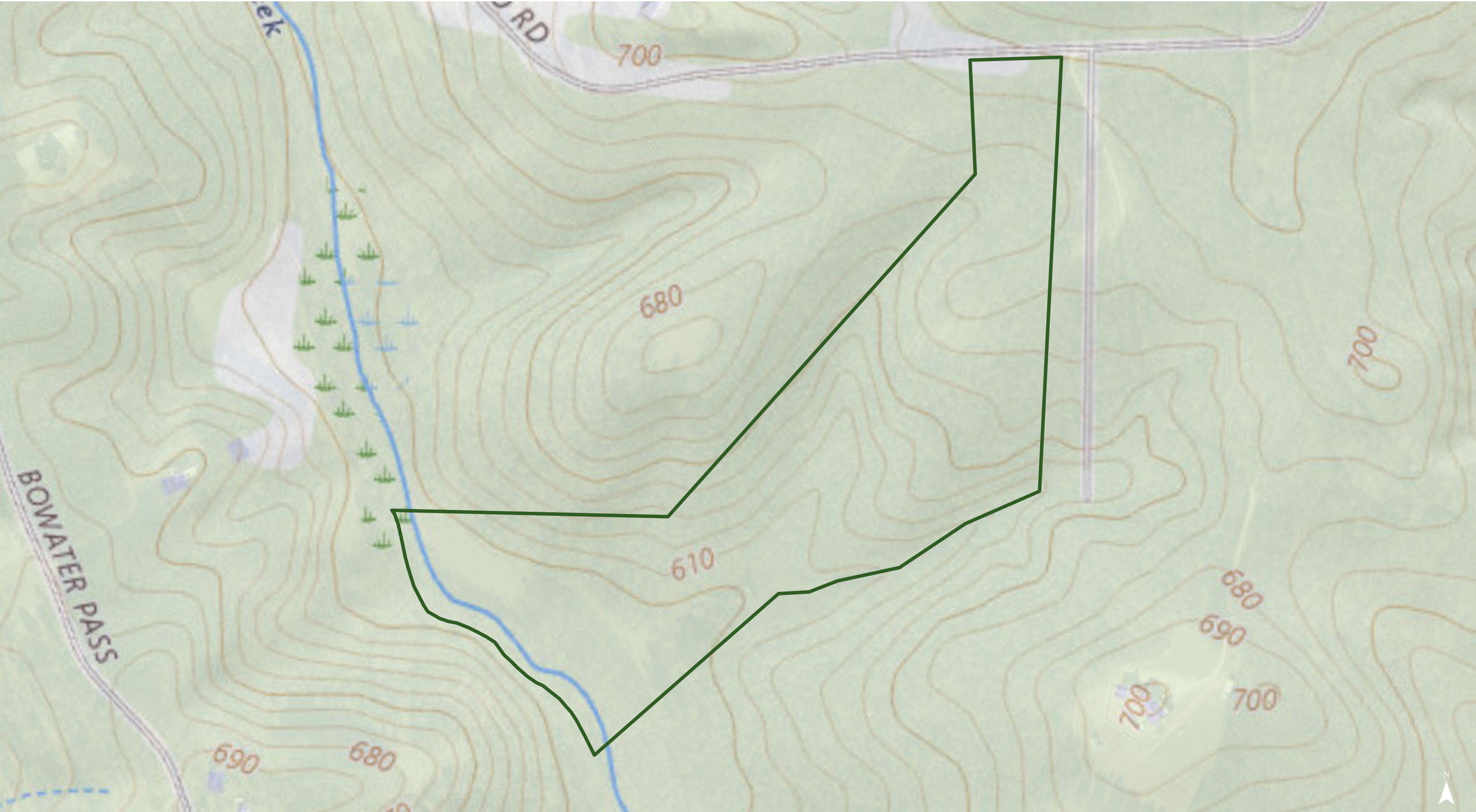




Map Updated: Wednesday, June 11, 2025. This information submitted is not guaranteed. Although obtained from reliable sources, all information should be confirmed prior to use or reliance upon the information. This document may not be reproduced in whole or in part without the express written consent of NAI Avant.



Map Updated: Wednesday, June 11, 2025. This information submitted is not guaranteed. Although obtained from reliable sources, all information should be confirmed prior to use or reliance upon the information. This document may not be reproduced in whole or in part without the express written consent of NAI Avant.



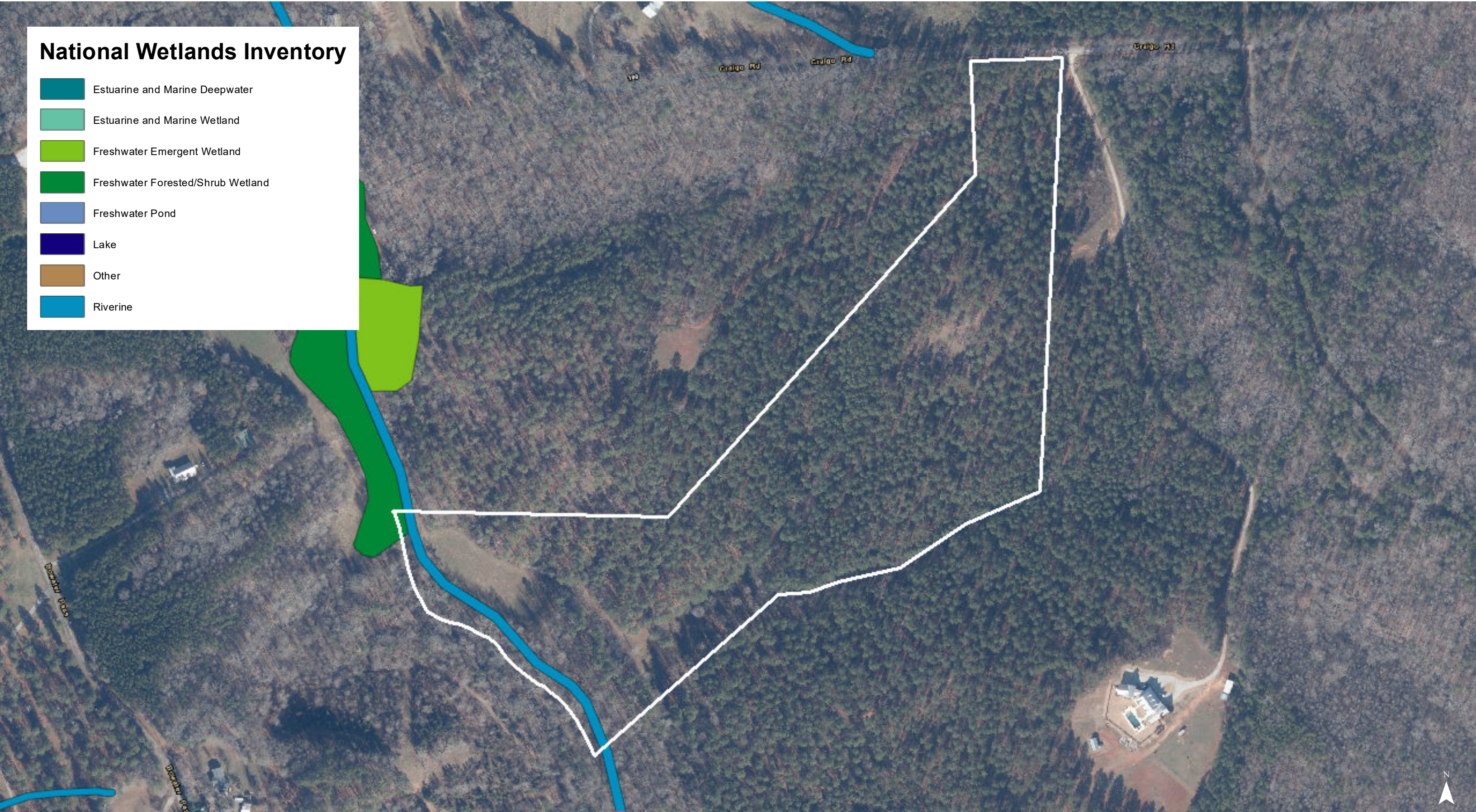
Map Updated: Wednesday, June 11, 2025. This information submitted is not guaranteed. Although obtained from reliable sources, all information should be confirmed prior to use or reliance upon the information. This document may not be reproduced in whole or in part without the express written consent of NAI Avant.



Map Updated: Wednesday, June 11, 2025. This information submitted is not guaranteed. Although obtained from reliable sources, all information should be confirmed prior to use or reliance upon the information. This document may not be reproduced in whole or in part without the express written consent of NAI Avant.

National Wetlands Inventory

- Estuarine and Marine Deepwater
- Estuarine and Marine Wetland
- Freshwater Emergent Wetland
- Freshwater Forested/Shrub Wetland
- Freshwater Pond
- Lake
- Other
- Riverine



Map Updated: Wednesday, June 11, 2025. This information submitted is not guaranteed. Although obtained from reliable sources, all information should be confirmed prior to use or reliance upon the information. This document may not be reproduced in whole or in part without the express written consent of NAI Avant.



Map Unit Description (Brief, Generated)

Greenville County, South Carolina

[Minor map unit components are excluded from this report]

Map unit: Cb - Cartecay and Toccoa soils

Component: Cartecay (60%)

The Cartecay component makes up 60 percent of the map unit. Slopes are 0 to 2 percent. This component is on flood plains on piedmonts. The parent material consists of loamy alluvium. Depth to a root restrictive layer is greater than 60 inches. The natural drainage class is somewhat poorly drained. Water movement in the most restrictive layer is high. Available water to a depth of 60 inches (or restricted depth) is moderate. Shrink-swell potential is low. This soil is occasionally flooded. It is not ponded. A seasonal zone of water saturation is at 19 inches during January, February, March. Organic matter content in the surface horizon is about 2 percent. This component is in the F136XY610GA Flood plain forest, wet ecological site. Nonirrigated land capability classification is 3w. This soil does not meet hydric criteria.

Component: Toccoa (30%)

The Toccoa component makes up 30 percent of the map unit. Slopes are 0 to 2 percent. This component is on flood plains on piedmonts. The parent material consists of loamy alluvium. Depth to a root restrictive layer is greater than 60 inches. The natural drainage class is moderately well drained. Water movement in the most restrictive layer is high. Available water to a depth of 60 inches (or restricted depth) is low. Shrink-swell potential is low. This soil is occasionally flooded. It is not ponded. A seasonal zone of water saturation is at 30 inches during January, February, March, April. Organic matter content in the surface horizon is about 2 percent. This component is in the F136XY620GA Flood plain forest, moist ecological site. Nonirrigated land capability classification is 2w. This soil does not meet hydric criteria.

Map unit: McB - Madison sandy loam, 2 to 6 percent slopes

Component: Madison (100%)

The Madison component makes up 100 percent of the map unit. Slopes are 2 to 6 percent. This component is on hillslopes on piedmonts. The parent material consists of clayey residuum weathered from granite and gneiss. Depth to a root restrictive layer is greater than 60 inches. The natural drainage class is well drained. Water movement in the most restrictive layer is moderately high. Available water to a depth of 60 inches (or restricted depth) is moderate. Shrink-swell potential is low. This soil is not flooded. It is not ponded. There is no zone of water saturation within a depth of 72 inches. Organic matter content in the surface horizon is about 1 percent. This component is in the F136XY820GA Acidic upland forest, moist ecological site. Nonirrigated land capability classification is 2e. This soil does not meet hydric criteria.

Map unit: McC - Madison sandy loam, 6 to 10 percent slopes

Component: Madison (100%)

The Madison component makes up 100 percent of the map unit. Slopes are 6 to 10 percent. This component is on hillslopes on piedmonts. The parent material consists of clayey residuum weathered from granite and gneiss. Depth to a root restrictive layer is greater than 60 inches. The natural drainage class is well drained. Water movement in the most restrictive layer is moderately high. Available water to a depth of 60 inches (or restricted depth) is moderate. Shrink-swell potential is low. This soil is not flooded. It is not ponded. There is no zone of water saturation within a depth of 72 inches. Organic matter content in the surface horizon is about 1 percent. This component is in the F136XY820GA Acidic upland forest, moist ecological site. Nonirrigated land capability classification is 3e. This soil does not meet hydric criteria.

Greenville County, South Carolina

[Minor map unit components are excluded from this report]

Map unit: MdC2 - Madison clay loam, 6 to 10 percent slopes, eroded

Component: Madison (100%)

The Madison component makes up 100 percent of the map unit. Slopes are 6 to 10 percent. This component is on hillslopes on piedmonts. The parent material consists of clayey residuum weathered from granite and gneiss. Depth to a root restrictive layer is greater than 60 inches. The natural drainage class is well drained. Water movement in the most restrictive layer is moderately high. Available water to a depth of 60 inches (or restricted depth) is high. Shrink-swell potential is low. This soil is not flooded. It is not ponded. There is no zone of water saturation within a depth of 72 inches. Organic matter content in the surface horizon is about 1 percent. This component is in the F136XY820GA Acidic upland forest, moist ecological site. Nonirrigated land capability classification is 4e. This soil does not meet hydric criteria.

Map unit: PcE - Pacolet sandy loam, 15 to 25 percent slopes

Component: Pacolet (90%)

The Pacolet component makes up 90 percent of the map unit. Slopes are 15 to 25 percent. This component is on interfluves on southern piedmonts. The parent material consists of residuum weathered from granite and/or residuum weathered from gneiss. Depth to a root restrictive layer is greater than 60 inches. The natural drainage class is well drained. Water movement in the most restrictive layer is moderately high. Available water to a depth of 60 inches (or restricted depth) is high. Shrink-swell potential is low. This soil is not flooded. It is not ponded. There is no zone of water saturation within a depth of 72 inches. Organic matter content in the surface horizon is about 1 percent. This component is in the F136XY820GA Acidic upland forest, moist ecological site. Nonirrigated land capability classification is 6e. This soil does not meet hydric criteria.