

588 Rufus C Burnette Drive, Pittsboro

\$ 350,000

10.1740 acres



For Sale

RARE OPPORTUNITY - 10.1740 acres in a prime location. Nestled in a highly desirable and rapidly growing area, this exceptional property offers privacy, natural beauty, and investment potential. Located just minutes from downtown Pittsboro, Chatham Park, and the future Disney/Asteria development, this homesite is ideally situated for both tranquil living and easy access to amenities. Enjoy close proximity to Chapel Hill, with a smooth commute to RTP and RDU. Enjoy the benefits of protective covenants that help preserve the quality and character of the area. This expansive parcel lies within a large acreage subdivision on a private road with a recorded Road Maintenance Agreement. The land features mature vegetation, a gently sloped topography perfect for building, perc permit, and a scenic stream along the border - offering both beauty and functionality. Build your dream estate, enjoy your space, and secure a piece of one of the most exciting growth corridors in the Triangle region.



Eric Andrews, ALC

(919) 542-0523

eric@ericandrewsrealtor.com

73 Hillsboro Street (P.O. Box 1400)

Pittsboro, NC 27312

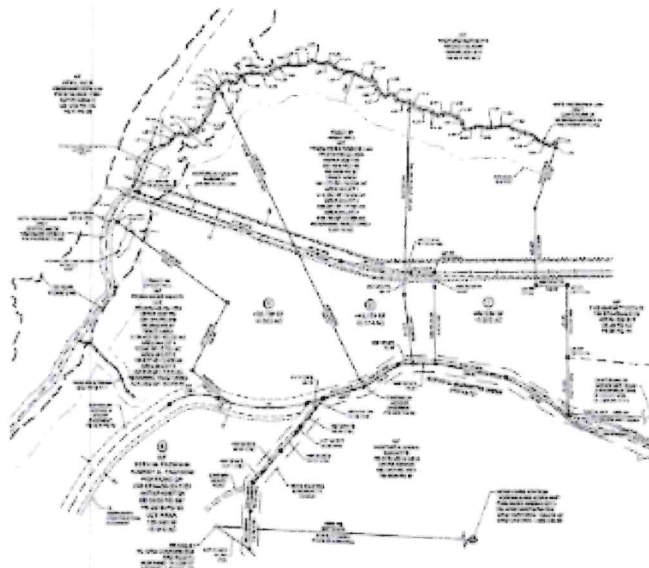
Txt (919) 548-1014



**CAROLINA
PROPERTIES**



AREA TABLE									
LOT NUMBER	OWNER	AREA (ACRES)	AREA (SQUARE FEET)	AREA (SQUARE FEET)	AREA (SQUARE FEET)	AREA (SQUARE FEET)	AREA (SQUARE FEET)	AREA (SQUARE FEET)	AREA (SQUARE FEET)
000001	JOHN J. BROWN	0.10	4,356	4,356	4,356	4,356	4,356	4,356	4,356
000002	JOHN J. BROWN	0.10	4,356	4,356	4,356	4,356	4,356	4,356	4,356
000003	JOHN J. BROWN	0.10	4,356	4,356	4,356	4,356	4,356	4,356	4,356
000004	JOHN J. BROWN	0.10	4,356	4,356	4,356	4,356	4,356	4,356	4,356
000005	JOHN J. BROWN	0.10	4,356	4,356	4,356	4,356	4,356	4,356	4,356
000006	JOHN J. BROWN	0.10	4,356	4,356	4,356	4,356	4,356	4,356	4,356
000007	JOHN J. BROWN	0.10	4,356	4,356	4,356	4,356	4,356	4,356	4,356
000008	JOHN J. BROWN	0.10	4,356	4,356	4,356	4,356	4,356	4,356	4,356
000009	JOHN J. BROWN	0.10	4,356	4,356	4,356	4,356	4,356	4,356	4,356
000010	JOHN J. BROWN	0.10	4,356	4,356	4,356	4,356	4,356	4,356	4,356



Lot	Area	Owner	Area	Owner	Area	Owner	Area	Owner	Area	Owner
000001	0.10	JOHN J. BROWN	0.10	JOHN J. BROWN	0.10	JOHN J. BROWN	0.10	JOHN J. BROWN	0.10	JOHN J. BROWN
000002	0.10	JOHN J. BROWN	0.10	JOHN J. BROWN	0.10	JOHN J. BROWN	0.10	JOHN J. BROWN	0.10	JOHN J. BROWN
000003	0.10	JOHN J. BROWN	0.10	JOHN J. BROWN	0.10	JOHN J. BROWN	0.10	JOHN J. BROWN	0.10	JOHN J. BROWN
000004	0.10	JOHN J. BROWN	0.10	JOHN J. BROWN	0.10	JOHN J. BROWN	0.10	JOHN J. BROWN	0.10	JOHN J. BROWN
000005	0.10	JOHN J. BROWN	0.10	JOHN J. BROWN	0.10	JOHN J. BROWN	0.10	JOHN J. BROWN	0.10	JOHN J. BROWN
000006	0.10	JOHN J. BROWN	0.10	JOHN J. BROWN	0.10	JOHN J. BROWN	0.10	JOHN J. BROWN	0.10	JOHN J. BROWN
000007	0.10	JOHN J. BROWN	0.10	JOHN J. BROWN	0.10	JOHN J. BROWN	0.10	JOHN J. BROWN	0.10	JOHN J. BROWN
000008	0.10	JOHN J. BROWN	0.10	JOHN J. BROWN	0.10	JOHN J. BROWN	0.10	JOHN J. BROWN	0.10	JOHN J. BROWN
000009	0.10	JOHN J. BROWN	0.10	JOHN J. BROWN	0.10	JOHN J. BROWN	0.10	JOHN J. BROWN	0.10	JOHN J. BROWN
000010	0.10	JOHN J. BROWN	0.10	JOHN J. BROWN	0.10	JOHN J. BROWN	0.10	JOHN J. BROWN	0.10	JOHN J. BROWN

