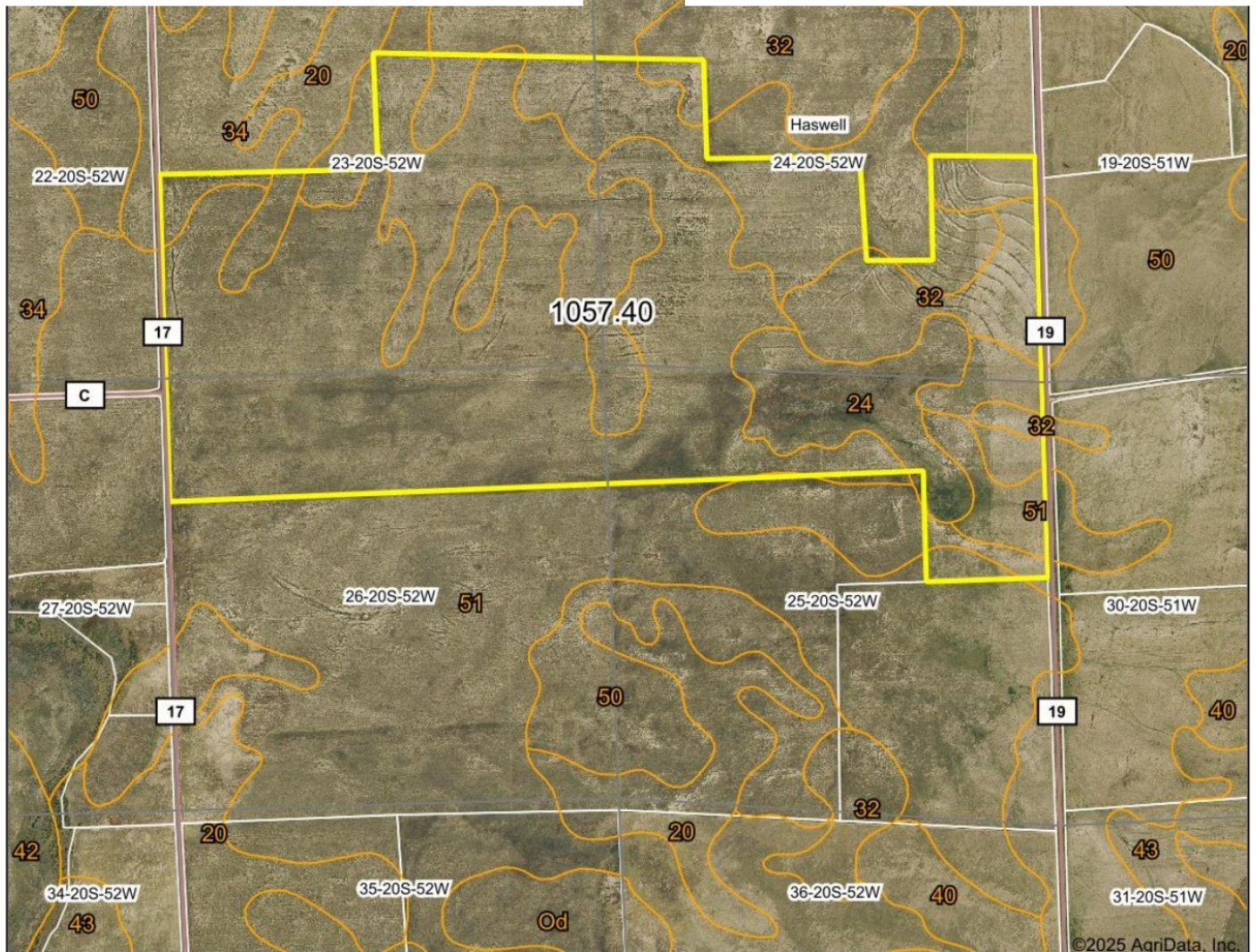


KIOWA COUNTY CRP FARMLAND

Listing Price: \$581,575
\$550 per acre



Boundary Center: 38.296307, -103.189512

0ft 2119ft 4237ft

LISTING # 25031



VIRGIL GEORGE, EMPLOYING BROKER

VG@RXL.LAND

Office: 719-346-5420 | Mobile: 719-349-1966

1510 Rose Avenue | Burlington, CO 80807

Licensed in Colorado & Kansas

Your Local AuctionTime.com Representative
Call to List your Equipment Today!

call me today!



www.rockingxland.com

Where a Handshake Still Means Something!

NOTICE * BROKER HAS GATHERED INFORMATION FROM SOURCES DEEM RELIABLE. ALTHOUGH BROKER MAKES NO WARRANTIES EXPRESSED OR IMPLIED. BROKER SHALL BE REPRESENTING AS A TRANSACTION BROKER. VIEW ADDITIONAL INFORMATION AND PROPERTIES AT WWW.ROCKINGXLAND.COM

Kiowa County CRP Farmland
Township 20 South, Range 52 West
S1/2 & S1/2NE1/4 Section 23
SW1/4 & SW1/4NW1/4 & E1/2 and SW1/4SE1/4 Section 24
SE1/4NE1/4 & N1/2 Section 25
N1/2N1/2 Section 26
1,057.41 acres CRP along paved Road 19
11 1/2 miles South of Haswell, CO
Near Adobe Creek Reservoir
Annual payment: \$22,872.00 (\$21.63/acre)
Contract ends 9/30/2032
CRP will be prorated to the date of closing
Sellers own 1/2 of all mineral rights which will convey
to the buyer after 10 years, when production ceases.



call me today!

VIRGIL GEORGE, EMPLOYING BROKER

VG@RXL.LAND

Office: 719-346-5420 | Mobile: 719-349-1966

1510 Rose Avenue | Burlington, CO 80807

Licensed in Colorado & Kansas

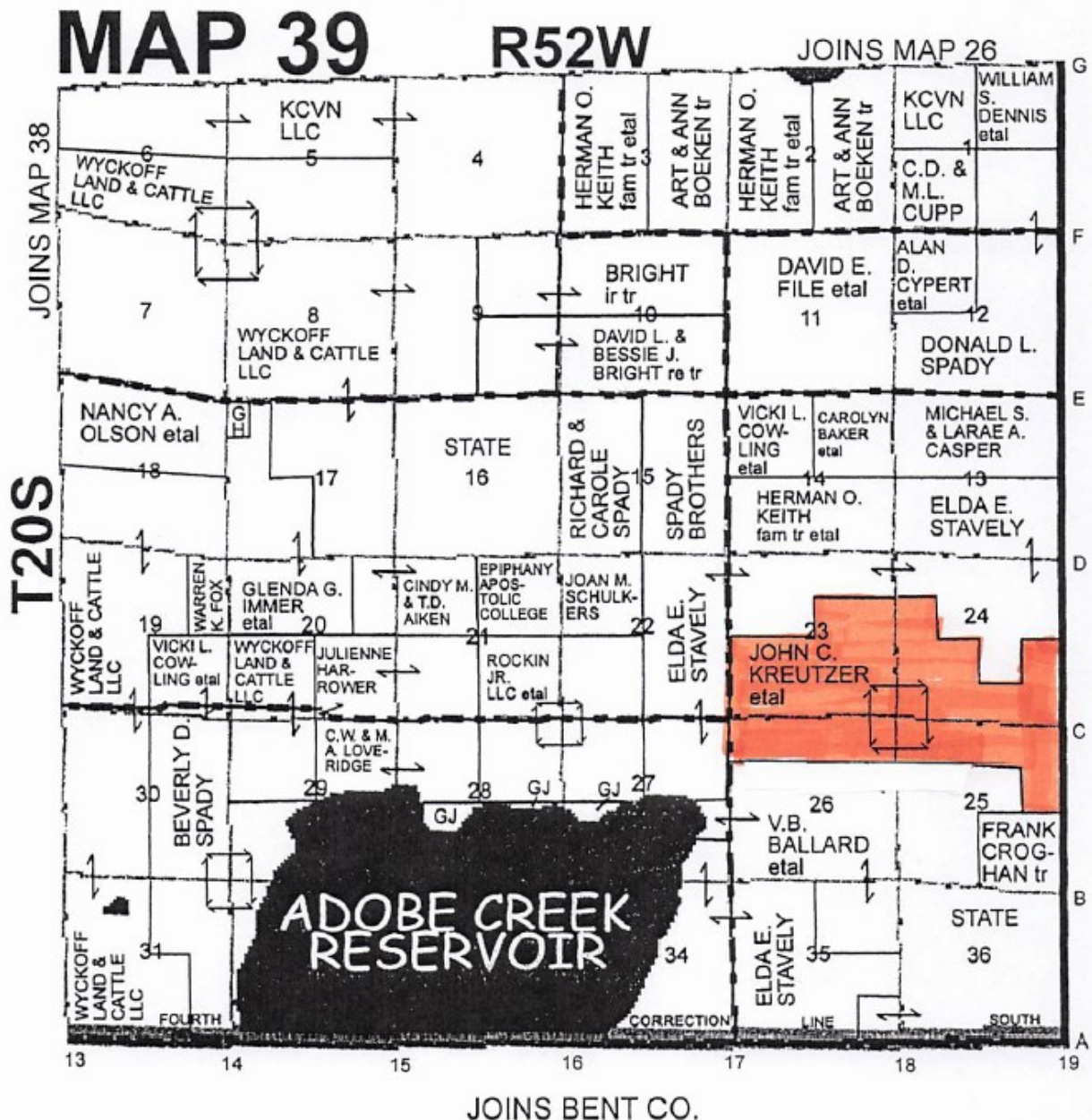
Your Local AuctionTime.com Representative
Call to List your Equipment Today!



www.rockingxland.com

Where a Handshake Still Means Something!

NOTICE * BROKER HAS GATHERED INFORMATION FROM SOURCES DEEM RELIABLE. ALTHOUGH BROKER MAKES NO WARRANTIES EXPRESSED OR IMPLIED. BROKER SHALL BE REPRESENTING AS A TRANSACTION BROKER. VIEW ADDITIONAL INFORMATION AND PROPERTIES AT WWW.ROCKINGXLAND.COM



call me today!

VIRGIL GEORGE, EMPLOYING BROKER

VG@RXL.LAND

Office: 719-346-5420 | Mobile: 719-349-1966

1510 Rose Avenue | Burlington, CO 80807

Licensed in Colorado & Kansas

Your Local AuctionTime.com Representative
Call to List your Equipment Today!

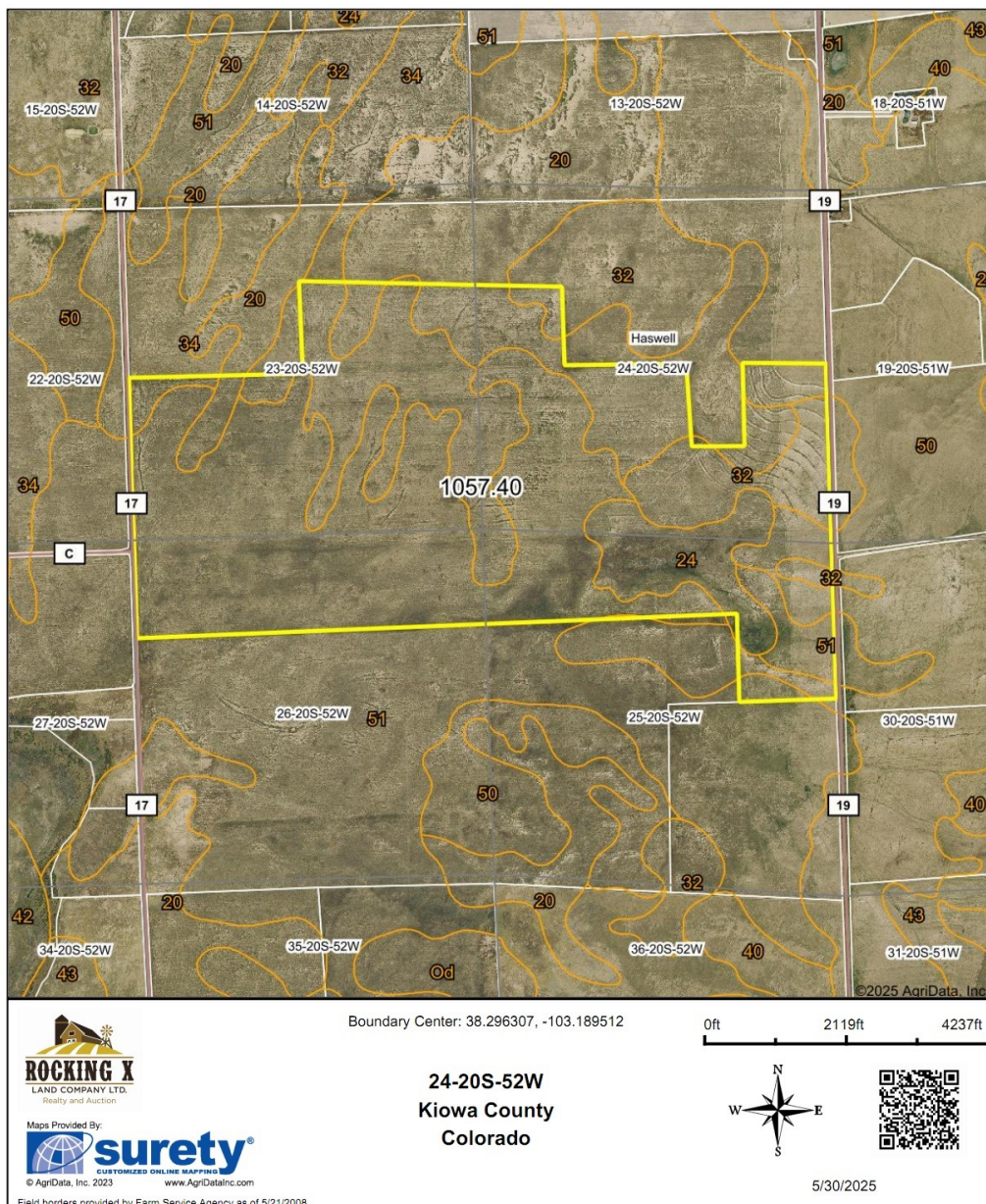


www.rockingxland.com

Where a Handshake Still Means Something!

NOTICE * BROKER HAS GATHERED INFORMATION FROM SOURCES DEEM RELIABLE. ALTHOUGH BROKER MAKES NO WARRANTIES EXPRESSED OR IMPLIED. BROKER SHALL BE REPRESENTING AS A TRANSACTION BROKER. VIEW ADDITIONAL INFORMATION AND PROPERTIES AT WWW.ROCKINGXLAND.COM

Aerial Map



call me today!

VIRGIL GEORGE, EMPLOYING BROKER

VG@RXL.LAND

Office: 719-346-5420 | Mobile: 719-349-1966

1510 Rose Avenue | Burlington, CO 80807

Licensed in Colorado & Kansas

Your Local AuctionTime.com Representative
Call to List your Equipment Today!



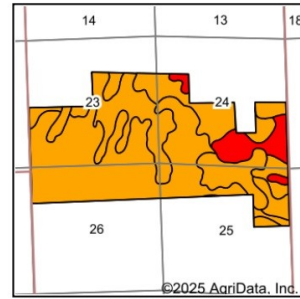
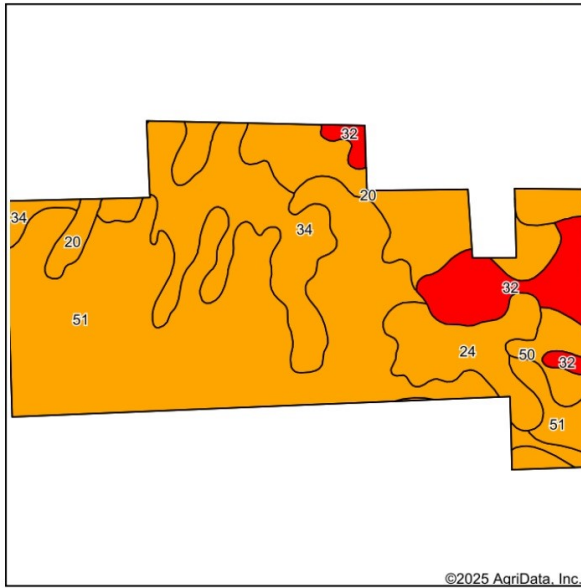
www.rockingxland.com

Where a Hand-

shake Still Means Something!

NOTICE * BROKER HAS GATHERED INFORMATION FROM SOURCES DEEM RELIABLE. ALTHOUGH BROKER MAKES NO WARRANTIES EXPRESSED OR IMPLIED. BROKER SHALL BE REPRESENTING AS A TRANSACTION BROKER. VIEW ADDITIONAL INFORMATION AND PROPERTIES AT WWW.ROCKINGXLAND.COM

Soils Map



State: **Colorado**
 County: **Kiowa**
 Location: **24-20S-52W**
 Township: **Haswell**
 Acres: **1057.4**
 Date: **5/30/2025**



Maps Provided By:



surety
 CUSTOMIZED ONLINE MAPPING
 www.AgriDataInc.com



Soils data provided by USDA and NRCS.

Area Symbol: CO061, Soil Area Version: 23

Code	Soil Description	Acres	Percent of field	Non-Irr Class Legend	Non-Irr Class *c
51	Fort sandy loam, 0 to 5 percent slopes	532.15	50.3%		IVe
34	Fort, eroded-Kimera complex, 0 to 2 percent slopes	169.37	16.0%		IVc
20	Kimera loam, 0 to 3 percent slopes	139.61	13.2%		IVc
32	Singerton-Pultney complex, 1 to 10 percent slopes	83.10	7.9%		VIe
24	Manzanola silty clay loam, saline, 0 to 2 percent slopes	77.85	7.4%		IVc
50	Fort loam, 0 to 3 percent slopes	55.32	5.2%		IVc
				Weighted Average	4.16

*c: Using Capabilities Class Dominant Condition Aggregation Method

Soils data provided by USDA and NRCS.



call me today!

VIRGIL GEORGE, EMPLOYING BROKER

VG@RXL.LAND

Office: 719-346-5420 | Mobile: 719-349-1966

1510 Rose Avenue | Burlington, CO 80807

Licensed in Colorado & Kansas

Your Local AuctionTime.com Representative
Call to List your Equipment Today!



www.rockingxland.com

Where a Handshake Still Means Something!

NOTICE * BROKER HAS GATHERED INFORMATION FROM SOURCES DEEM RELIABLE. ALTHOUGH BROKER MAKES NO WARRANTIES EXPRESSED OR IMPLIED. BROKER SHALL BE REPRESENTING AS A TRANSACTION BROKER. VIEW ADDITIONAL INFORMATION AND PROPERTIES AT WWW.ROCKINGXLAND.COM