

RECREATIONAL HUNTING TRACT

101.6± Acres in Jasper County, MS



\$279,400

This 101.6+/- acres in Jasper County, MS, is a hunter's dream. This property features internal trails, six shooting houses, six food plots, and a wild game for days. This property is loaded with deer and turkey and has been well-managed for years. An existing campsite on the property is ready for a cabin or camper. Both power and water are on site. This property also features over 1000 feet of road frontage on County Road 2337. There are multiple points of access throughout, allowing hunters to play the wind during the season, and there is a 10+/- to 12+/- acre lake site on this property, too! All this is available just 15 minutes from Bay Springs and 35 minutes from Laurel, MS. Call or text Dale Wilds or David Belden today for a private showing!



DALE WILDS
REALTOR®

O: 601.898.2772 | C: 662.715.7109
Dale@TomSmithLand.com



DAVID BELDEN
ALC®, REALTOR®

O: 601.898.2772 | C: 601.415.3884
DBelden@TomSmithLand.com

TomSmithLandandHomes.com

Information is believed to be accurate but not guaranteed.





DALE WILDS
REALTOR®

O: 601.898.2772 | C: 662.715.7109
Dale@TomSmithLand.com



DAVID BELDEN
ALC®, REALTOR®

O: 601.898.2772 | C: 601.415.3884
DBelden@TomSmithLand.com

TomSmithLandandHomes.com

Information is believed to be accurate but not guaranteed.





MUD 11:56PM 01/08/2023 53F CAMP STAND



MUD 04:40PM 01/02/2025 60F POWER LINE



MUD 10:22PM 01/09/2025 37F POWER LINE



DALE WILDS
REALTOR®

O: 601.898.2772 | C: 662.715.7109
Dale@TomSmithLand.com



DAVID BELDEN
ALC®, REALTOR®

O: 601.898.2772 | C: 601.415.3884
DBelden@TomSmithLand.com

TomSmithLandandHomes.com

Information is believed to be accurate but not guaranteed.





DALE WILDS
REALTOR®

O: 601.898.2772 | C: 662.715.7109
Dale@TomSmithLand.com



DAVID BELDEN
ALC®, REALTOR®

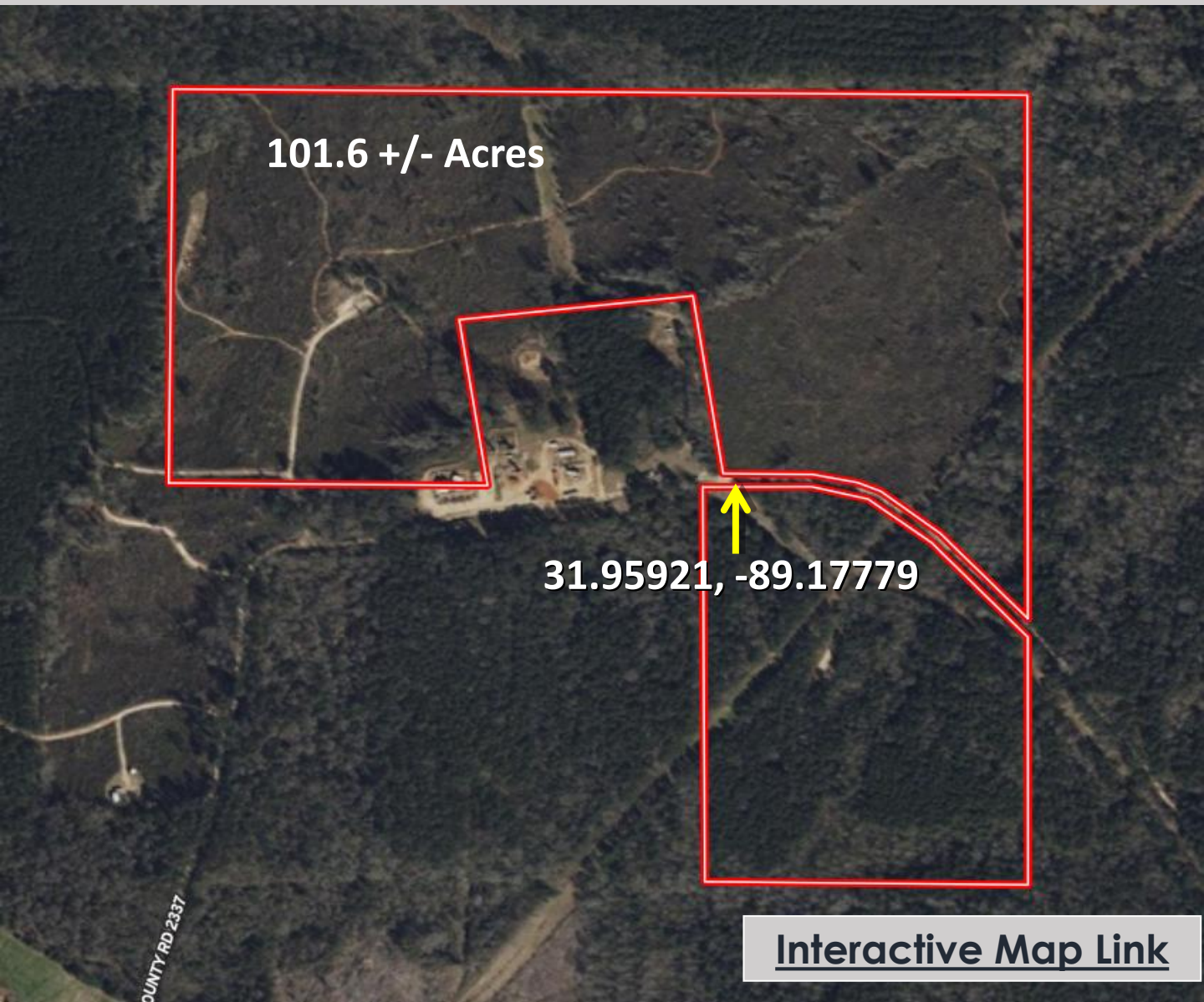
O: 601.898.2772 | C: 601.415.3884
DBelden@TomSmithLand.com

TomSmithLandandHomes.com

Information is believed to be accurate but not guaranteed.



Aerial Map



DALE WILDS
REALTOR®

O: 601.898.2772 | C: 662.715.7109
Dale@TomSmithLand.com



DAVID BELDEN
ALC®, REALTOR®

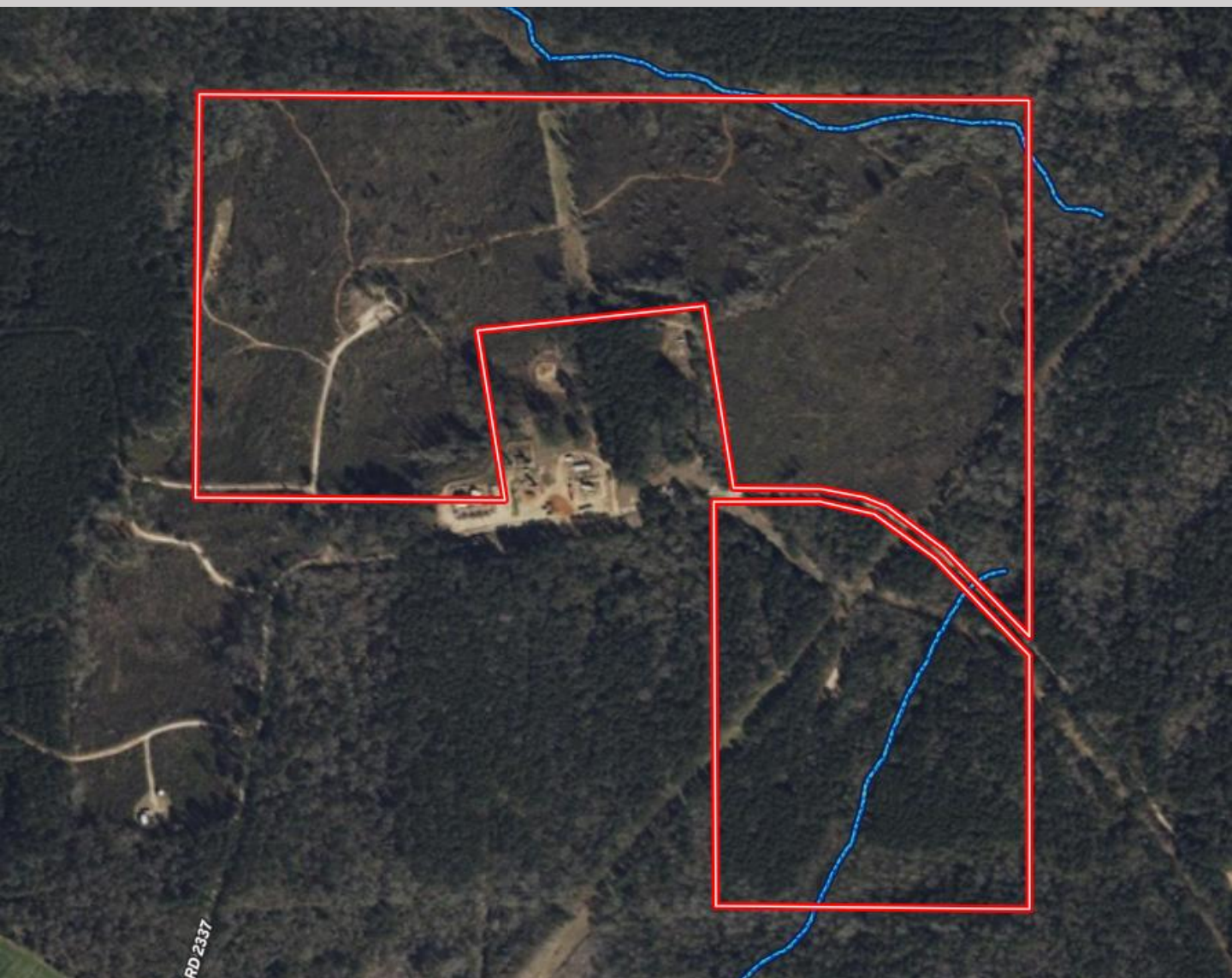
O: 601.898.2772 | C: 601.415.3884
DBelden@TomSmithLand.com

TomSmithLandandHomes.com

Information is believed to be accurate but not guaranteed.



Flood Map



DALE WILDS
REALTOR®

O: 601.898.2772 | C: 662.715.7109
Dale@TomSmithLand.com



DAVID BELDEN
ALC®, REALTOR®

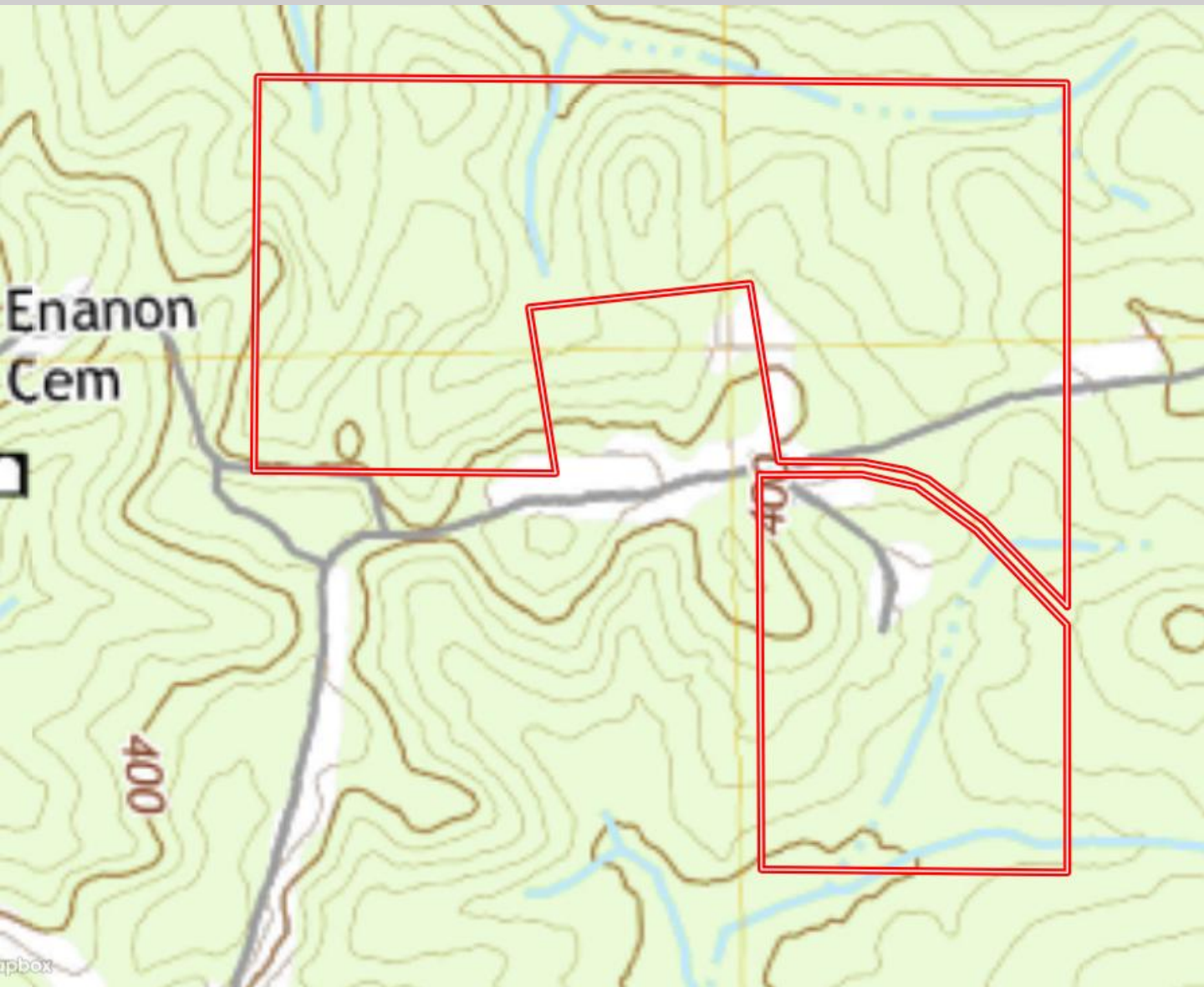
O: 601.898.2772 | C: 601.415.3884
DBelden@TomSmithLand.com

TomSmithLandandHomes.com

Information is believed to be accurate but not guaranteed.



Topo Map



DALE WILDS
REALTOR®

O: 601.898.2772 | C: 662.715.7109
Dale@TomSmithLand.com



DAVID BELDEN
ALC®, REALTOR®

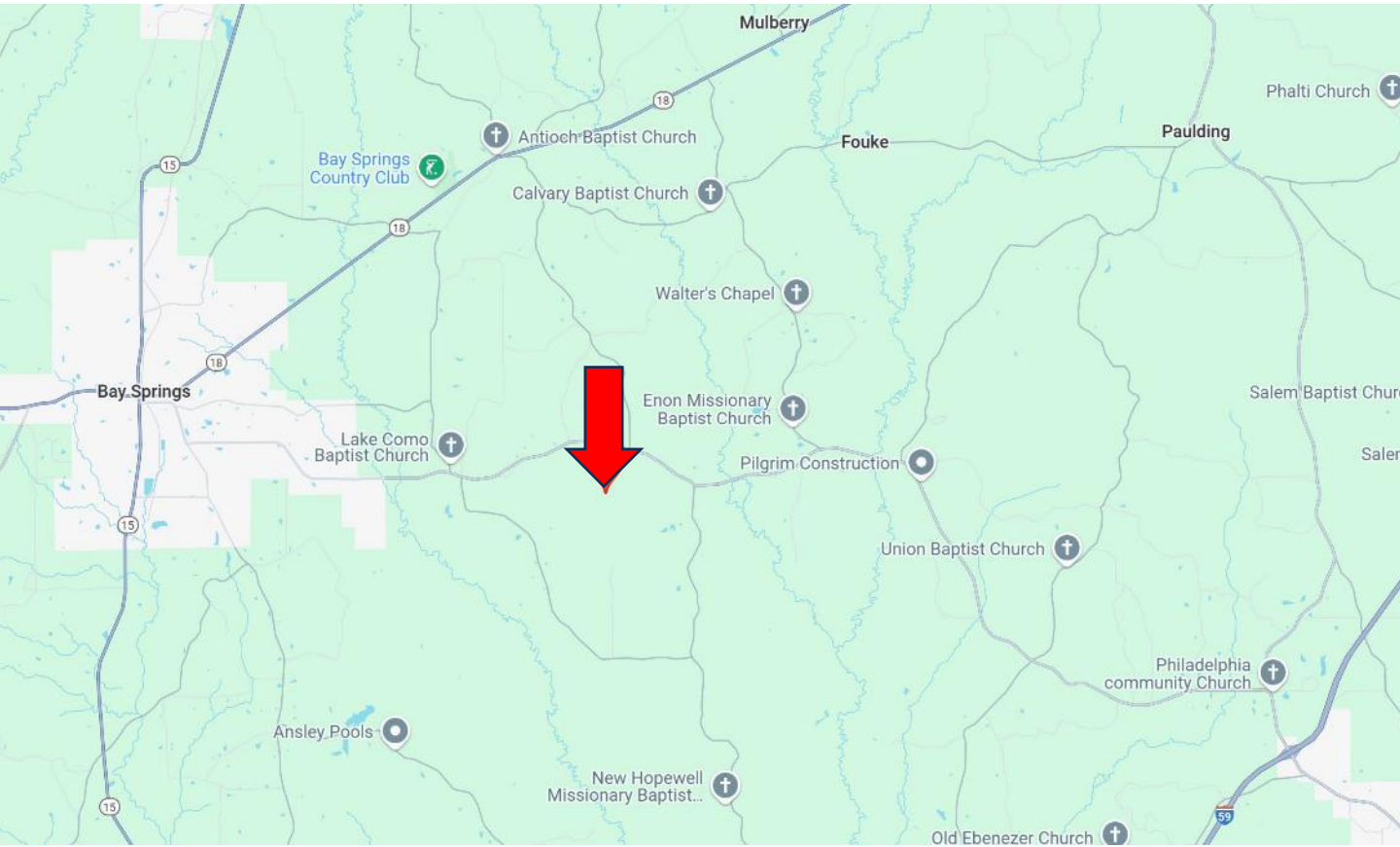
O: 601.898.2772 | C: 601.415.3884
DBelden@TomSmithLand.com

TomSmithLandandHomes.com

Information is believed to be accurate but not guaranteed.



Directional Map



Directions from the intersection of Hwy 18 and Hwy 15 in Bay Springs, MS: Continue on Hwy 18 E for 0.9 miles. Turn right onto Houston Street and travel 0.1 miles. Turn left onto Hwy 528 and travel 0.7 miles. Turn left to continue on Hwy 528 East for 4.1 miles. Turn right onto CR 23 and travel 1.4 miles. Make a slight left onto CR 2337. After 1.2 miles, the property will be on your right.

[GOOGLE MAP LINK](#)



DALE WILDS
REALTOR®

O: 601.898.2772 | C: 662.715.7109
Dale@TomSmithLand.com



DAVID BELDEN
ALC®, REALTOR®

O: 601.898.2772 | C: 601.415.3884
DBelden@TomSmithLand.com

TomSmithLandandHomes.com

Information is believed to be accurate but not guaranteed.

