



Breedlove®

FARMS | ESTATES | LAND

Leaning Oak Farm

3400 Baucom Manor Road
Monroe, North Carolina 28110

Julie R. Breedlove
704.661.9619

julie@breedlovecarolinas.com
breedlovesfarmsestatesandland.com

Premier | **Sotheby's**
INTERNATIONAL REALTY





Leaning Oak Farm | Custom Equestrian Estate w/Architectural Distinction

Located behind a gated stone entrance, Leaning Oak Farm welcomes homeowners seeking both privacy and a lifestyle immersed in equestrian elegance. The estate spans manicured pastures lined with cryptomeria and holly trees, leading to a custom-designed residence by Triple T Builders, set amidst a canopy of mature hardwoods.

The exterior showcases Hardie Board and stone finishes designed for durability. Curated flower boxes, stone walkways and patios, and professionally designed landscaping create a natural extension of the home's refined character. Inside, the residence offers 4,958 square feet of thoughtfully designed living space.

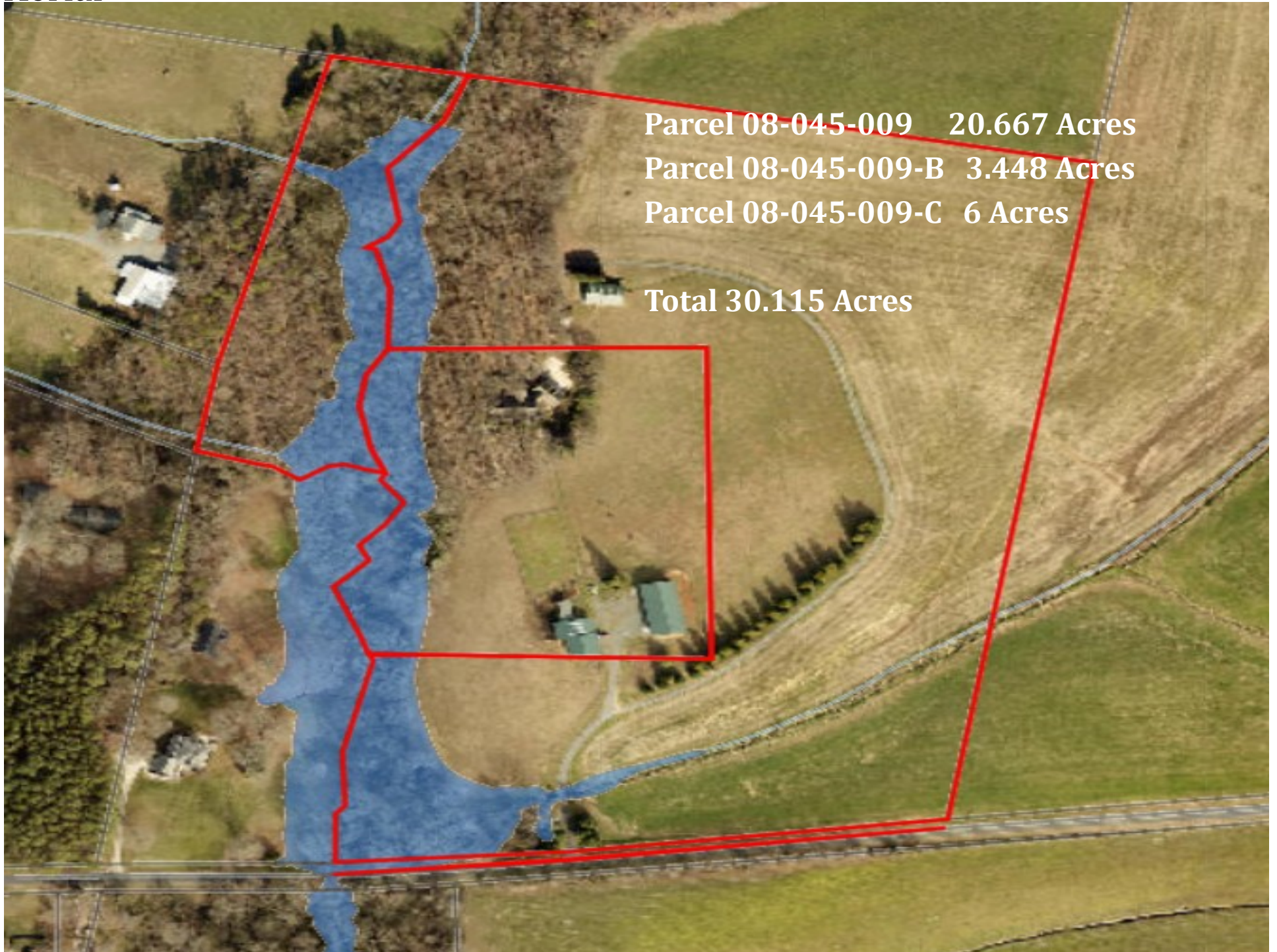
The tiled foyer sets the tone, featuring a commissioned mural and a wall fountain. Venetian plaster accents, arched doorways, stone details, and custom millwork are enhanced by integrated lighting and built-in cabinetry throughout. Main-level ceilings rise to ten feet with eight-foot doors, complemented by hardwood, tile, and slate flooring.

Multiple living areas — including a sunroom, den, and keeping room . The expansive kitchen includes granite counter-tops, a three-inch butcher block island with a vegetable sink, custom cabinetry, tile backsplash, and appliances from Blue Star, Bosch, GE, and KitchenAid. A butler's pantry connects to the formal dining room and offers a wet bar, wine cooler, and icemaker. The breakfast room features a knotty pine domed ceiling and overlooks a park-like backyard. The primary suite features two walk-in closets, a dedicated shoe closet, sauna, and whirlpool garden tub. An adjoining flex space offers additional versatility. Upstairs are two guest suites, two full baths, and a large library with cherry built-ins. Over 1,000 square feet of wired, insulated storage offers conversion potential for a media or game room.

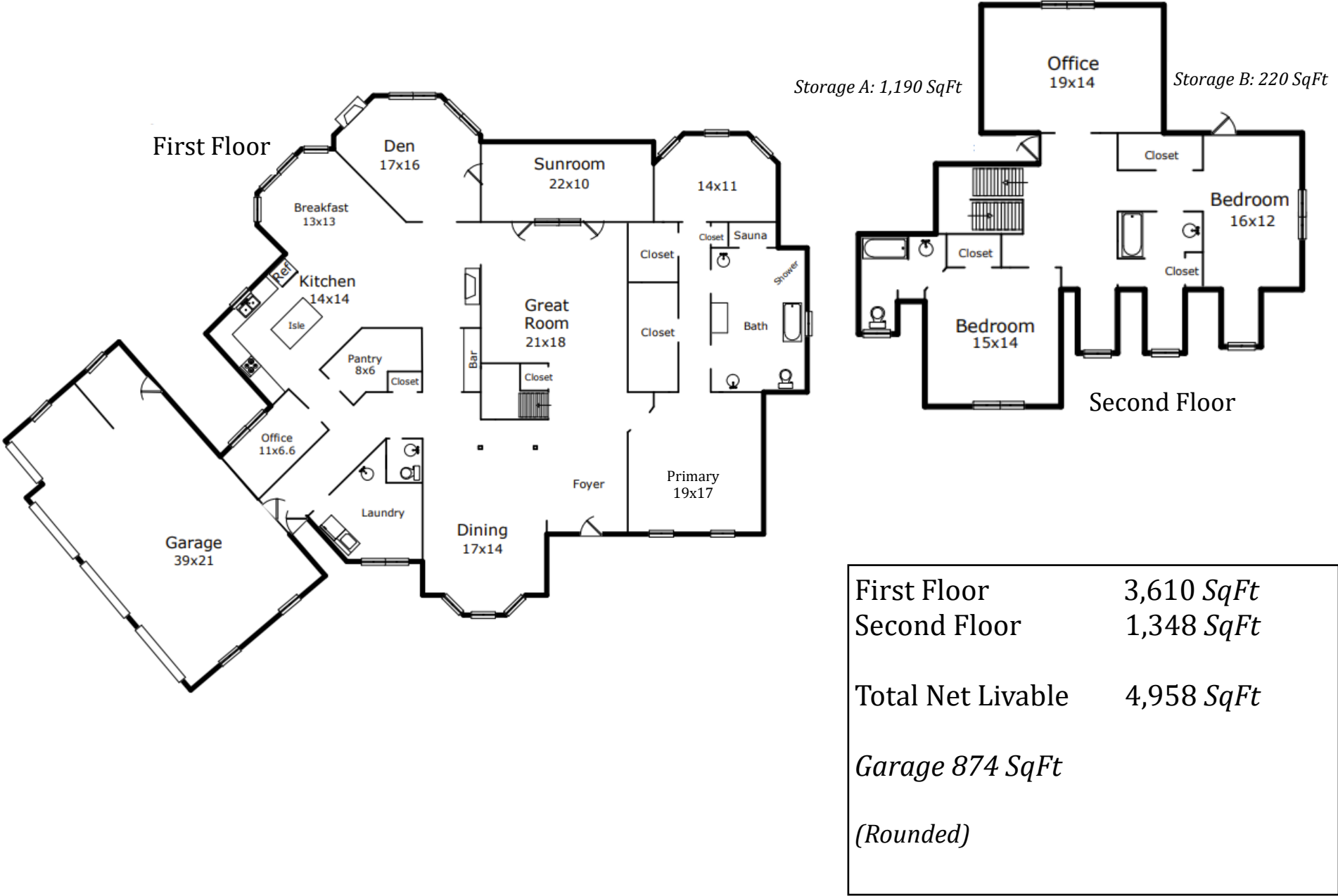
Equestrian facilities include two barns — each with three stalls, tack rooms, covered overhangs, and adjoining pastures. One barn is oak board and batten with a concrete aisle, feed room, and equipment storage. A 36-foot addition expands its utility. The second, a contemporary metal-sided barn, offers additional shelter flexibility with automatic waterers and Dutch doors. Fencing is a high-tensile, four-strand rubberized system with a flex-type top rail. Additional amenities include a climate-controlled workshop, four-bay covered parking, and an enclosed storage room.

Creekside trails accommodate riders, while the property's location offers proximity to I-485, Charlotte, Mint Hill, Matthews, and Monroe.

Aerial



Floor Plan



Interior Features

4,958 Sq Ft — Built 2002

3 Bedrooms/3.5 Bathrooms

Custom Wide Solid Wood & Glass Front Door

Commissioned 6½' x 8' Canvas Painting in Tile Foyer

Professional Faux Painting & Authentic Venetian Plaster Columns

10' Ceilings and 8' Doorways Main Level

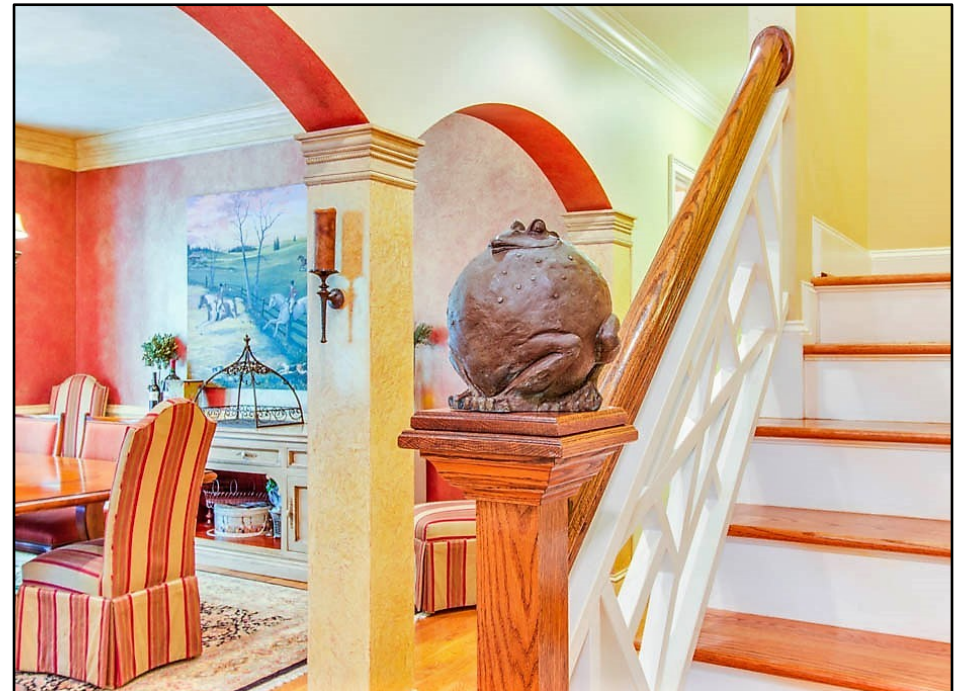
Arched Entranceways

Extensive Trim Work

Recessed Can Lights



Friends & Family Will Love the Charming and Creative Bronze Mr. & Mrs. Toad Mascots that Grace the Stair Columns



Interior Features *(cont.)*

Stone Work Around Fireplaces and Entrance Hall Between Living Room & Keeping Room

Hardwood Floors w/150 Yr Old Walnut Inlay Main Level

Custom Upgraded Lighting/Accent Lighting & Recessed Lighting
Coat Closet

Hardwood Floor/2nd Floor Landing & Stair Risers

Built-In Trophy Shelves & Display Niches

Multiple Sets of Bay Windows

Back Hall/Mud Room w/Slate Floor and Built-In Bench & Cubbies

Laundry Room

Utility Sink & Multiple Cabinets

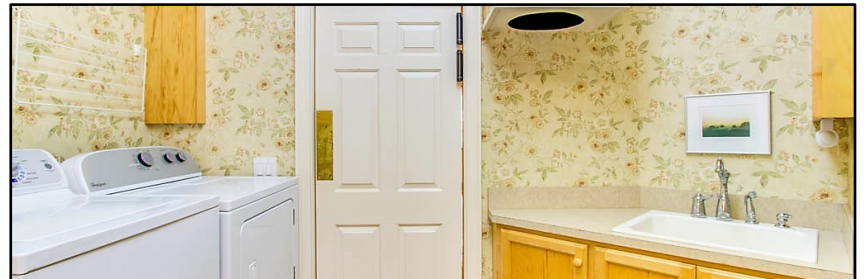
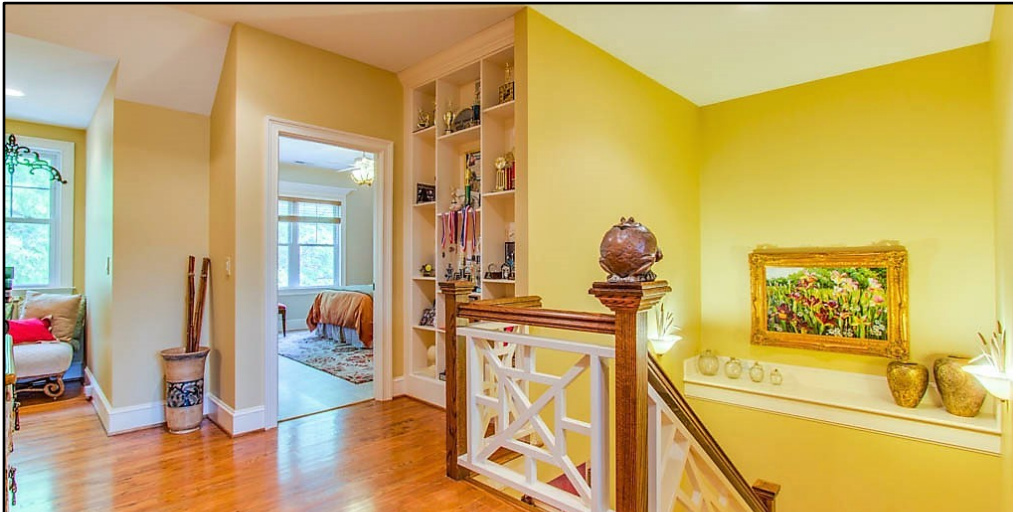
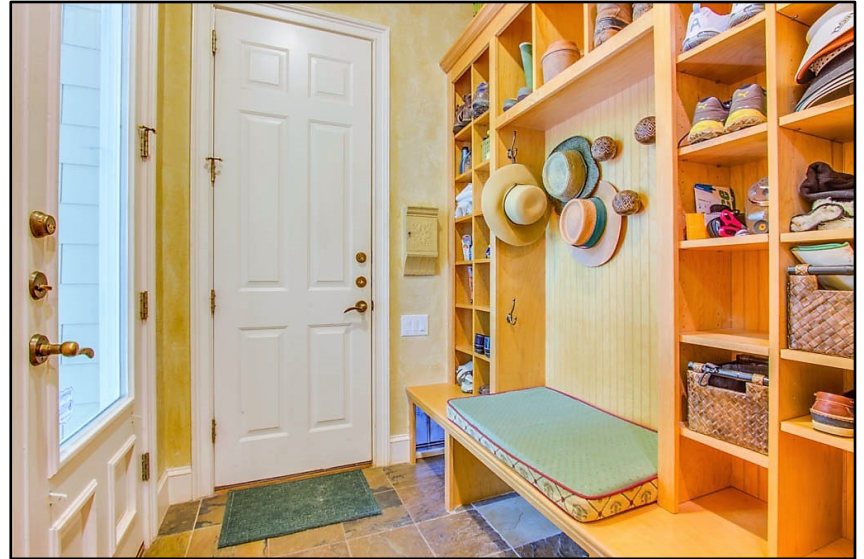
Hobby/Sewing Counters

Slate Floor

Raised Washer/Dryer Platforms & Laundry Shute

3 Hot H₂O Heaters (*1 designated for Kitchen & 1 for Primary Suite*)

Surround Sound & Ceiling Fans



Kitchen

Granite Counter Tops

Tile Backsplash

Custom Cabinets w/Display Niche/Book Cases

Pull-Out Baskets & Accent Lighting

3" Butcher Block Island

Pendant Lights

Franke Stainless Steel Kitchen Sink

Touch-Sensitive Brizo Faucet

Raised Granite Breakfast Bar (*Bar Stools Convey*)

Electrolux Double Ovens

Bluestar 6-Burner Gas Cooktop

Stainless Steel Ventahood Exhaust

KitchenAid Warming Drawer

Bosch Dishwasher

KitchenAid French Door w/Freezer Drawer Refrigerator

GE Advantium Microwave/Convection Oven

Walk-In Pantry w/Built-In Shelves

Private Kitchen Office w/Built-in Desk, File Drawers & Book Cases





Breakfast Room & Keeping Room

Breakfast Area w/Cathedral Tongue & Groove Ceiling
 Keeping Room w/Stone Fireplace & Hearth
 Stone Arched Entranceway to Living Room
 French Doors to Den



Sunroom & Den

Sunroom

Tile Floors
EZ E-Breeze Windows
Ceiling Fans
French Doors
Climate Controlled
Speakers
Back Yard & Pasture Views

Den

Walls of Windows Overlooking Backyard
Access to Sunroom
Stone Woodburning Fireplace w/Commissioned
Stone Carving quotation by Cervantes
*("You are a King by your own Fireside as much as any
Monarch on his throne")*





Primary Suite

Main Level Primary

Hardwood Floors

Ceiling Fan

2 Oversized Walk-In Closets w/Custom Built-Ins

Separate Shoe Closet

14' x 11' Sitting Room or Exercise Room w/Bay Windows
& Plantation Shutters

Bathroom

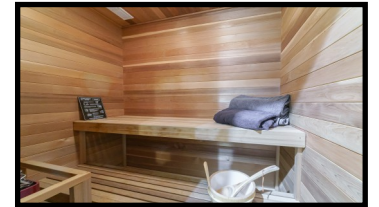
Heated Tile Floor

2 Granite Top Vanities & Makeup Vanity

Sauna

Jacuzzi Garden Tub

Walk-In Tile Shower



Great Room

Entertainment Center Cabinets & Lighted Bookcases/Display Shelves

Surround Sound Speakers

French Doors to Sunroom

Ceiling Fan & Accent Lighting



Dining Room & Butler's Pantry

Hardwood Floors

Bay Window

Venetian Plaster Columns & Arched Entrance

Chair Railing & Detailed Crown Molding

Butler's Pantry

Granite Counter Tops & Custom Cabinets

Wet Bar

Wine Cooler & Scotsman Icemaker



Second Floor

Two Guest Bedrooms

Guest 1 — Ensuite Bedroom w/Walk-In Closet
Tub/Shower Combo
Laundry Chute & Built-In Shelves

Guest 2 — Walk-In Closet
Access to Full Bathroom

Guest Bathroom — Tub/Shower Combo
2 Entrances (*Hall and BR*)



Second Floor (cont.)

Office/Library

2nd Floor Office w/Cherry Built-In Desk & Bookcases
Hardwood Floors & French Doors
Arched Window Overlooking Farm

Attic Storage/Expansion

2 Walk-In Storage Rooms

- (1) 1,190 SqFt w/Windows/Insulation & Wiring
- (2) 220 SqFt



Mechanicals

Furnace & Central AC x 3 (*2002, 2013, 2015*)

3 Hot H₂O Heaters x (*2 Electric, 1 Propane*)

Propane Tank Above Ground (*Owned*)

Well and Septic

High Speed Spectrum Internet (*Home & Barn*)

Sealed Crawl Space w/Dehumidifier & Monitor



Exterior Features

Stone Columns & Wrought Iron Electronic Entrance Gate

3-Car & Golf Cart Side-Load Attached Garage

Epoxy Flooring

Built-In Sink, Work Bench, Cabinets & Peg Boards

Hardi Board/Stone

Plantation Shutters/Flower Boxes

Front Porch Stone Columns

Paved Driveway w/Concrete Parking Pad

New Paver Walkways and Patio w/Fire-Pit

Potting Shed

Irrigation

Invisible Dog Fence (*4 Acres — Uncertain Operating Status*)



Equestrian Features

3 Fenced Pastures

4-Strand Rubberized High Tensile w/4" Flex PVC Top Strand

2 Barns (*Roofs 2019*)

Pasture Automatic Waterers

Barn 1

Oak Board & Batten w/Metal Roof

3 Stalls +1 Shed-Row Stall

Equipment/Shavings Shed

Dutch Doors to Overhang

Dry Paddock

Concrete Aisleway

Tack Room

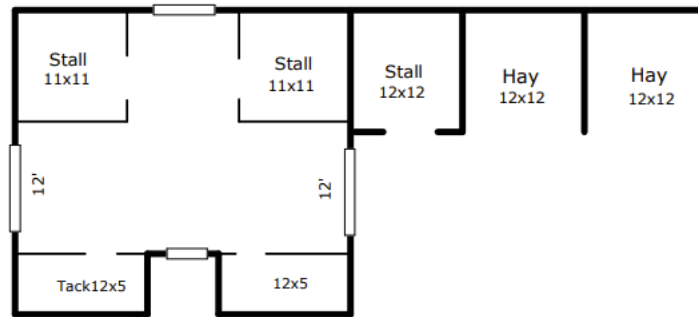
Hay Loft

Feed Room

Covered Patio

Hot & Cold H₂O

36' x 36' Addition (*2019*)



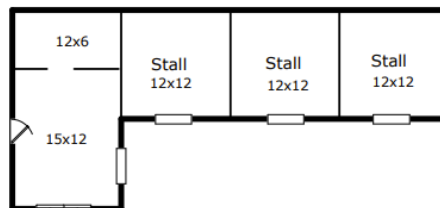
Barn 2

Metal w/Equipment Shed

Feed/Tack Room w/H & A

3 (12' x 12') Stalls

Dutch Doors to Overhang



Property Features

Rolling Pastures

Creek & Trails

2-Car Carport

Garden Tool/Equipment Shed

Income Producing Crops

(8 Acres in Crops, \$1,200+/- Per Year)

*Deferred Taxes Buyer's Responsibility If
Buyer Removes Property from Ag Deferral
Program*

Shop

Built 2019

**(No Permit Record Found)*

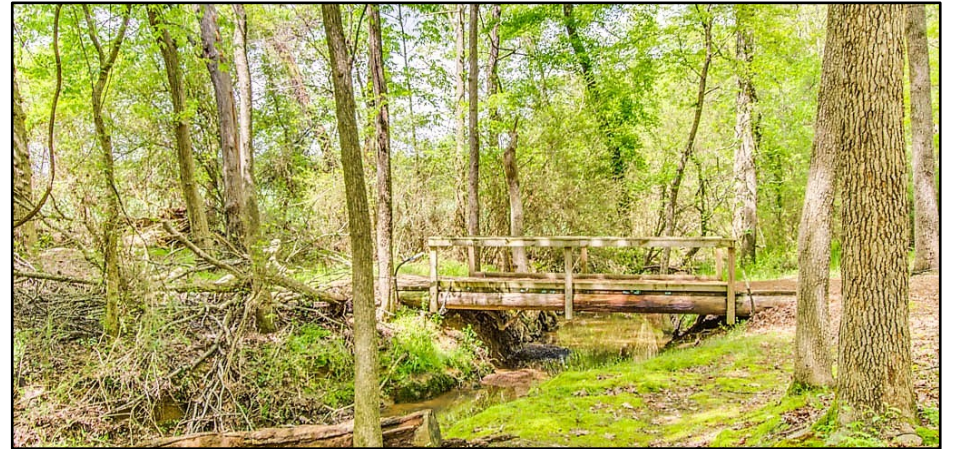
One Side Shop has Heat & Air

Ceiling Fan

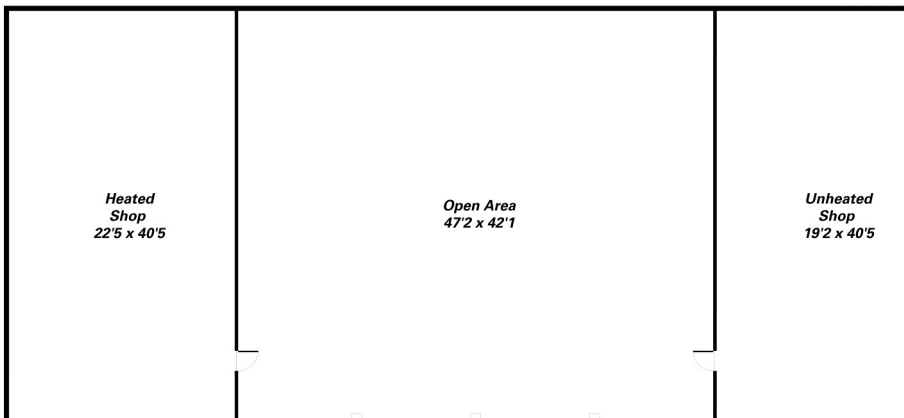
4 Bays for Trailers/Storage

2nd Side Enclosed Storage

Walk-In Doors Each Side



Shop / Equipment / Storage Building



3400 Baucom Manor Road
Monroe, North Carolina 28110

Julie R. Breedlove • 704.661.9619
Julie@breedlovecarolinas.com



Premier

Sotheby's
INTERNATIONAL REALTY

Charlotte Office
532 Governor Morrison Street #C110
Charlotte, NC 28211

Sotheby's International Realty® and the Sotheby's International Realty logo are registered service marks used with permission. Each office is independently owned and operated. Equal Housing Opportunity. If your property is listed with a real estate broker, please disregard. It is not our intention to solicit the offerings of other real estate brokers. We are happy to work with them and cooperate fully. Property information herein is derived from various sources that may include, but not limited to county records and the multiple listing service and it may include approximations. Although this information is believed to be accurate, it is not warranted and should not be relied upon without personal verification.