

Hawthorne Estate: Home and Hay Farm

101 Karrie Way, Hawthorne, Florida 32640

Shea R. Booster
541-771-1177
shea@saundersrealestate.com

Zane Mueller
352-303-9322
zane@saundersrealestate.com

PROPERTY OVERVIEW



Sale Price

\$1,600,000

Offering Summary

Acreage:	80± Acres
City:	Hawthorne
County:	Putnam
Property Type:	Land
Video:	View Here
State:	Florida

Property Overview

Welcome to a stunning 80.13-acre estate in the heart of North Central Florida, offering the perfect blend of country living, farming, and outdoor recreation. This breathtaking property features approximately 40 acres of Turnkey Coastal Bermuda hay fields, complete with multiple hay barns and an enclosed RV barn equipped with full RV hookups.

At the heart of the property is a spacious 4,255 sq. ft. home, built in 2005, featuring four bedrooms and three bathrooms. Designed for comfort and entertainment, the home boasts an expansive paver patio with a hot tub, creating the perfect space to unwind and enjoy the peaceful surroundings. A 500-gallon underground propane tank powers the whole-home generator and the outdoor grill, ensuring convenience and reliability.

For outdoor enthusiasts, this property is a paradise. A stocked bass and bream pond and a catfish-filled canal offer fantastic fishing opportunities right in your backyard. Whether you're looking for a working farm, private retreat, or recreation property, this estate provides endless possibilities.

SPECIFICATIONS & FEATURES

Land Types:	<ul style="list-style-type: none">• Equestrian• Ranch
Uplands / Wetlands:	44± Acres of Uplands / 36± Acres of Wetlands
Soil Types:	Candler Fine Sand Adamsville Sand Millhopper Sand Muck
Taxes & Tax Year:	2024: \$6,813.61
Zoning / FLU:	AG / A2 - Agriculture II
Lake Frontage / Water Features:	Pond (stocked with bass and bream) and Canal (stocked with catfish)
Water Source & Utilities:	Two Wells, One is for the home
Nearest Point of Interest:	Interlachen: 8 Miles Hawthorne: 10 Miles Gainesville: 25 Miles Ocala: 37 Miles Jacksonville: 80 Miles Orlando: 115 Miles
Current Use:	The property is currently a primary residence and a turnkey hay farm
Grass Types:	Coastal Bermuda

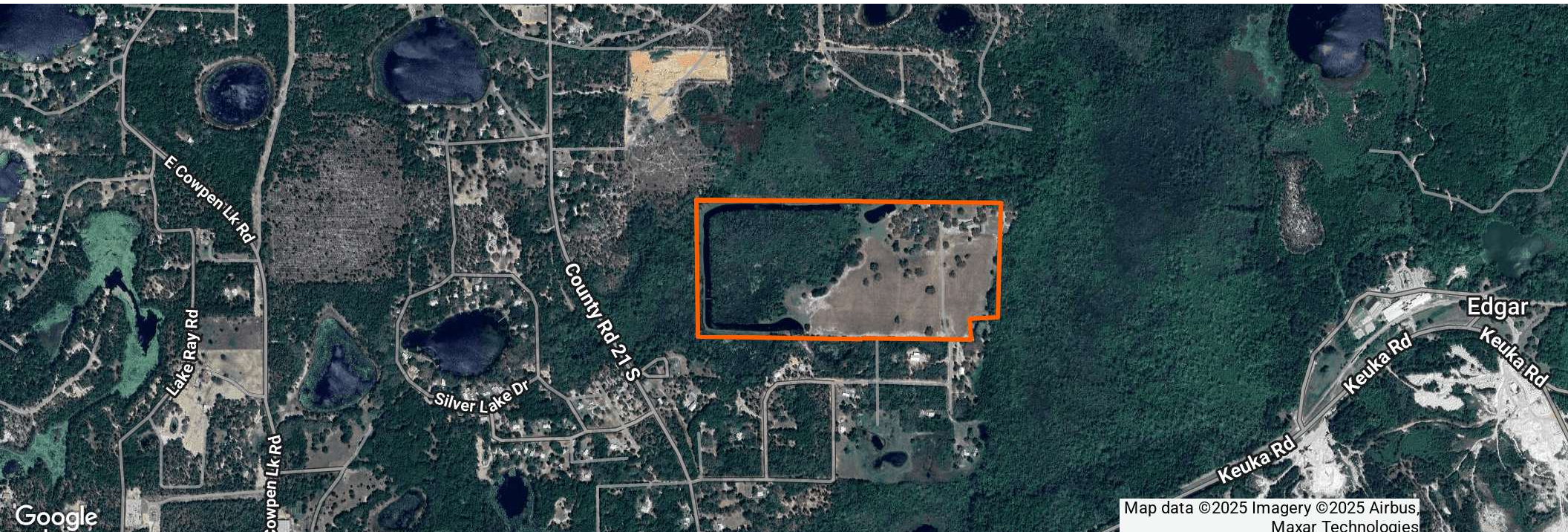


LOCATION



Location & Driving Directions

Parcel:	26-10-23-0000-0100-0000
GPS:	29.5969254, -81.967479
Driving Directions:	Contact listing agents for details
Showing Instructions:	Contact listing agents to set up a showing





HOME EXTERIOR AND GARAGE GAME ROOM



HOME INTERIOR



MASTER BEDROOM



DOWNSTAIRS



UPSTAIRS BEDROOMS AND BATHROOMS



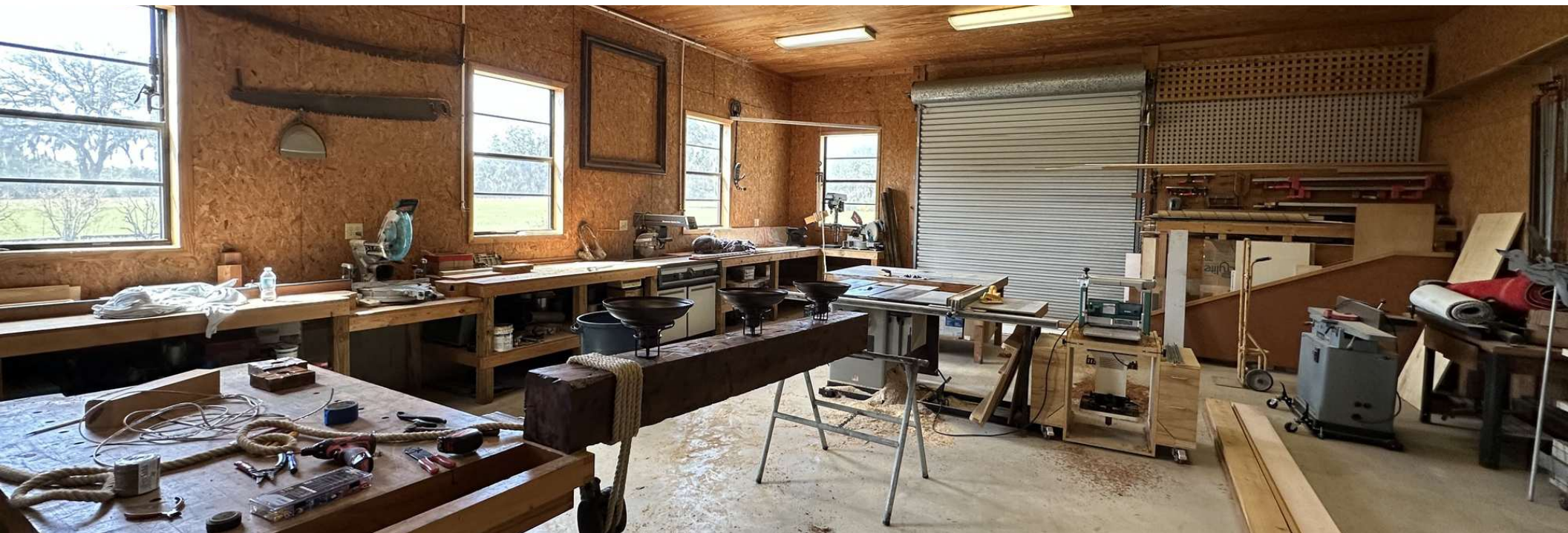


BARN 1



BARN 2





EQUIPMENT INCLUDED WITH SALE



ADDITIONAL PHOTOS





ADVISOR BIOGRAPHIES



Phone: 877-518-5263 x393
Cell: 541-771-1177
shea@saundersrealestate.com
1723 Bartow Road
Lakeland, FL 33801

Shea R. Booster

Advisor
Saunders Real Estate

Shea Booster is an Advisor at Saunders Real Estate.

Shea believes that the quality of a deal is directly related to the quality of relationships he can build with his clients. Plainly speaking, he puts "People First."

Shea holds a Bachelor of Science degree in Agricultural Education and Communication with minors in Leadership and International Studies from the University of Florida. During his time in the "Swamp," Shea was extremely involved on campus. He was President of the University of Florida's Collegiate Farm Bureau Chapter, sat on multiple advisory boards, held various leadership roles in his professional agriculture fraternity, Alpha Gamma Rho, and is a member of Florida Blue Key.

Prior to his time in Florida, Shea served as a National FFA Officer for the National FFA Organization. As the 2018-2019 Western Region National Vice President, Shea traveled over 100,000 miles across the country and internationally, advocating for ranchers, farmers, and agriculturalists at conventions, in boardrooms, and in the U.S. Capitol. His time in this role led him to Florida.

In addition to his work at Saunders, Shea also owns and operates a leadership development company, People First Leadership Solutions LLC, that provides leadership development training and programming for various companies and universities across the country.



Phone: 877-518-5263 x396
Cell: 352-303-9322
zane@saundersrealestate.com
1511 N. Westshore Blvd
Suite 220
Tampa, FL 33607

Zane Mueller

Advisor & Head of Research
Saunders Real Estate

Zane Mueller, MSRE is a Research Advisor at Saunders Real Estate.

Initially from Floral City, Florida, Zane has spent the entirety of his professional career in the agriculture industry, notably working for crop geneticists, production brokers, and doing academic horticulture research. This hands-on experience, combined with an impressive educational background, allows him to deliver exceptional service and insights to each of his clients.

Zane holds a Bachelor of Science in Food and Resource Economics with a specialization in Agribusiness and Marketing Management, along with a Master of Science in Real Estate (MSRE) from the University of Florida. Upon graduation, Zane began working with Saunders Real Estate as a Market Analyst and later transitioned into an Advisor role, pairing experience in marketing with technical knowledge of Florida's landscape.

Zane's passion for the outdoors in Florida is exuded by his background in the agriculture industry and pastimes on the water. His family has long ties to North Central Florida and the Nature Coast, leading him to specialize in the region he is most passionate about.

Zane specializes in:



SAUNDERS
REAL ESTATE



SAUNDERS
LAND



SAUNDERS
COMMERCIAL

Serving the Southeast

At Saunders Real Estate, we deliver full-service real estate solutions across the Southeast, built on more than 30 years of trusted experience. Our dedicated teams—experts in both land and commercial real estate—offer tailored guidance backed by deep regional insight and a proven track record. We believe that successful outcomes start with strong relationships built on trust and a shared commitment to your goals.



877-518-5263 • info@saundersrealestate.com