

Satilla River Bottom Timberlands

0 Woodrow Lane Nahunta, Nahunta, Georgia 31553

Mike Lansdell, ALC
912-409-0925
mikel@saundersrealestate.com

PROPERTY OVERVIEW



Sale Price

\$2,810,600

Offering Summary

Acreage:	1,081 Acres
Price / Acre:	\$2,600
City:	Nahunta
County:	Brantley
Property Type:	Land, Land Investment, Timberland
Video:	View Here

Property Overview

Immerse yourself in the ultimate outdoor paradise at this remarkable river bottom property in Nahunta, GA. With an impressive 4.8 miles of frontage on the Satilla River, this land is a haven for hunting and fishing enthusiasts. The expansive grounds offer unparalleled opportunities for outdoor recreation, while the surrounding natural beauty creates an ideal setting for a hunting or fishing retreat. Embrace the serenity and abundance of wildlife that this property affords, making it an exceptional investment for those seeking a prime location for outdoor pursuits. Indulge in the thrill of the hunt and the tranquility of the river at this extraordinary river bottom property in Nahunta, GA.



LOCATION



Location & Driving Directions

Parcel:	B039 013
GPS:	31.2687174, -81.9889686
Driving Directions:	Call listing agent
Showing Instructions:	Call listing agent



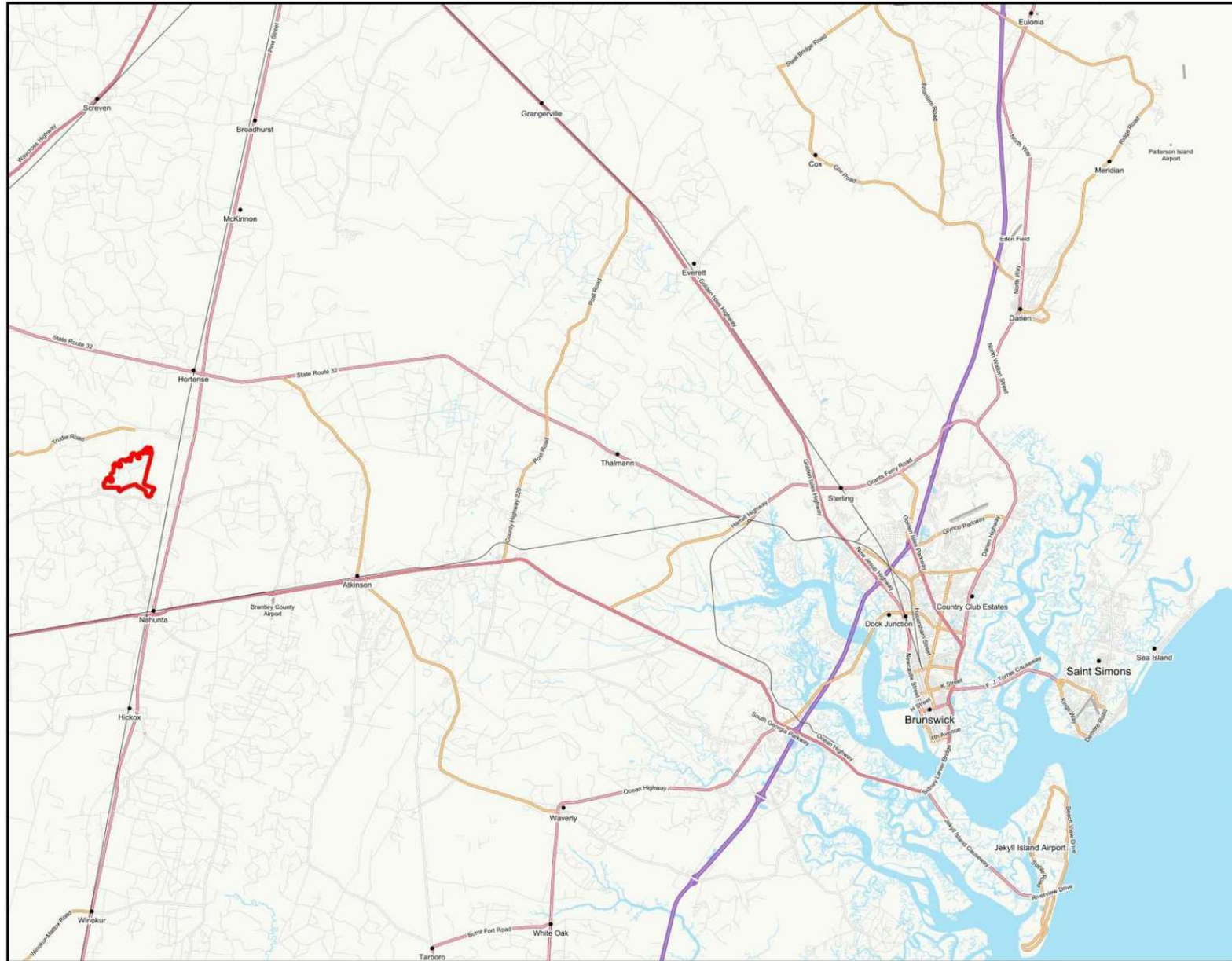
SPECIFICATIONS & FEATURES



Specifications & Features

Uplands / Wetlands:	Wetlands 1,074± acres and Uplands 3± acres
Taxes & Tax Year:	2023 taxes \$4609.92
Zoning / FLU:	Ag
Lake Frontage / Water Features:	4.8 miles of frontage on the Satilla River
Nearest Point of Interest:	Brunswick, St. Simons Island
Current Use:	Hunting Recreation, some timber
Grass Types:	Native
Potential Recreational / Alt Uses:	Hunting, Fishing, Canoe and Kayaking
Land Cover:	Natural hardwood, pine and cypress

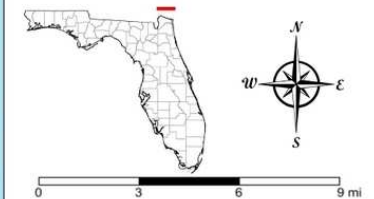
LOCATION MAP



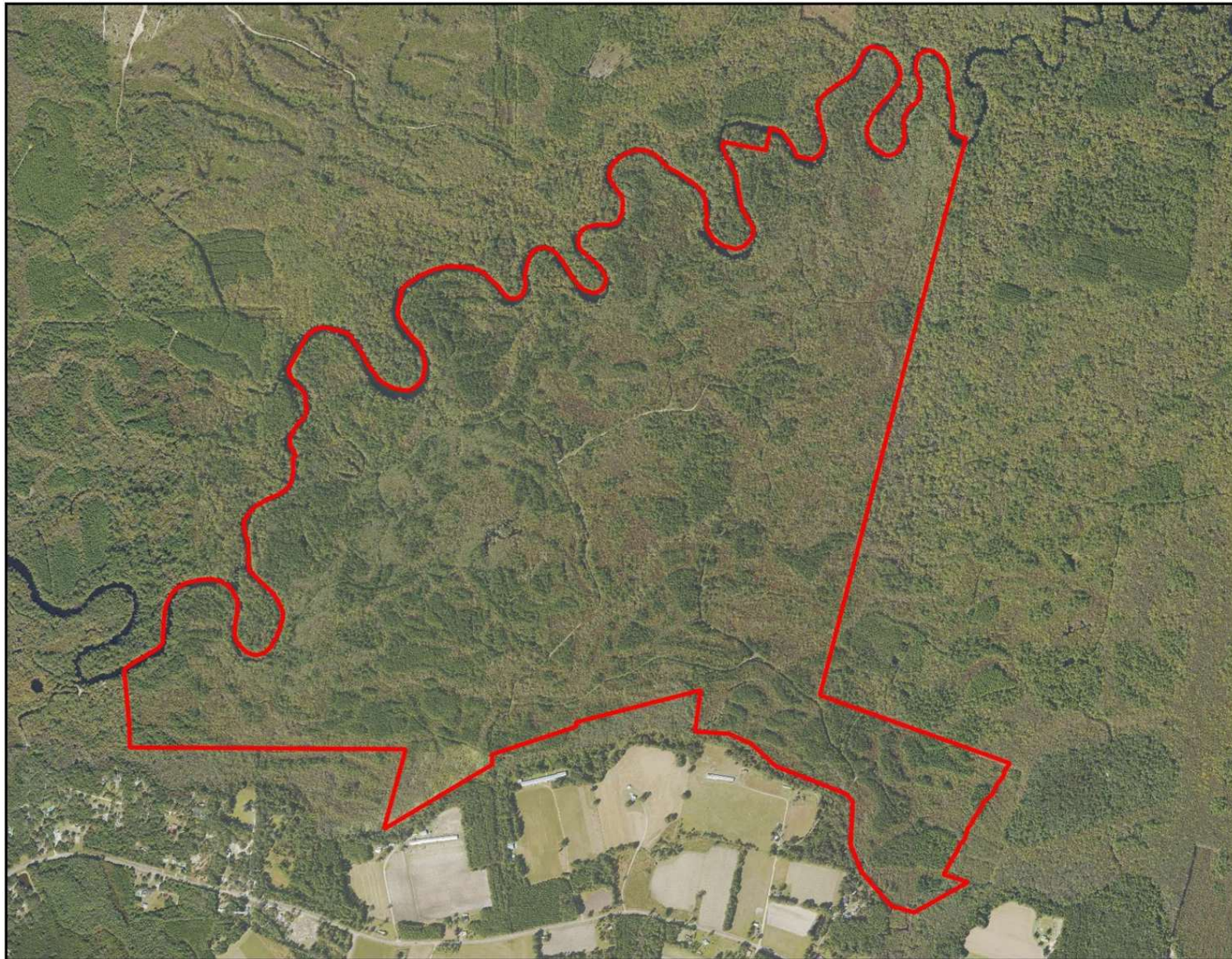
Satilla River Bottom Ranch- Location 1

- County Boundaries
- Polygons Drawing
- Lines Drawing
- Labels Drawing
- Points Drawing

CODE	DESC	ACRES
TOTAL =		1076.64808627639
		acres

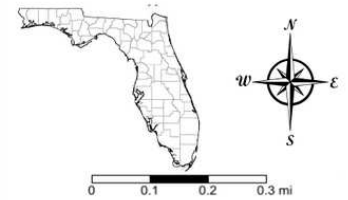


AERIAL MAP

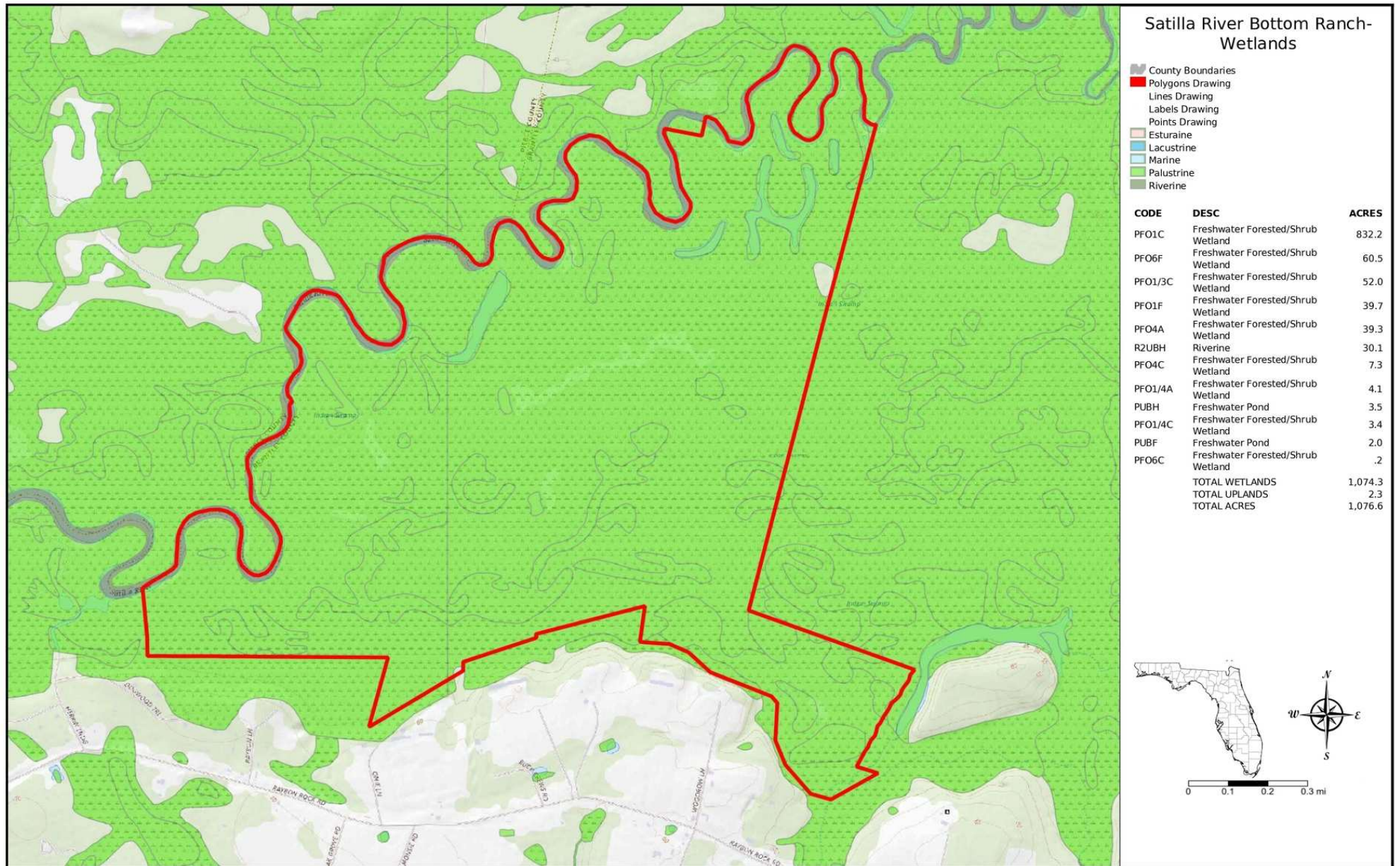


Satilla River Bottom Ranch

- County Boundaries
- Polygons Drawing
- Lines Drawing
- Labels Drawing
- Points Drawing



WETLANDS MAP

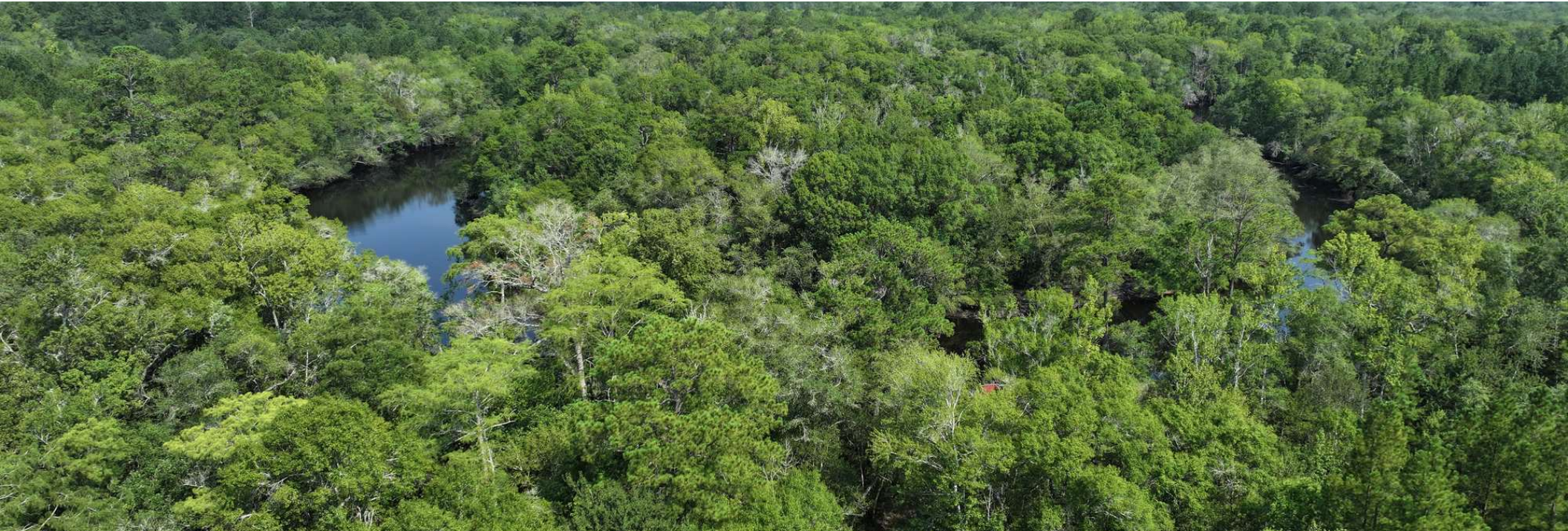




ADDITIONAL PHOTOS



ADDITIONAL PHOTOS



ADVISOR BIOGRAPHY



Mike Lansdell, ALC

Senior Advisor

mikel@saundersrealestate.com

Direct: **877-518-5263 x448** | Cell: **912-409-0925**

Professional Background

Mike Lansdell, ALC is a Senior Advisor at Saunders Real Estate.

Born and raised on a farm in Southern Georgia, Mike has always held a passion for the land industry. After graduating high school, he would attend Abraham Baldwin Agriculture College and then the University of Georgia where he earned his Bachelor of Science degree in Agriculture.

For six years, Mike sold specialty chemicals for companies like the Helena Chemical Company Forestry Division where he grew knowledgeable on all aspects of forestry herbicides and silviculture. Later in his career, he kickstarted his own land management company that provided a wide range of services including timber management, harvesting, and whole tree chipping. For twelve years, Mike was highly involved in the daily buying, selling, and reforestation of timber tracts throughout the southern United States.

His diverse background, agricultural experience, and vast knowledge in forestry led Mike to acquire his real estate license. In 2017, he earned the ALC designation through the Realtors Land Institute. Mike now specializes in timber and recreational land.

Mike's love of the outdoors combined with his career history, offers clients a knowledgeable and professional buying experience in various land transactions.

Mike specializes in:

- Timber
- Agriculture
- Land Management



SAUNDERS
REAL ESTATE



SAUNDERS
LAND



SAUNDERS
COMMERCIAL

Serving the Southeast

At Saunders Real Estate, we deliver full-service real estate solutions across the Southeast, built on more than 30 years of trusted experience. Our dedicated teams—experts in both land and commercial real estate—offer tailored guidance backed by deep regional insight and a proven track record. We believe that successful outcomes start with strong relationships built on trust and a shared commitment to your goals.



877-518-5263 • info@saundersrealestate.com