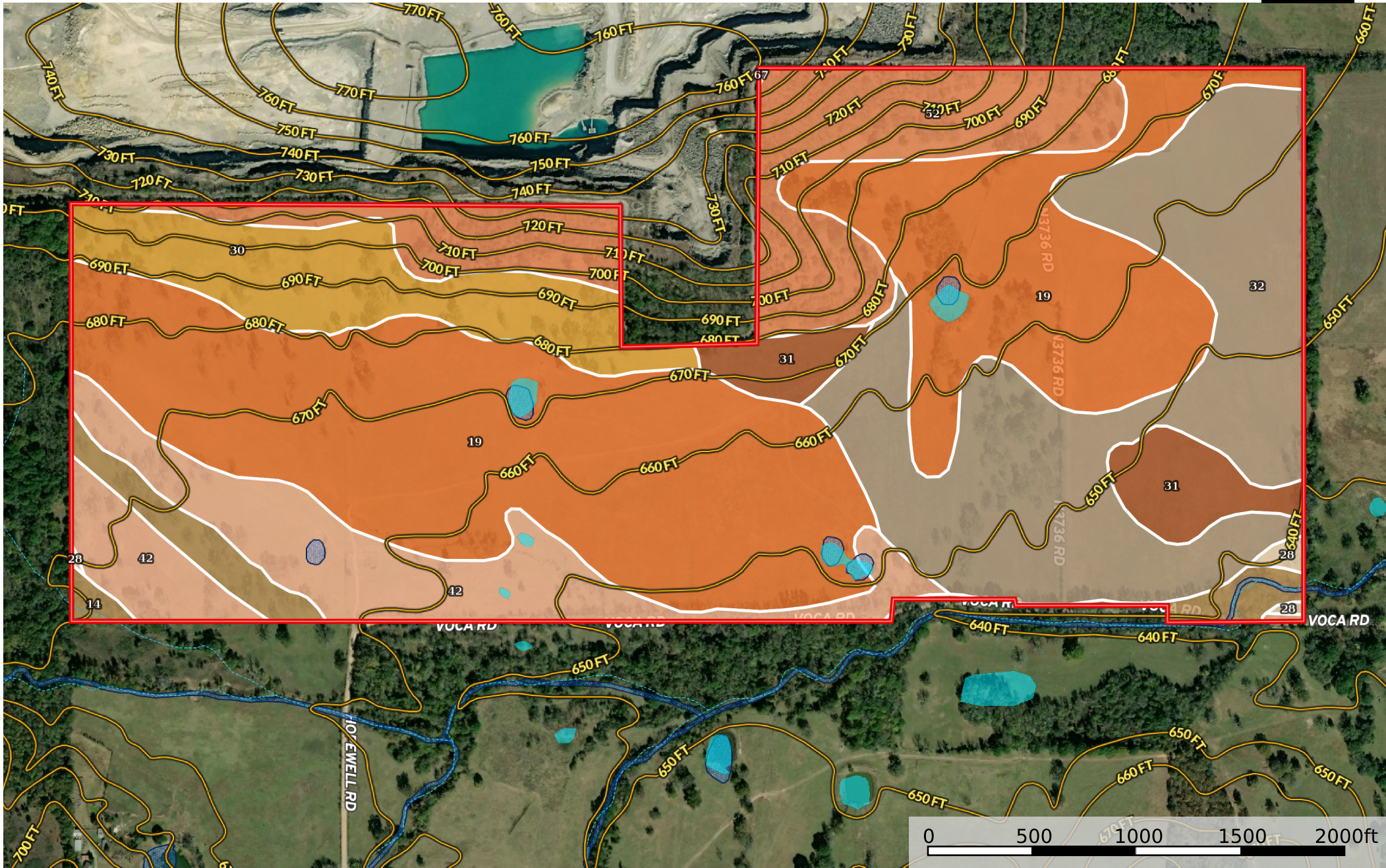


Atoka 297

Atoka County, Oklahoma, 297 AC +/-



- Boundary
- Wetlands
- Riparian
- Stream, Intermittent
- River/Creek
- Water Body

Richard Senn

P: 918-600-7509

<https://richardsenn.fathomrealty.com/index.php>



The information contained herein was obtained from sources deemed to be reliable. MapRight Services makes no warranties or guarantees as to the completeness or accuracy thereof.

Boundary 295.74 ac

SOIL CODE	SOIL DESCRIPTION	ACRES	%	CPI	NCCPI	CAP
19	Burleson clay, 1 to 3 percent slopes	120.36	40.7	0	44	3e
32	Durant loam, 1 to 3 percent slopes	62.33	21.08	0	53	3s
52	Kiti-Rock outcrop complex, 1 to 12 percent slopes	35.83	12.12	0	8	6e
42	Guyton silt loam, 0 to 1 percent slopes, occasionally flooded	32.44	10.97	0	43	4w
30	Dennis loam, 3 to 5 percent slopes, eroded	23.46	7.93	0	60	3e
31	Dennis and Eram soils, 3 to 8 percent slopes, severely eroded	11.14	3.77	0	50	6e
14	Boggy fine sandy loam, 0 to 1 percent slopes, frequently flooded	9.25	3.13	0	38	5w
28	Dela fine sandy loam, 0 to 1 percent slopes, occasionally flooded	0.89	0.3	0	69	5w
67	Pits	0.04	0.01	0	-	8
TOTALS		295.74(*)	100%	-	42.8	3.66

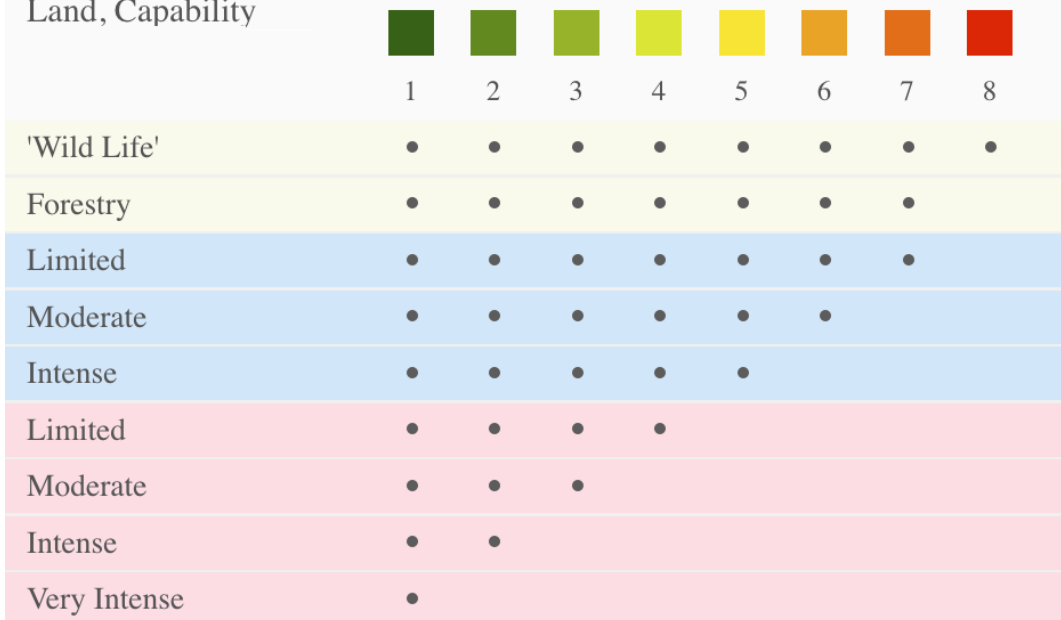
(*) Total acres may differ in the second decimal compared to the sum of each acreage soil. This is due to a round error because we only show the acres of each soil with two decimal.

Capability Legend

Increased Limitations and Hazards

Decreased Adaptability and Freedom of Choice Users

Land, Capability



Grazing Cultivation

(c) climatic limitations (e) susceptibility to erosion

(s) soil limitations within the rooting zone (w) excess of water