



Longleaf Lodge and Lake



720 Acres
Baldwin County, Alabama

Longleaf Lodge and Lake

720 Acres

Baldwin County, Alabama

LOCATION: Southwest Alabama: Bay Minette is 33 miles to the south. Mobile, AL is 55 miles to the south. Pensacola, FL is 77 miles to the south.

DESCRIPTION: One of the first settled areas in South Alabama was the Tensaw Region and large land tracts rarely become available in this area. The Longleaf Lodge and Lake Tract is one of these rare opportunities. This tract has a 4 bedroom 4 bath lodge overlooking a 3 acre lake. It has a cooking pavilion and enclosed skinning shed near the house. There is also a 3 bedroom 2 bath cabin that could be used as a guest cabin or caretakers home. There are 320 acres of longleaf and loblolly planted pines that are 32 years old and 54 acres of 8 year old planted longleaf. The remainder of the timber is in mature old growth hardwoods and longleaf pines and seeded longleaf areas. There is a road system that allows for easy travel across the entire tract and accesses the 10 food plots established on this property. The Longleaf Lodge and Lake has everything an avid outdoorsman could want or need.

ACCESS: From Exit 34 on Interstate 65 take Alabama Highway 59 north for 24 miles and turn right onto Scranage Road. The Longleaf Lodge and Lake access road will be on the right in 3 miles.

Price:\$2,500,00.00

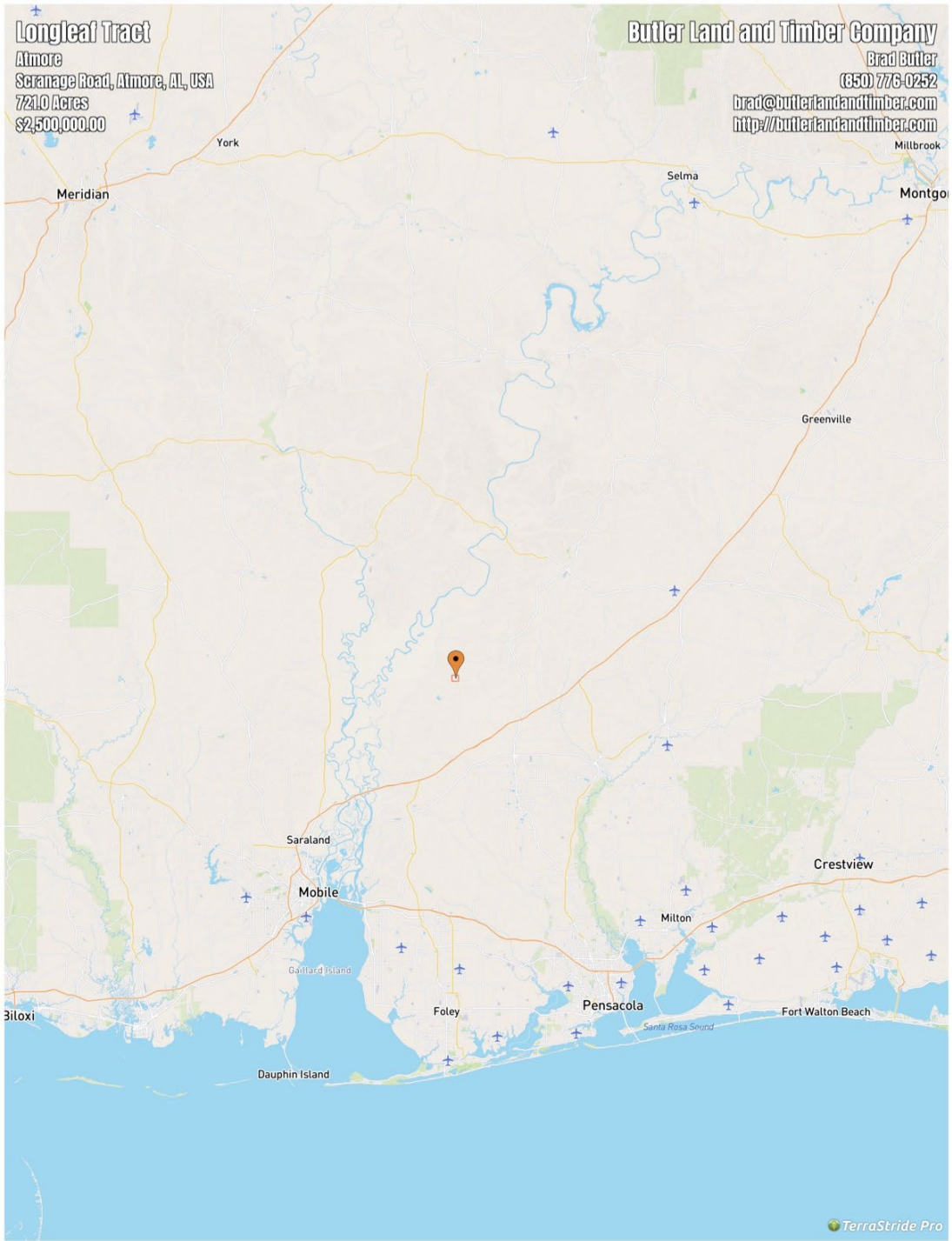
Contact Information:

F. Bradford Butler

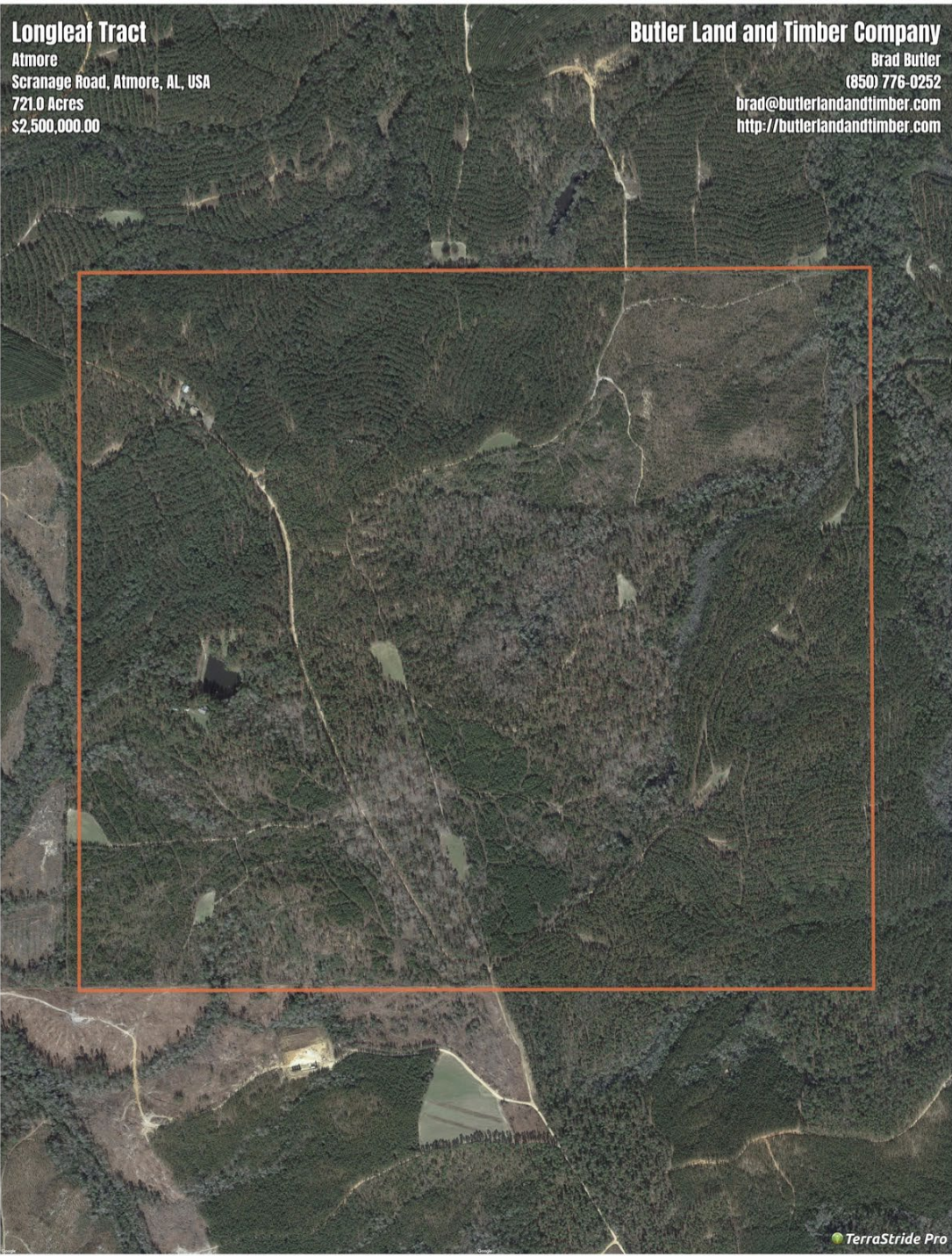
800-704-0645

brad@butlerlandandtimber.com

LOCATION



AERIAL



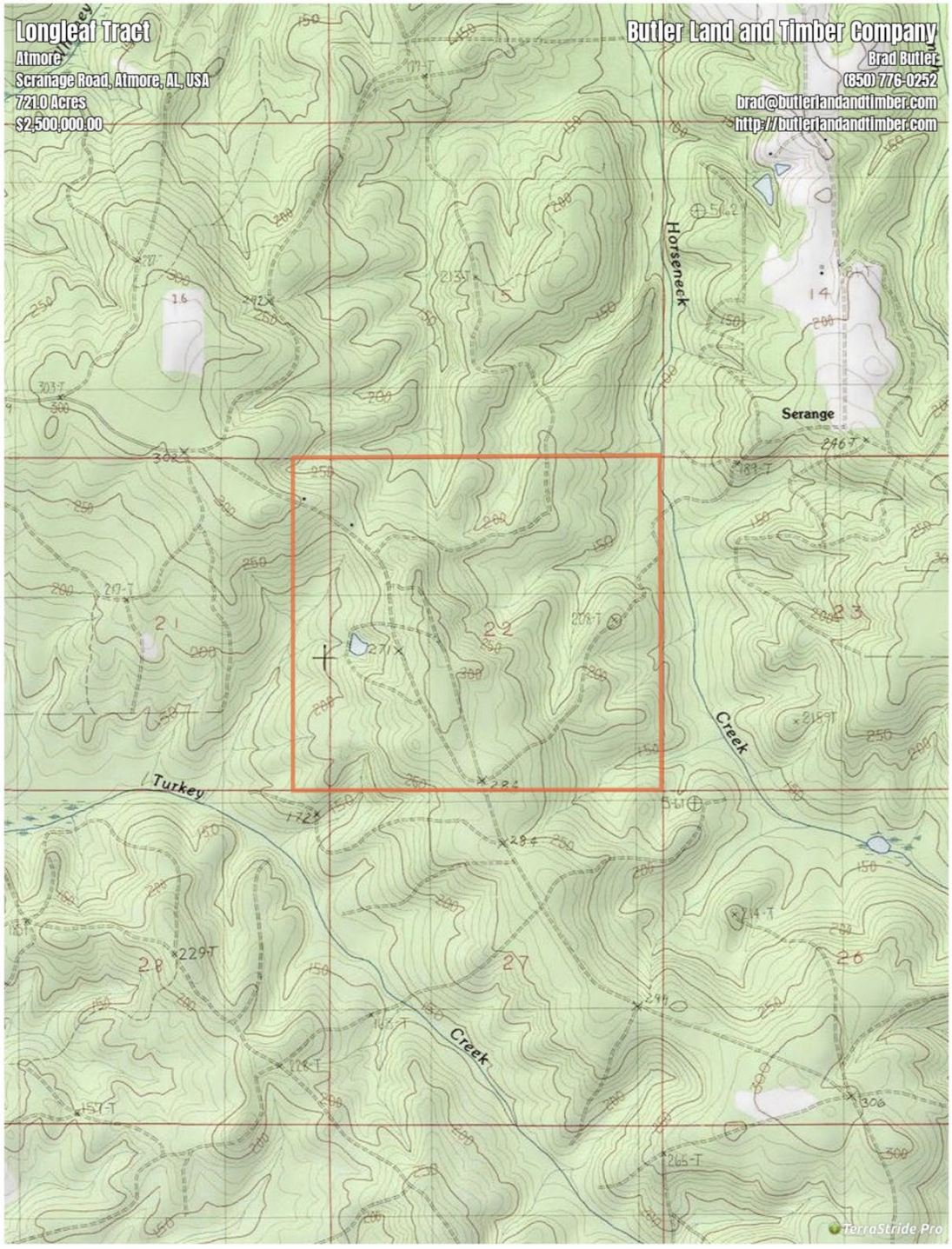
TOPOGRAPHY

Longleaf Tract

Atmore
Scrannage Road, Atmore, AL, USA
721.0 Acres
\$2,500,000.00

Butler Land and Timber Company

Brad Butler
(850) 776-0252
brad@butlerlandandtimber.com
<http://butlerlandandtimber.com>





Listing Broker

F. Bradford Butler

850-776-0252

brad@butlerlandandtimber.com