



**Sartain's Heritage**  
Properties, LLC.  
www.SartainsHeritage.com

# Flat Scooba 42.71 Acres +/- Kemper County, MS



**CONTACT:**  
**J. PARKER SARTAIN**  
601.506.2398  
psartain@sartainsheritage.com

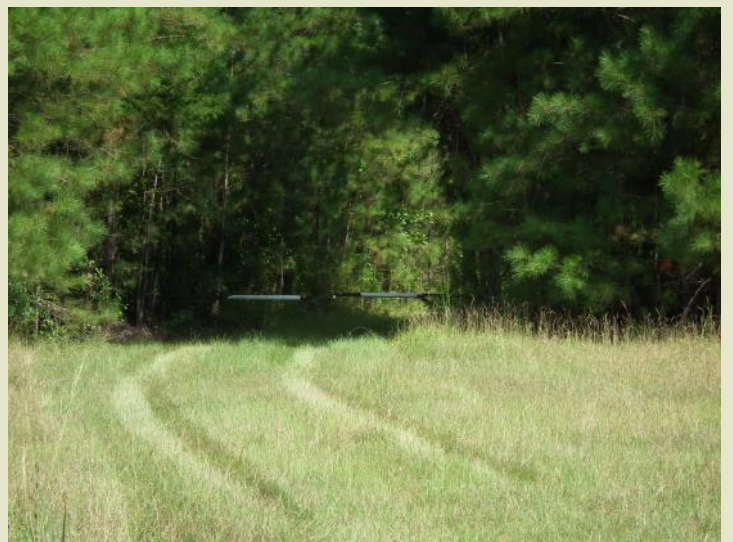
Sartain's Heritage Properties  
106 First Choice Drive  
Madison, MS 39110  
Phone: 601-856-2720  
Fax: 601-853-6765  
www.SartainsHeritage.com

42.71 acres in S12, T11N, R17E, Kemper County, MS. Located just west of Scooba and 2 miles west of Highway 45, with approximately 2700 feet of frontage along the north side Highway 16.

The timber consists of twenty five acres of eleven year one plantation and five acres of hardwoods along Flat Scooba Creek.

Utilities are available along the highway frontage making this an excellent location for an acreage homesite with hunting opportunities.

**\$2000.00 per acre/ \$85,420.00**



All information contained herein is supplied by sources deemed reliable, but is not guaranteed by Sartain's Heritage Properties, its Brokers or Agents. Properties are subject to errors, omissions, correction, price change, prior sale or withdrawal without notice.