

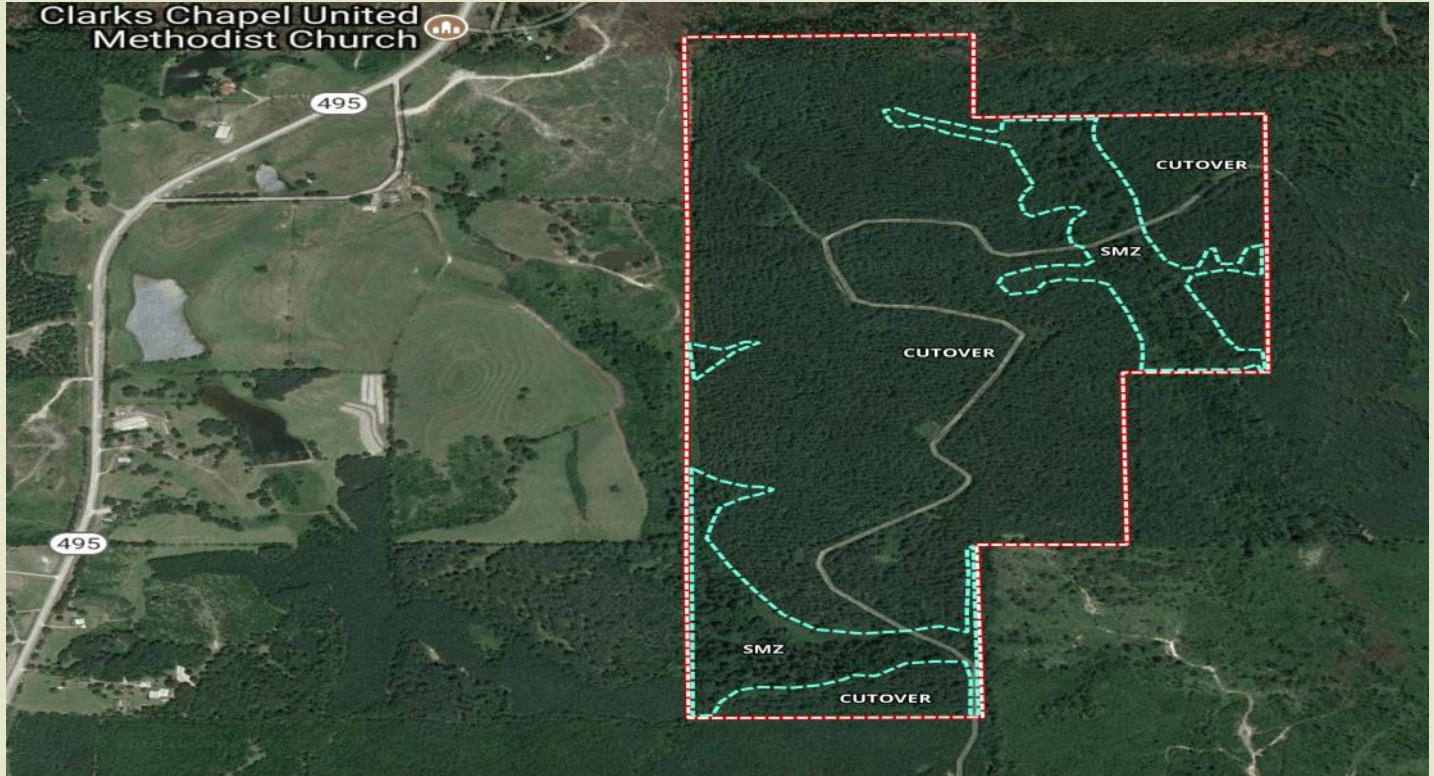


Sartain's Heritage
Properties, LLC.
www.SartainsHeritage.com

Chickasaway Creek

237 Acres +/-

Kemper County, MS



CONTACT:
J. PARKER SARTAIN
601.506.2398
psartain@sartainsheritage.com

Sartain's Heritage Properties
106 First Choice Drive
Madison, MS 39110
Phone: 601-856-2720
Fax: 601-853-6765
www.SartainsHeritage.com

Chickasaway Creek

237 +/- acres located just east of Hwy. 495 in Kemper County, MS. The tract consists of 185 acres of two year replanted pine, 46 acres of hardwood Stream-side Management Zones (SMZ) and 2 acres of merchantable pine timber. The property is traversed by Chickasaway Creek, a year-round running stream, across the northeast portion. Access and utilities will require obtaining an easement from an adjoiner. Access and utilities will require obtaining an easement from an adjoiner. Kemper County offers good deer and turkey hunting opportunities.

\$1200.00 per acre/ \$284,904.00



All information contained herein is supplied by sources deemed reliable, but is not guaranteed by Sartain's Heritage Properties, its Brokers or Agents. Properties are subject to errors, omissions, correction, price change, prior sale or withdrawal without notice.