

SALE

15± ACRE DEVELOPMENT SITE

4090 Arkwright Road, Macon, Bibb County, GA 31210



SALES PRICE: \$550,000

LOCATION OVERVIEW

- Located in North Macon with frontage on Arkwright Road and Sheraton Drive
- Between two vibrant interstate interchanges (Arkwright Road & Riverside Drive)
- Convenient to shopping, restaurants, hotels and financial institutions
- 6 miles from Downtown Macon

PROPERTY OVERVIEW

- 15± Acre Development Site
- Frontage on Arkwright Road and Sheraton Drive
- Subject site identified as Parcel N041-0002
- Zoned C-2
- All public utilities available to the property
- 2024 Property Tax Bill: \$6,079.24

HAL HARPER, CCIM

478.951.3991 Cell

hharper@cbcgeorgia.com

990 RIVERSIDE DRIVE • MACON, GA 31201 • 478.746.8171 • CBCMACON.COM



**COLDWELL BANKER
COMMERCIAL**

EBERHARDT & BARRY

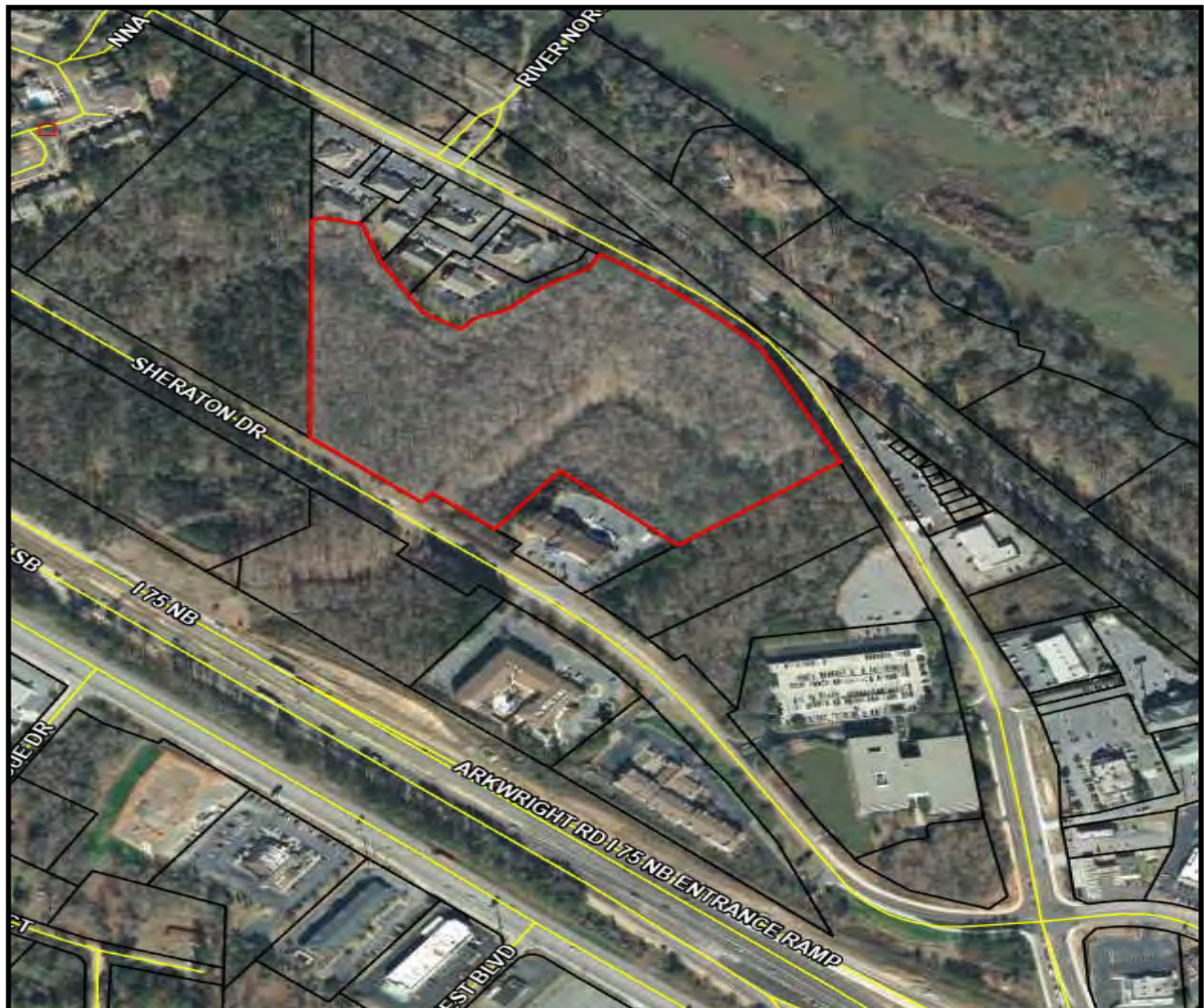
Revised 1/2/25

SALE

15± ACRE DEVELOPMENT SITE

4090 Arkwright Road, Macon, Bibb County, GA 31210

PARCEL MAP



HAL HARPER, CCIM
478.951.3991 Cell
hharper@cbcgeorgia.com

2



COLDWELL BANKER
COMMERCIAL
EBERHARDT & BARRY

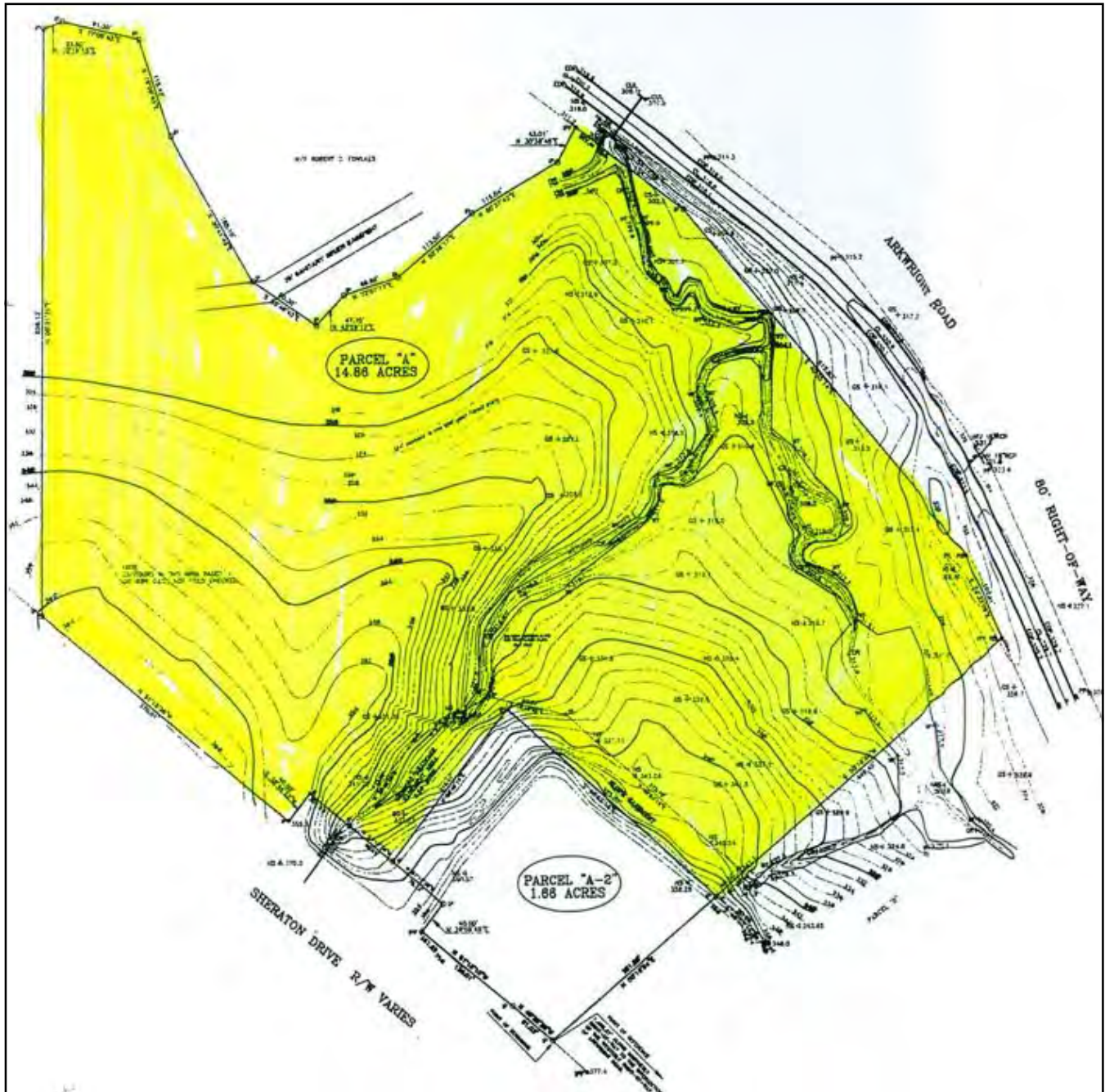
990 RIVERSIDE DRIVE • MACON, GA 31201 • 478.746.8171 • CBCMACON.COM

SALE

15± ACRE DEVELOPMENT SITE

4090 Arkwright Road, Macon, Bibb County, GA 31210

SURVEY



SALE

15± ACRE DEVELOPMENT SITE

4090 Arkwright Road, Macon, Bibb County, GA 31210

GIS MAP



8" WATER MAIN WITH A POSSIBLE 6" STUB ON LOCATION

HAL HARPER, CCIM
478.951.3991 Cell
hharper@cbcgeorgia.com

4



**COLDWELL BANKER
COMMERCIAL**
EBERHARDT & BARRY

990 RIVERSIDE DRIVE • MACON, GA 31201 • 478.746.8171 • CBCMACON.COM

SALE

15± ACRE DEVELOPMENT SITE

4090 Arkwright Road, Macon, Bibb County, GA 31210

GIS MAP



8" WATER MAIN WITH A POSSIBLE 6" STUB ON LOCATION

HAL HARPER, CCIM
478.951.3991 Cell
hharper@cbcgeorgia.com

5



**COLDWELL BANKER
COMMERCIAL**
EBERHARDT & BARRY

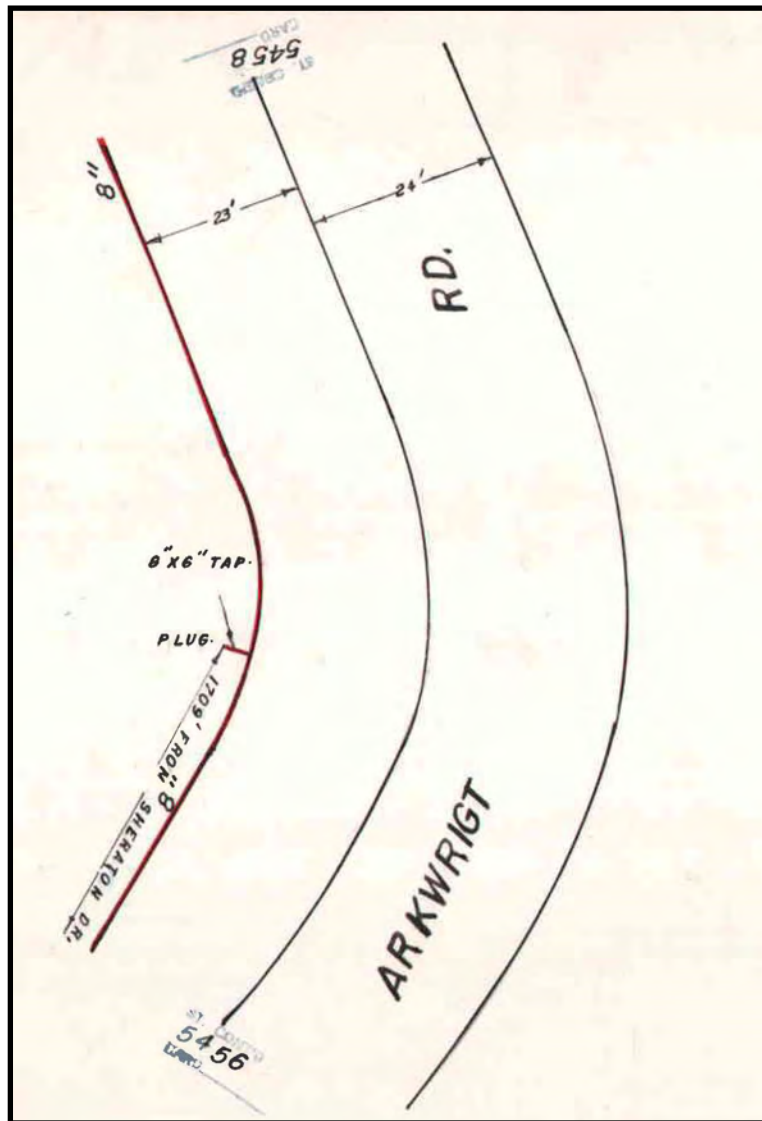
990 RIVERSIDE DRIVE • MACON, GA 31201 • 478.746.8171 • CBCMACON.COM

SALE

15± ACRE DEVELOPMENT SITE

4090 Arkwright Road, Macon, Bibb County, GA 31210

SEWER MAP



SALE

15± ACRE DEVELOPMENT SITE

4090 Arkwright Road, Macon, Bibb County, GA 31210



HAL HARPER, CCIM
478.951.3991 Cell
hharper@cbcgeorgia.com

7



**COLDWELL BANKER
COMMERCIAL**
EBERHARDT & BARRY

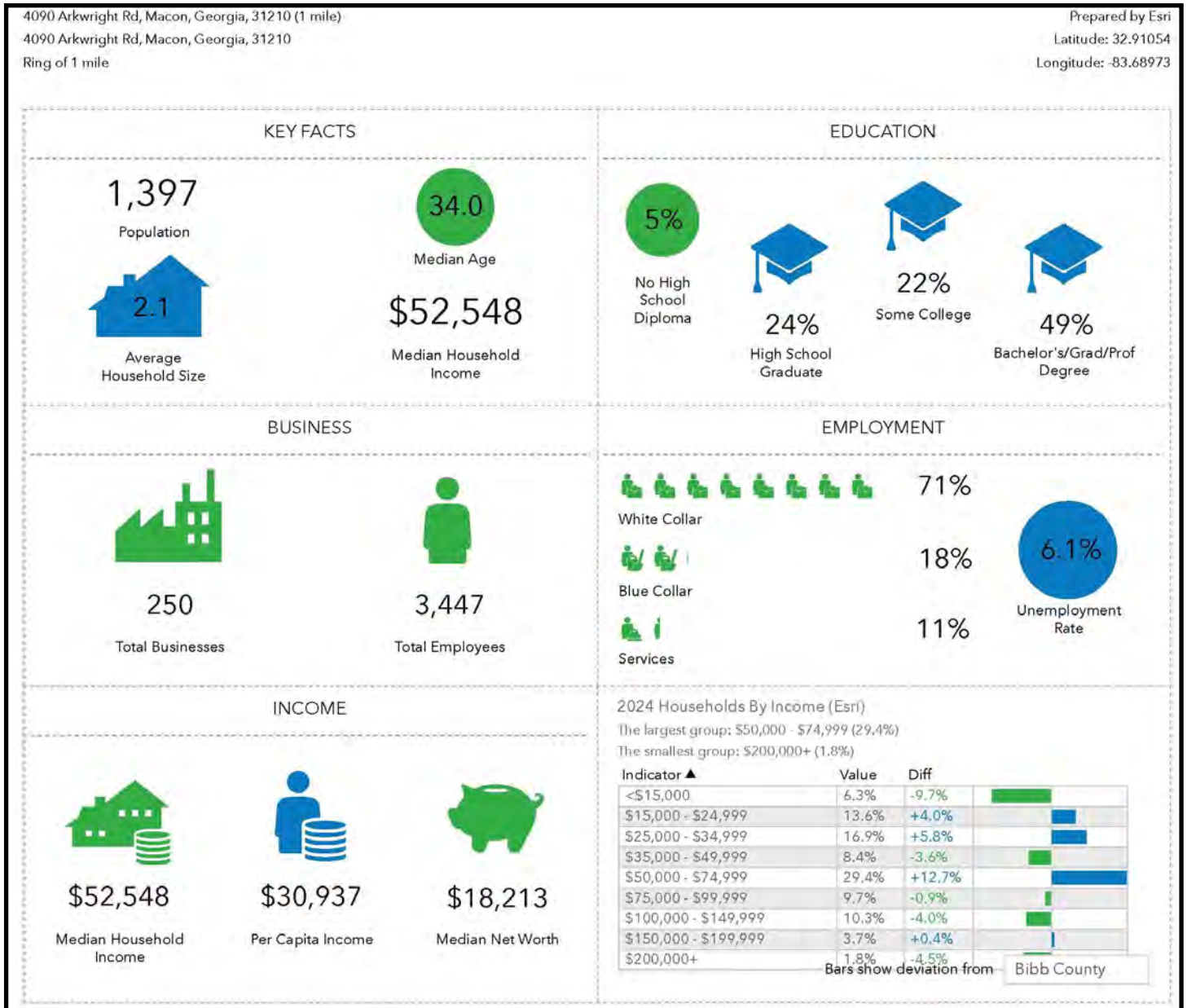
990 RIVERSIDE DRIVE • MACON, GA 31201 • 478.746.8171 • CBCMACON.COM

SALE

15± ACRE DEVELOPMENT SITE

4090 Arkwright Road, Macon, Bibb County, GA 31210

DEMOGRAPHICS - ONE MILE



HAL HARPER, CCIM
478.951.3991 Cell
hharper@cbcgeorgia.com



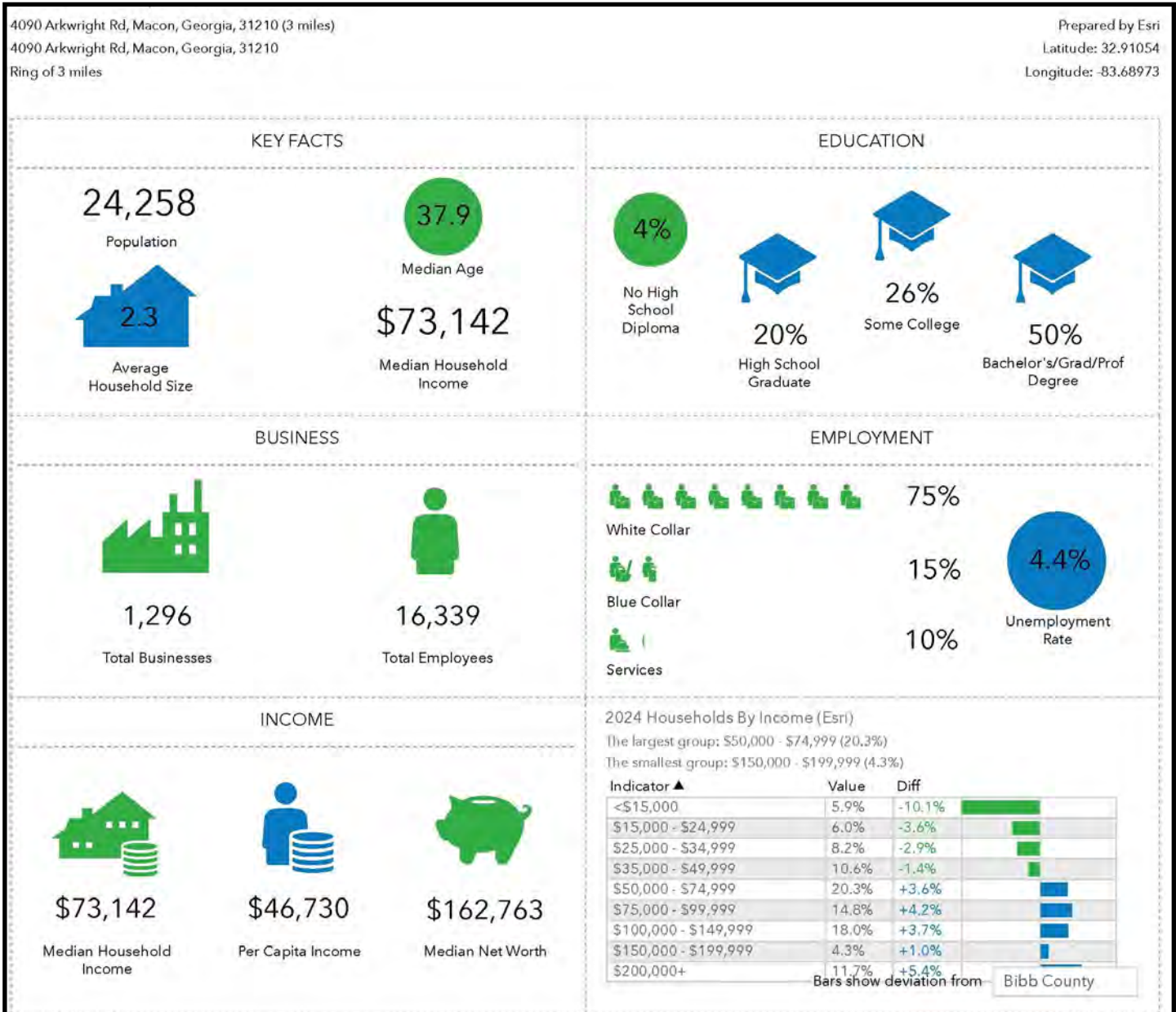
COLDWELL BANKER
COMMERCIAL
EBERHARDT & BARRY

SALE

15± ACRE DEVELOPMENT SITE

4090 Arkwright Road, Macon, Bibb County, GA 31210

DEMOGRAPHICS - THREE MILE



HAL HARPER, CCIM
478.951.3991 Cell
hharper@cbcgeorgia.com



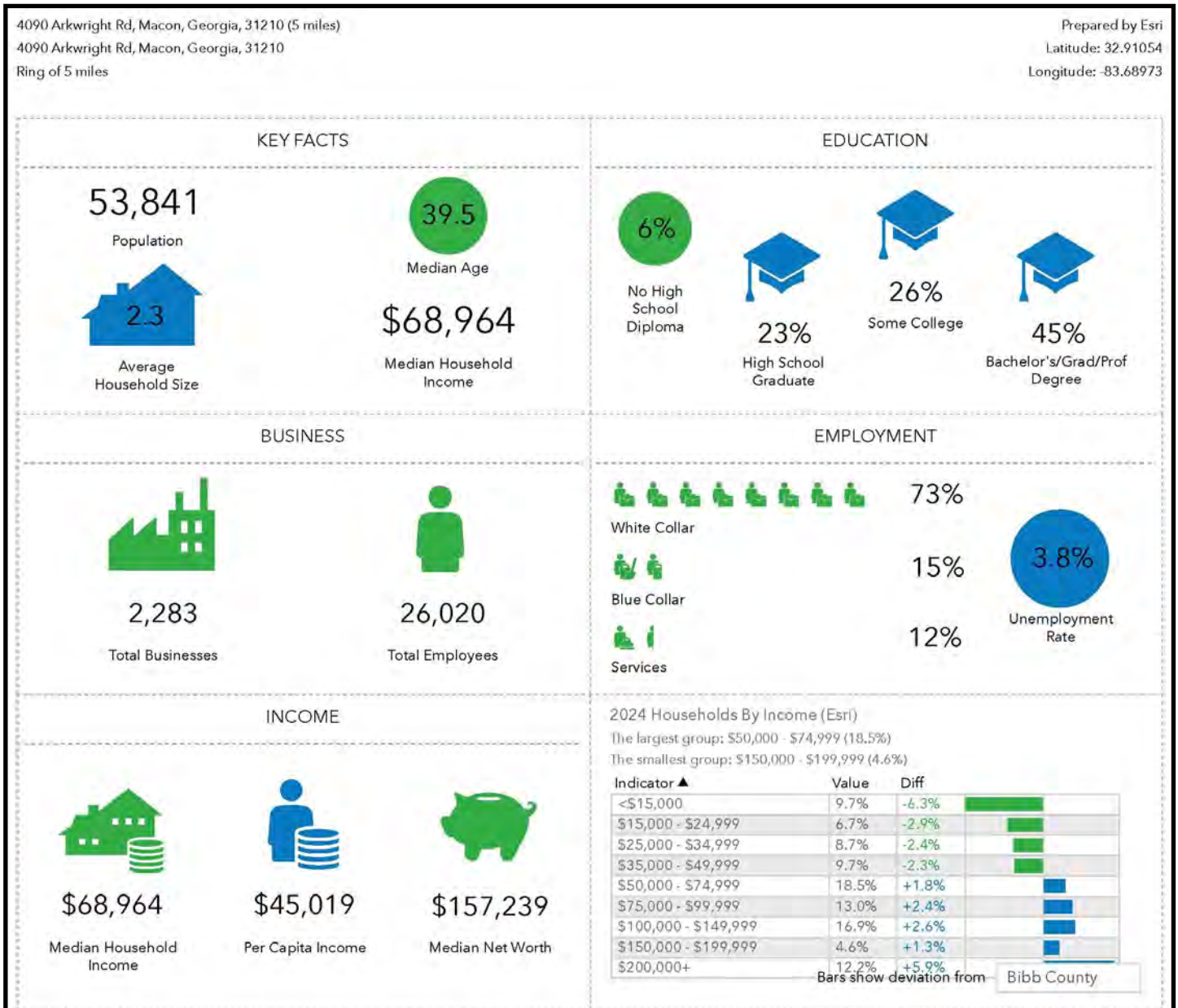
COLDWELL BANKER
COMMERCIAL
EBERHARDT & BARRY

SALE

15± ACRE DEVELOPMENT SITE

4090 Arkwright Road, Macon, Bibb County, GA 31210

DEMOGRAPHICS - FIVE MILE



HAL HARPER, CCIM
478.951.3991 Cell
hharper@cbcgeorgia.com

10



COLDWELL BANKER
COMMERCIAL
EBERHARDT & BARRY

990 RIVERSIDE DRIVE • MACON, GA 31201 • 478.746.8171 • CBCMACON.COM