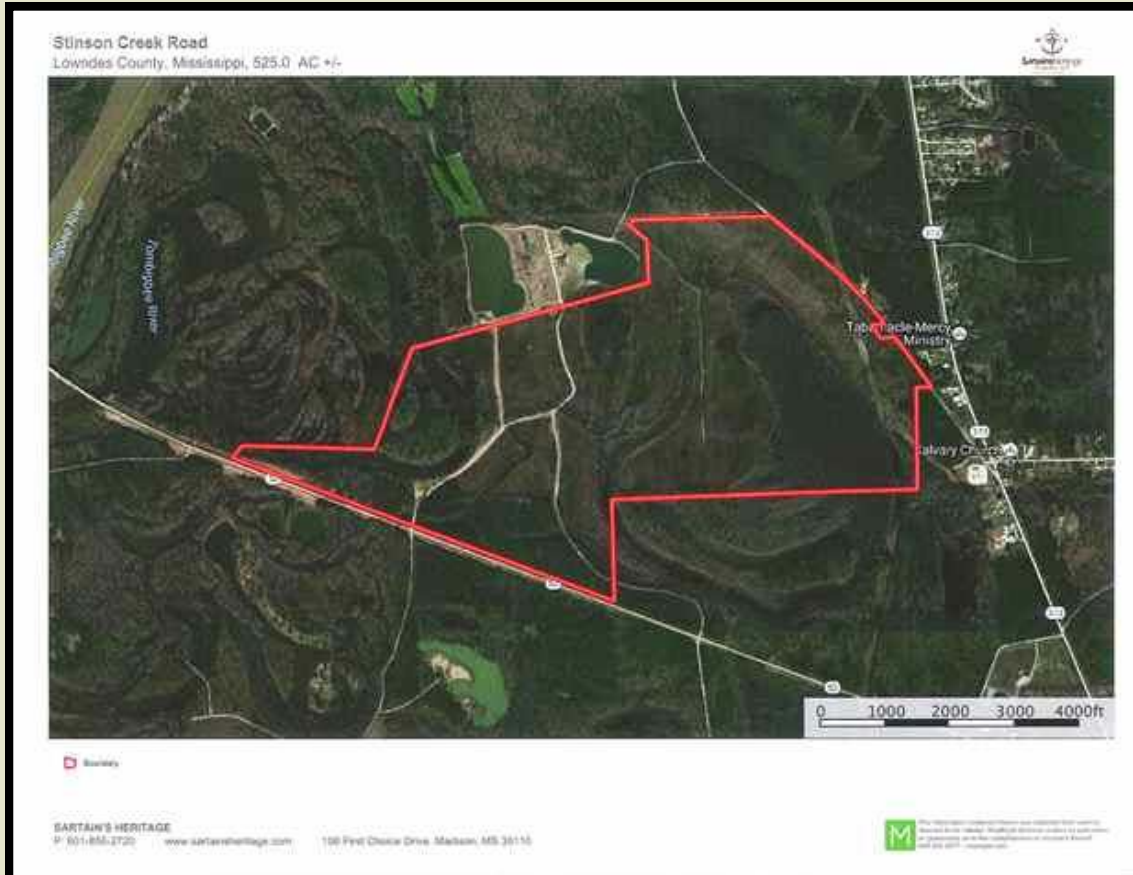




Sartain's Heritage
Properties, LLC.
www.SartainsHeritage.com

STINSON CREEK

508.21 acres +/-
Lowndes County, MS



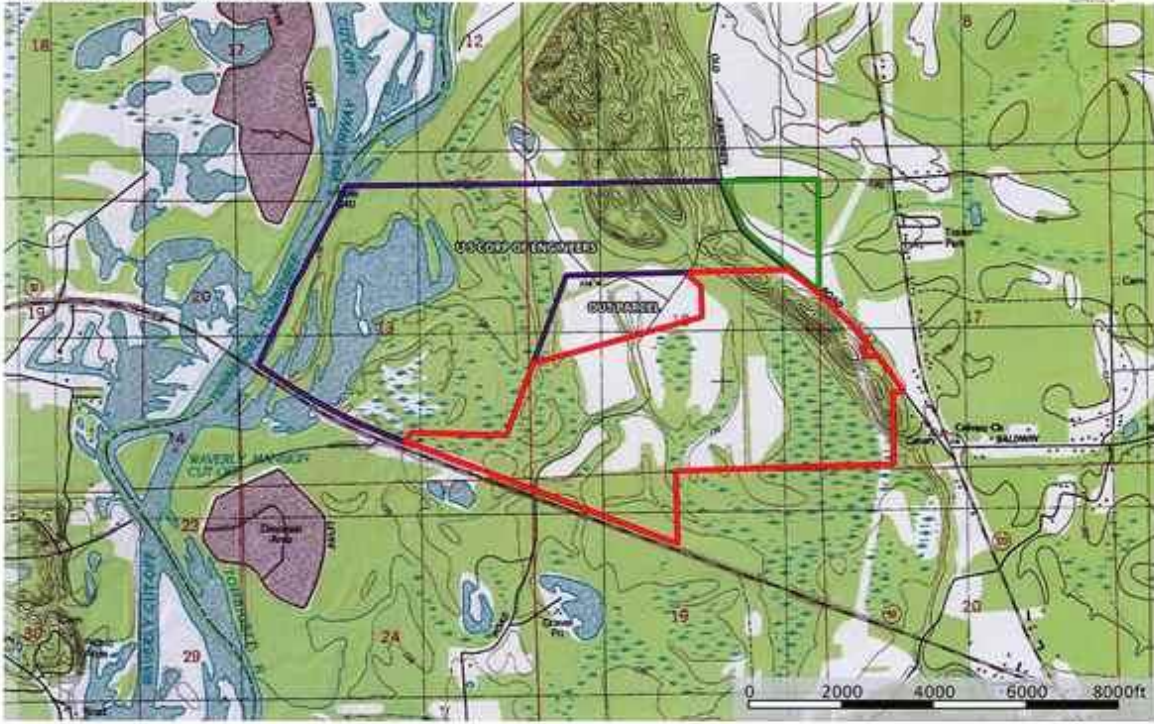
CONTACT:
J. PARKER SARTAIN
601.506.2398
psartain@sartainsheritage.com

Sartain's Heritage Properties
106 First Choice Drive
Madison, MS 39110
Phone: 601-856-2720
Fax: 601-853-6765
www.SartainsHeritage.com

508.21 +/- acres in Sections 13, 18 and 19, T17S, R18W, Lowndes County, Mississippi, east of the Tennessee Tombigbee Waterway and three miles north of Columbus. The property fronts Hwy. 50 on the south and Stinson Creek Road on the east. This is a great recreational property for deer and duck hunting adjoining Corp. of Engineers land on the west boundary of the tract. Cypress and Tupelo Gum sloughs are scattered about the property along with eight year pine plantation and old age pine timber along Highway 50 frontage. Good interior road system with power and water available. Don't miss this opportunity to own this recreational tract near Columbus and the Tenn/Tom.

\$1850 per acre/ \$940,191.83

Stinson Creek Road
Lowndes County, Mississippi, 525.0 AC +/-



SARTAIN'S HERITAGE
#1 601-856-2725 www.sartainsheritage.com 106 First Choice Drive, Madison, MS 39110

M The information presented herein was prepared from sources believed to be reliable. Sartain's Heritage Properties, its Brokers or Agents do not warrant the accuracy or completeness of the information presented or its use for any purpose other than that intended.



All information contained herein is supplied by sources deemed reliable, but is not guaranteed by Sartain's Heritage Properties, its Brokers or Agents. Properties are subject to errors, omissions, correction, price change, prior sale or withdrawal without notice.